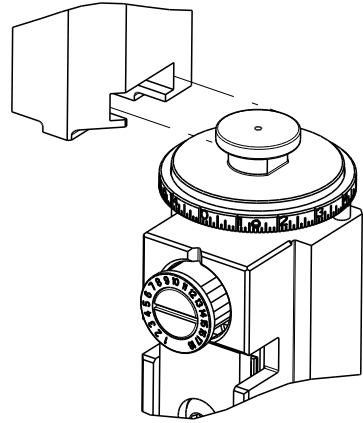


8		7	
THIS DRAWING IS UNPUBLISHED.		RELEASED FOR PUBLICATION	
20		20	
© COPYRIGHT 20 BY TYCO ELECTRONICS CORPORATION. ALL RIGHTS RESERVED.			
PART NUMBER	REVISION	DESCRIPTION	FEED TYPE
2150885-2	C	FINE CRIMP HEIGHT ADJUST	PNEUMATIC
7-2150885-2	C	PNEUMATIC AND CRIMP TOOLING KIT	PNEUMATIC
7-2150885-7	A	CRIMP TOOLING KIT	-

ATLANTIC VERSION TERMINATOR
INTERFACE ADAPTER



APPLICATOR DATA		
CRIMP	SIZE	TYPE
WIRE	6.30 mm [.248]	F
INSUL	8.10 mm [.319]	F
APPL INSTRUCTIONS 408-35043		

TERMINAL DATA: YAZAKI TERMINAL YAZAKI CRIMP SPECIFICATION			
TERMINAL NAME: RING			
WIRE STRIP LENGTH 8.00-9.00 mm [.315-.354 IN]		INSULATION DIAMETER RANGE Ø4.40-6.30 mm [.173-.248 IN]	
TERMINAL APPLICATION SPECIFICATION	72-WT02-047 Rev 2/12/2018 -	-	-
TERMINALS APPLIED			
TE TERMINAL 3311087-1	YAZAKI TERMINAL 7009-1342	TE TERMINAL	YAZAKI TERMINAL

WIRE SIZE		CRIMP HEIGHT mm [INCH]		CRIMP HEIGHT REFERENCE SETTING
8.00mm2		3.91+/-0.05 [.154+/- .002]		4.1
5.00mm2		3.25+/-0.05 [.128+/- .002]		11.9
6.00mm2		3.20+/-0.05 [.126+/- .002]		12.4



- RECOMMENDED SPARE PARTS
- REFER TO SUPPLIED INSTRUCTION SHEET FOR CLEANING, LUBRICATION AND STORAGE OF APPLICATOR.
- APPLY PART NUMBER 2-23419-6 LOCTITE TO THREADS OF ITEM 242.
- CRIMP HEIGHT REFERENCE SETTING WAS THE SETTING USED WHEN THE APPLICATOR WAS QUALIFIED AT THE FACTORY. ADJUSTMENT MAY BE NECESSARY WHEN RUNNING APPLICATOR IN THE FIELD.
- TERMINAL PITCH NOT COMPATIBLE WITH MECHANICAL FEED.
6. UNLESS SPECIFIED OTHERWISE TORQUE VALUES SHALL BE USED PER DOCUMENT, 101-35000.

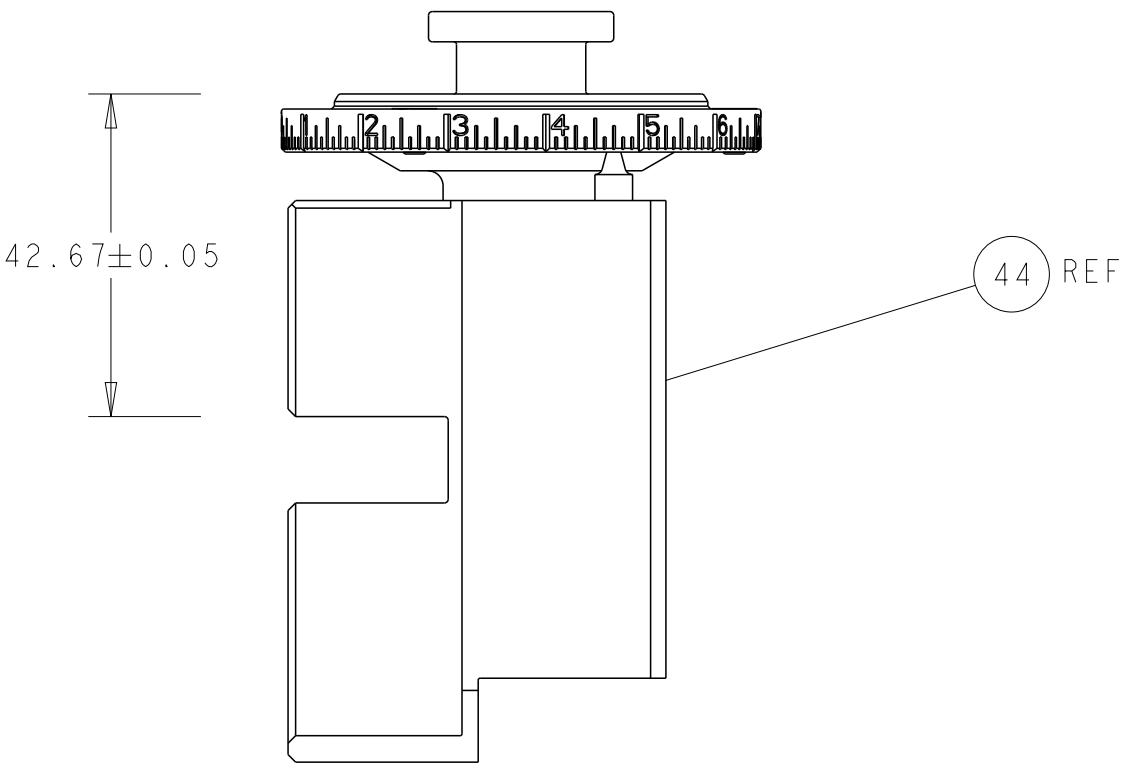
*WARNING
ON INSTALLATION, SET WIRE DISC TO CRIMP HEIGHT REFERENCE SETTING FOR LARGEST WIRE SIZE. CRIMP HEIGHT REFERENCE SETTINGS GREATER THAN THE VALUE SHOWN MAY CAUSE DAMAGE TO THE CRIMP TOOLING, REFER TO THE INSTRUCTION SHEET FOR PROPER SETUP AND ADJUSTMENTS.

2		1						
LOC	DIST	REVISIONS						
A	66	P	LTR	DESCRIPTION	DATE	DWN	APVD	
			-	-	26APR2010	-	-	
		A		RELEASE	28MAR2018	AW	GB	
		B		ECR-19-001547	29JAN2019	JAH	TE	
		C		ECR-23-192662	15NOV2023	JWC	TE	

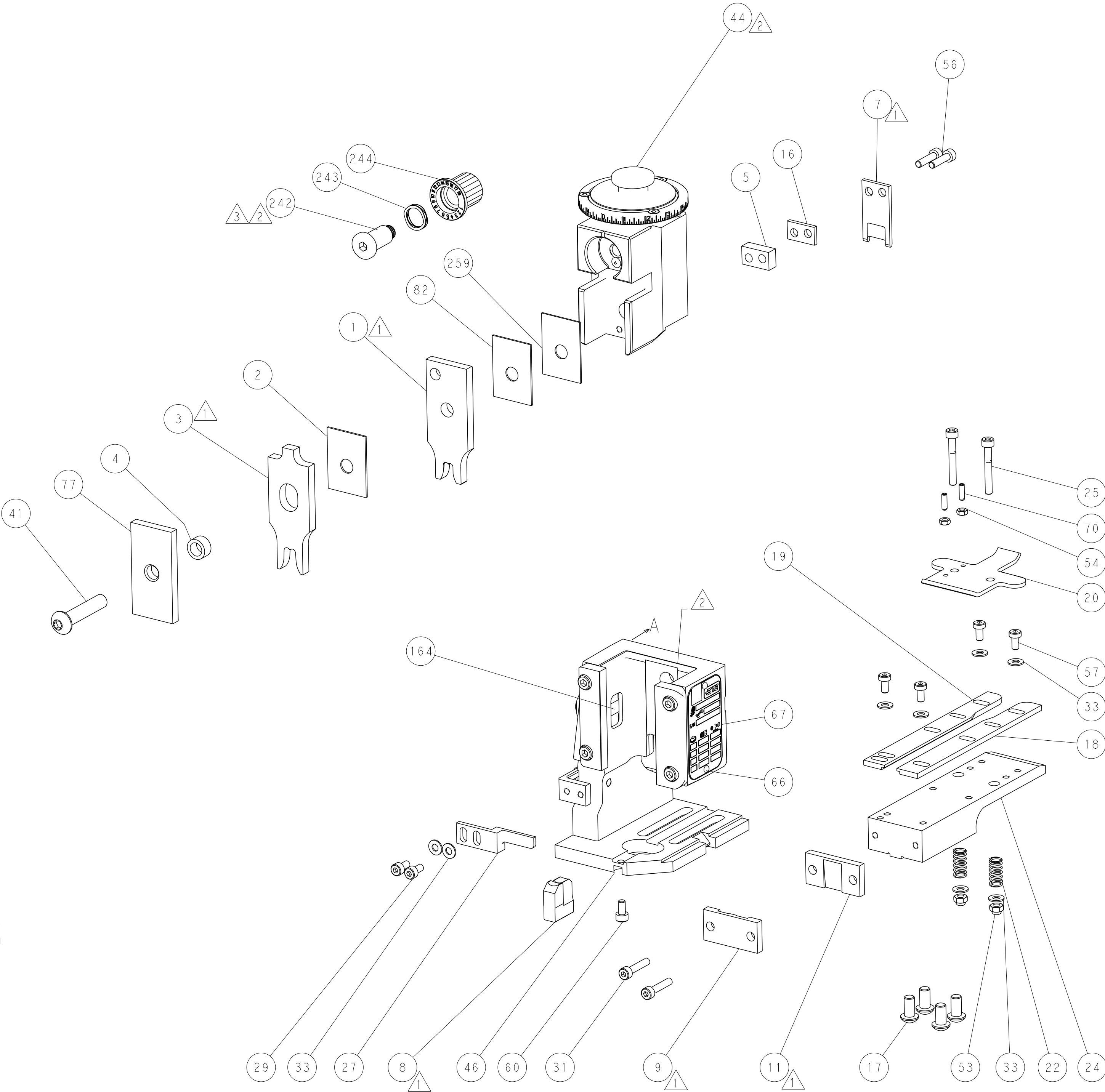
	-	1	1	1803078-1	SPACER, PRECISION	259
	-	1	1	2119641-1	FEED CAM, AIR FEED	248
	-	1	1	2119082-2	CAM, SNAIL, INSULATION ADJUSTMENT	244
	-	1	1	2079764-1	WASHER, WAVE SPRING, CREST-TO-CREST	243
	-	1	1	2119083-1	RETAINER, INSULATION DIAL	242
	-	1	1	2844940-4	AIR FEED MODULE	238
	-	REF	REF	994970-2	COUNTER, MAGNETIC	164
	-	1	1	455888-8	SPACER, CRIMPER -	82
	-	1	1	1-2119757-6	DEPRESSOR, SHEAR	77
	-	1	1	1803607-4	DOCUMENTATION PACKAGE	71
	-	2	2	2-18032-2	SCR, SET, FLT PNT, M3 X 10.0	70
	-	1	1	2119740-1	TAG, IDENTIFICATION	67
	-	2	2	2168078-1	SCREW, DRIVE, RH, RoHS, 2 x .188	66
	-	1	1	2168083-2	SCR, SKT HD CAP, RoHS, M4 X 8.0	60
	-	1	1	5-18022-5	SCR, HEX HD CAP, M4 X 6.0	59
	-	4	4	2168400-4	SHCS, LOW HEAD, RoHS, M4 X 8	57
	-	2	2	2168083-8	SCR, SKT HD CAP, RoHS, M4 X 16	56
	-	2	2	5018030-1	NUT, HEX, REG, RoHS, M3	54
	-	2	2	986965-8	NUT, LOCK, HEX, TORQUE (M4)	53
	-	1	1	2063961-1	FEED FINGER	51
	-	1	1	18023-9	SCR, SKT HD CAP M4 X 6.0	49
	-	1	1	2119655-5	APPLICATOR BASIC ASSEMBLY, EF	46
	-	1	1	1803517-2	RAM ASSEMBLY, EF ATLANTIC	44
	-	1	1	1803602-2	SCR, BHSC, RoHS (M8 X 40)	41
	-	8	8	1-18028-2	WASHER, FLAT, REG M4	33
	-	2	2	2168083-9	SCR, SKT HD CAP, RoHS, M4 X 20	31
	-	2	2	2168083-2	SCR, SKT HD CAP, RoHS, M4 X 8.0	29
	-	1	1	2280534-1	STRIPPER, OFFSET	27
	-	2	2	1-2168083-5	SCR, SKT HD CAP, RoHS, M4 X 30	25
	-	1	1	1752371-5	PLATE, STRIP GUIDE	24
	-	2	2	2-22281-3	SPRING, COMPRESSION	22
	-	1	1	1803292-4	DRAG	20
	-	1	1	1-1901696-0	STRIP GUIDE, REAR	19
	-	1	1	1-1901695-0	STRIP GUIDE, FRONT	18
	-	4	4	1-2079383-1	SCR, BHSC, RoHS (M6 X 12)	17
	-	1	1	4-240641-0	SPACER	16
	-	1	1	240644-1	PLATE, REAR SHEAR	11
	-	-	-	-	-	10
	-	1	1	690482-3	PLATE, FRONT SHEAR	9
	1	2	1	1803004-1	ANVIL, COMBINATION, END FEED	8
	-	1	1	1-2217206-5	BLADE, SLUG	7
	-	1	1	2-240641-2	SPACER	5
	-	1	1	6-238011-2	BLOCK, CRIMPER SPACER	4
	1	2	1	1-1803457-3	CRIMPER, INSULATION F PREMIUM	3
	-	1	1	455888-9	SPACER, CRIMPER -	2
	1	2	1	1-1803212-8	CRIMPER, WIRE PREMIUM	1
	-	77-72	-2	PART NO	DESCRIPTION	ITEM NO

THIS DRAWING IS UNPUBLISHED. IT IS SUBJECT TO CHANGE WITHOUT NOTICE. THE ORGANIZATION SHOULD BE CONTACTED FOR THE LATEST REVISION.				DWN R. KNEPPER 15-FEB-18	TE Connectivity Harrisburg, PA 17105-3608								
DIMENSIONS:		TOLERANCES UNLESS OTHERWISE SPECIFIED:		CHK T. BROOKENS 15-FEB-18	NAME								
mm		0 PLC ±.01 1 PLC ±.01 2 PLC ±.01 3 PLC ±.01 4 PLC ±.01 ANGLES ±.01 FINISH -		APVD J. DEGRANGE 15-FEB-18	PRODUCT SPEC								
		APPLICATION SPEC		SIZE				CAGE CODE	DRAWING NO	RESTRICTED TO			
MATERIAL		WEIGHT		A1				00779	C=2150885	-			
Customer Accessible Production Drawing				SCALE		1:1		SHEET		1 OF 4		REV	C

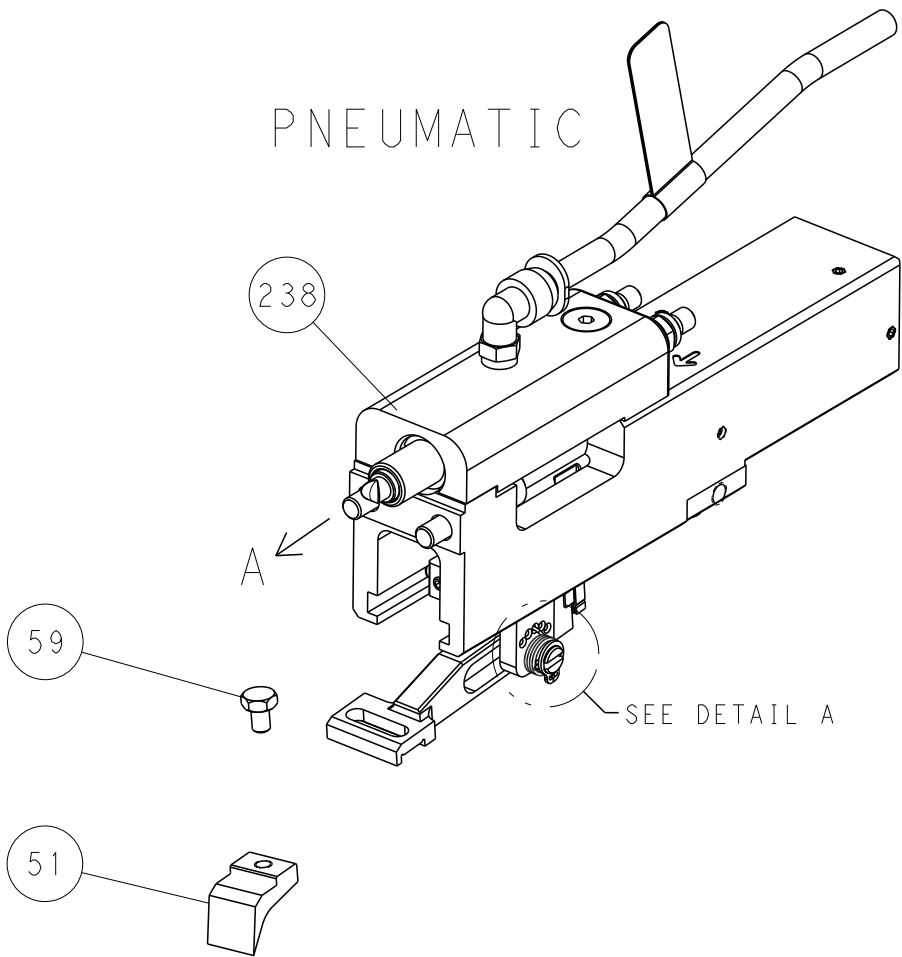
LOC	DIST	REVISIONS					
		P	LTR	DESCRIPTION	DATE	DWN	APVD
A	66	-	-	SEE SHEET 1	-	-	-



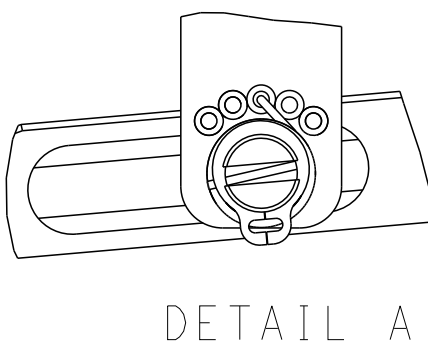
RAM SET-UP



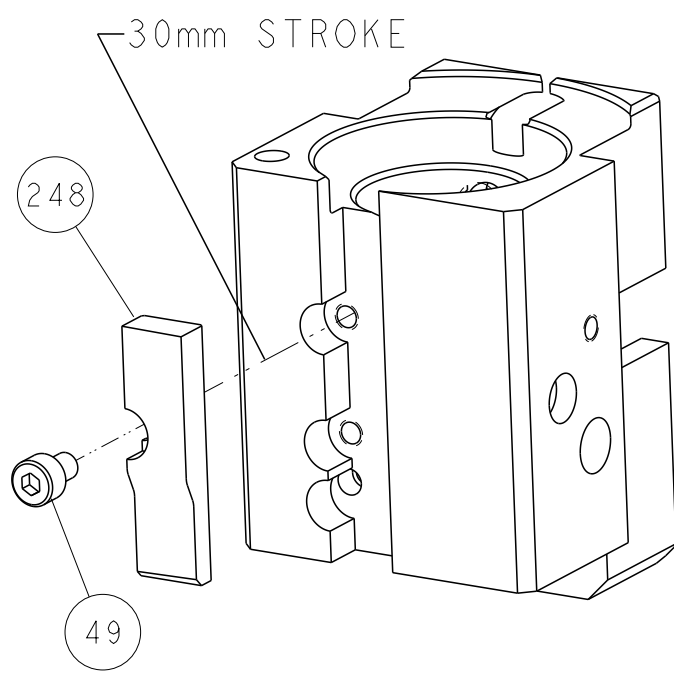
FEED TYPE



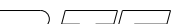

FEED SPRING SETTING POSITION



CAM POSITIONS



AIR FEED

THIS DRAWING IS A CONTROLLED DOCUMENT FOR TYCO ELECTRONICS CORPORATION. IT IS SUBJECT TO COMPANY CONTROL AND END-USERING ORGANIZATION SHOULD BE CONTACTED FOR THE LATEST EDITION.		DWN	R. KNEPPER	15-FEB-18	 TE Connectivity Harrisburg, PA 17105-3608			
		CHK	T. BROOKENS	15-FEB-18				
DIMENSIONS: mm		APVD	J. DEGRANGE	15-FEB-18	NAME	Ocean End Feed Applicator		
		PRODUCT SPEC						
		APPLICATION SPEC						
		SIZE			CAGE CODE	DRAWING NO	RESTRICTED TO	
		WEIGHT			A1	00779	C=2150885	-
		MATERIAL			-			
Customer Accessible Production Drawing								
				SCALE	1:1	SHEET 2 of 4	REV C	