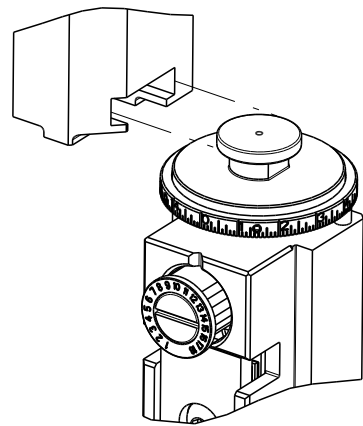





8		7	
THIS DRAWING IS UNPUBLISHED.		RELEASED FOR PUBLICATION 20	
© COPYRIGHT 20 BY TYCO ELECTRONICS CORPORATION. ALL RIGHTS RESERVED.			
PART NUMBER	REVISION	DESCRIPTION	FEED TYPE
2837143-2	B	FINE CRIMP HEIGHT ADJUST	PNEUMATIC
7-2837143-2	B	PNEUMATIC AND CRIMP TOOLING KIT	PNEUMATIC
7-2837143-7	A	CRIMP TOOLING KIT	-



APPLICATOR DATA		
CRIMP	SIZE	TYPE
WIRE	3.10 mm [.122]	F
INSUL	4.80 mm [.189]	OV
APPLICATOR INSTRUCTIONS 408-35042		

TERMINAL DATA: YAZAKI TERMINAL		YAZAKI CRIMP SPECIFICATION	
TERMINAL NAME: M-LC Type Terminal Female			
WIRE STRIP LENGTH		TERMINAL INSULATION DIAMETER RANGE	
5.00-6.00 mm [1.97-.236 IN]		$\varnothing 2.35-3.25$ mm [1.093-.128 IN]	
TERMINAL APPLICATION		72-WT10-3186 Rev WA2073	
SPECIFICATION			
TERMINALS APPLIED			
TE TERMINAL	YAZAKI TERMINAL	TE TERMINAL	YAZAKI TERMINAL
1949047-1	7116-2929-02		

WIRE SIZE		CRIMP HEIGHT mm [INCH]		CRIMP HEIGHT REFERENCE SETTING
3.00mm2		1.85+/-0.05 [1.073+/-0.002]		3.9
2.50mm2		1.70+/-0.05 [1.067+/-0.002]		5.4
2.00mm2		1.55+/-0.05 [1.061+/-0.002]		7.0

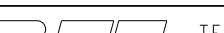


- ① RECOMMENDED SPARE PARTS
- ② REFER TO SUPPLIED INSTRUCTION SHEET FOR CLEANING, LUBRICATION AND STORAGE OF APPLICATOR.
- ③ APPLY PART NUMBER 2-23419-6 LOCTITE TO THREADS OF ITEM 242.
- ④ CRIMP HEIGHT REFERENCE SETTING WAS THE SETTING USED WHEN THE APPLICATOR WAS QUALIFIED AT THE FACTORY. ADJUSTMENT MAY BE NECESSARY WHEN RUNNING APPLICATOR IN THE FIELD.
5. UNLESS SPECIFIED OTHERWISE TORQUE VALUES SHALL BE USED PER DOCUMENT, 101-35000.
- ⑥ TERMINAL PITCH NOT COMPATIBLE WITH MECHANICAL FEED.

*WARNING
ON INSTALLATION, SET WIRE DISC TO CRIMP HEIGHT REFERENCE
SETTING FOR LARGEST WIRE SIZE. CRIMP HEIGHT REFERENCE
SETTINGS GREATER THAN THE VALUE SHOWN MAY CAUSE DAMAGE TO
THE CRIMP TOOLING. REFER TO THE INSTRUCTION SHEET FOR
PROPER SETUP AND ADJUSTMENTS.

2				1			
LOC	DIST	REVISIONS					
A	66	P	LTR	DESCRIPTION	DATE	DRN	APVD
		I		PRELIMINARY	25FEB2018	RK	JD
		A		RELEASE	20APR2018	AW	CT
		B		ECR-18-016277	14OCT2018	TB	TE

3	-	1	1	1803078-4	SPACER, PRECISION	259
	-	1	1	2119640-1	PUSH ROD, AIR FEED	250
	-	1	1	1803259-1	BUSHING, FLANGED	249
	-	1	1	2119641-1	FEED CAM, AIR FEED	248
	-	1	1	2119082-3	CAM, SNAIL, INSULATION ADJUSTMENT	244
	-	1	1	2079764-1	WASHER, WAVE SPRING, CREST-TO-CREST	243
	-	1	1	2119083-1	RETAINER, INSULATION DIAL	242
	-	1	1	7-18023-7	SCR, SKT HD CAP M3 X 4.0	241
	-	1	1	2063440-2	AIR FEED MODULE	238
	-	2	2	21045-3	RING, RETAIN, EXTERN, 3/16 CRESCENT	172
-	REF	REF	994970-2	COUNTER, MAGNETIC	164	
-	1	1	240638-1	SPRING, FEED FINGER	163	
-	1	1	3-23627-7	PIN, RETAIN, GRVD, 3/16 X .854	137	
-	1	1	2119799-1	HOLDER,FEED FINGER, AF	136	
-	1	1	1-22281-8	SPRING, COMPRESSION	121	
-	1	1	2844908-1	SCREW, LOCKING	99	
-	1	1	2844907-1	POST, LOCKING	98	
-	1	1	1-690438-0	FRONT STRIP GUIDE	96	
-	2	2	2168083-1	SCR, SKT HD CAP, RoHS, M3 X 8.0	95	
-	1	1	2168083-6	SCR, SKT HD CAP, RoHS, M5 X 65	93	
-	1	1	1-455888-1	SPACER, CRIMPER	82	
-	1	1	1803607-1	DOCUMENTATION PACKAGE	71	
-	1	1	2119740-1	TAG,IDENTIFICATION	67	
-	2	2	2168078-1	SCREW, DRIVE, RH, RoHS, 2 x .188	66	
-	2	2	2-18032-5	SCR, SET, FLT PNT, M5 X 20.0	61	
-	1	1	2168083-2	SCR, SKT HD CAP, RoHS, M4 X 8.0	60	
-	1	1	5-18022-5	SCR, HEX HD CAP, M4 X 6.0	59	
-	1	1	1338683-8	FEED PAWL	56	
-	4	4	2168083-3	SCR, SKT HD CAP, RoHS, M4 X 12.0	54	
-	2	2	1-2168083-0	SCR, SKT HD CAP, RoHS, M4 X 10	53	
-	1	1	1803382-2	HOLD DOWN, SPRING LOADED	50	
-	1	1	18023-9	SCR, SKT HD CAP M4 X 6.0	49	
-	1	1	1803583-9	APPLICATOR BASIC ASSEMBLY, SF	46	
-	1	1	1803515-2	RAM ASSEMBLY, SF ATLANTIC	44	
-	1	1	1803602-2	SCR, BHSC, RoHS (M8 X 40)	41	
-	1	1	1752356-3	SUPPORT, TERMINAL	34	
-	2	2	2079383-5	SCR, BHSC, RoHS (M4 X 20)	33	
-	2	2	2-2844962-8	SPACER, CYLINDRICAL, STRIP GUIDE	30	
-	1	1	2-2844938-7	PLATE, STRIP GUIDE	29	
-	1	1	455888-3	SPACER, CRIMPER	28	
-	2	2	22283-1	SPRING, COMPRESSION	27	
-	1	1	356835-1	LEVER, DRAG RELEASE	26	
-	1	1	240792-1	DRAG, TERMINAL	25	
-	1	1	1320928-2	STRIP GUIDE	24	
-	1	1	980371-4	SCR, SKT HD SHLDR 5.0 DIA X 6.0	23	
-	1	1	2168083-2	SCR, SKT HD CAP, RoHS, M4 X 8.0	21	
-	2	2	1-18028-2	WASHER, FLAT, REG M4	20	
-	1	1	2119533-1	STRIPPER, SIDE FEED	19	
-	1	1	2119806-1	INSERT, SHEAR	13	
-	1	1	3-22280-3	SPRING, COMPRESSION	12	
-	1	1	1-356885-3	STOP, SHEAR	11	
-	1	1	2119805-1	SHEAR HOLDER, FRONT	10	
-	1	1	1803095-1	FLOATING SHEAR, FRONT -	9	
1	2	1	2-1803537-2	ANVIL, COMBINATION	8	
-	-	-	-	-	7	
-	-	-	-	-	6	
-	1	1	2119757-8	DEPRESSOR, SHEAR	5	
-	1	1	3-238011-5	BLOCK, CRIMPER SPACER	4	
1	2	1	4-1803199-2	CRIMPER, INSULATION OVERLAP PREMIUM	3	
-	1	1	455888-7	SPACER, CRIMPER	2	
1	2	1	1-568176-3	CRIMPER, WIRE	1	

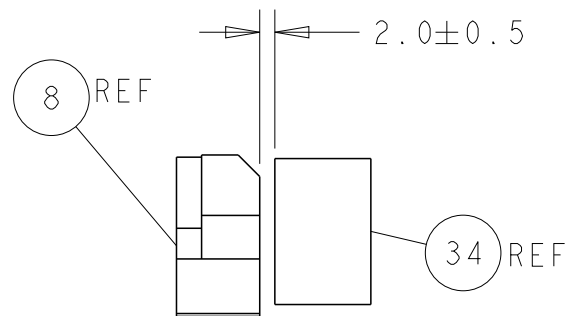
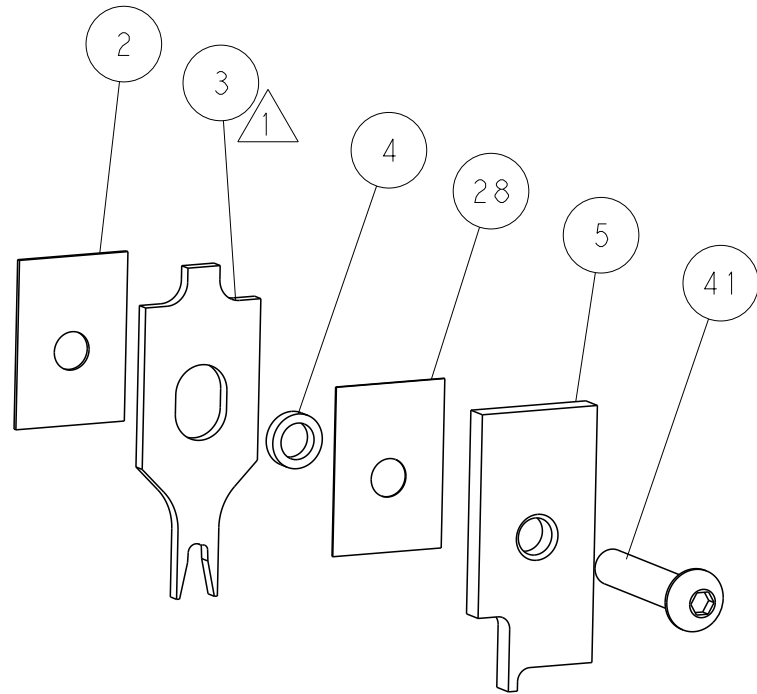
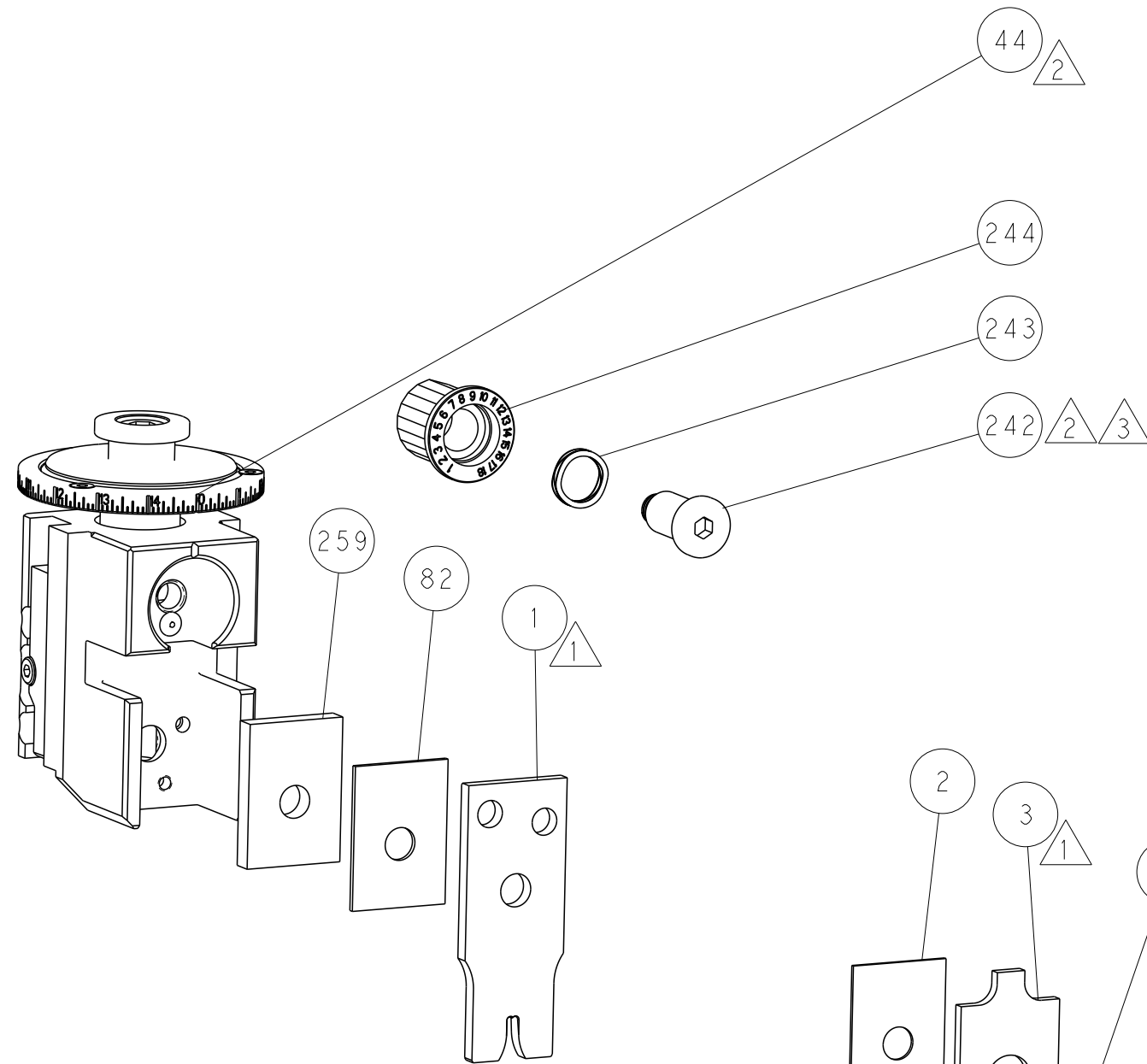
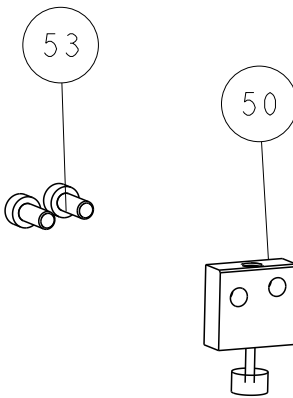
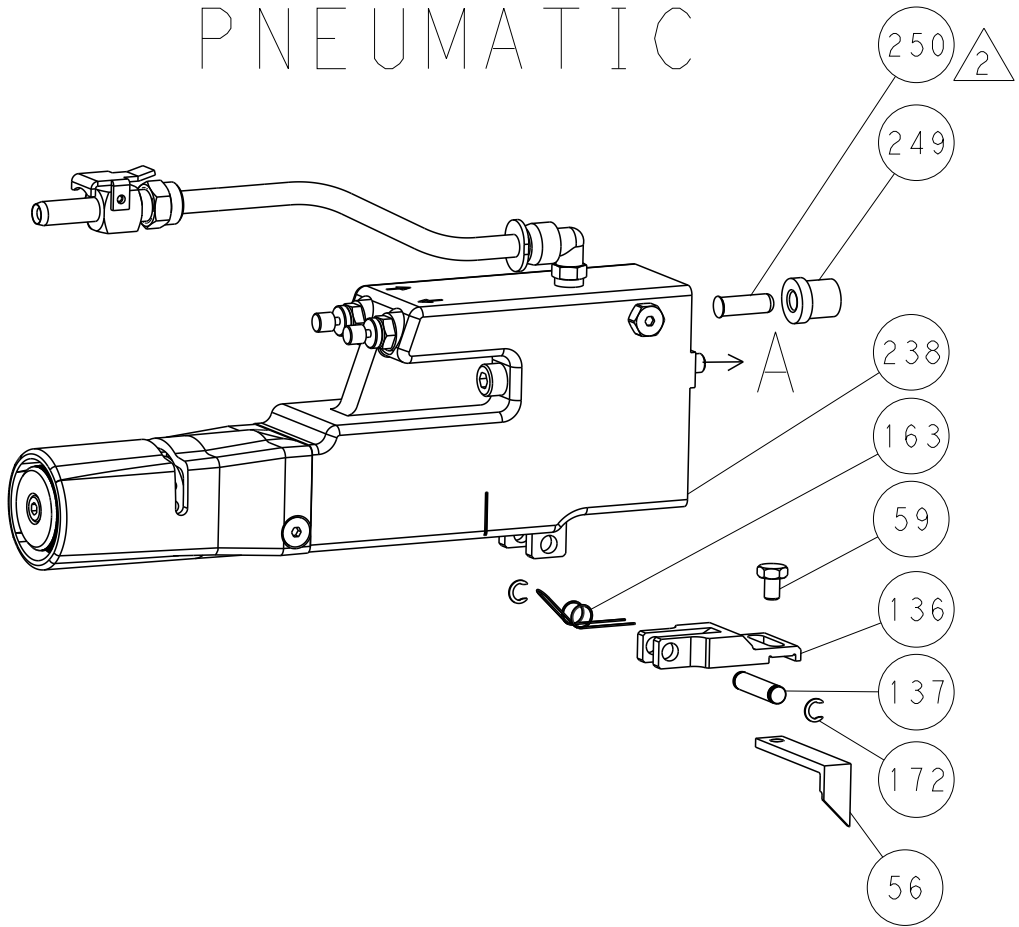
THIS DRAWING IS A COMPUTER GENERATED PART AND THEREFORE NO DIMENSIONAL TOLERANCES SHOULD BE SPECIFIED FOR THE LATEST VERSION.		OWN 25-FEB-18 CHK R. KNEPPER APP J. BROOKS DATE 25-FEB-18		 TE Connectivity Harrisburg, PA 17105-3608	
DIMENSIONS: mm		TOLERANCES UNLESS OTHERWISE SPECIFIED:		NAME Ocean Side Feed Applicator	

ATLANTIC VERSION
Shown on sheets 1 of 4 & 2 of 4
(Pacific version shown on sheets 3 of 4 & 4 of 4)

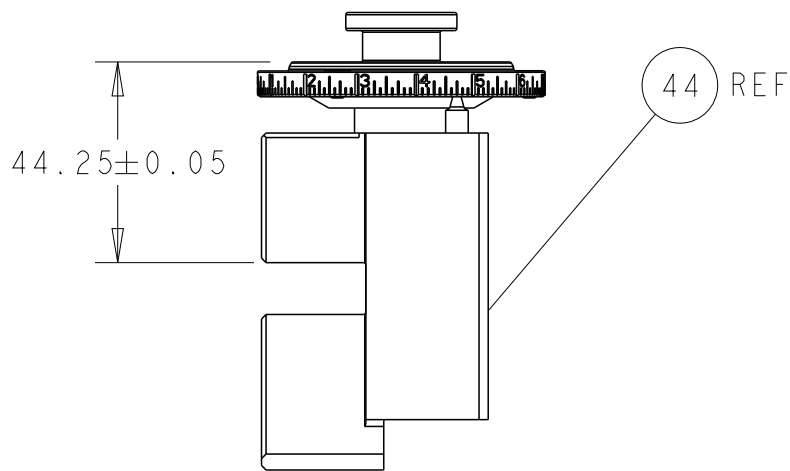
LOC		DIST		REVISIONS				
A	66	P	LTR	DESCRIPTION	DATE	DWN	APVD	
		-		SEE SHEET 1	-	-	-	

FEED TYPE

PNEUMATIC

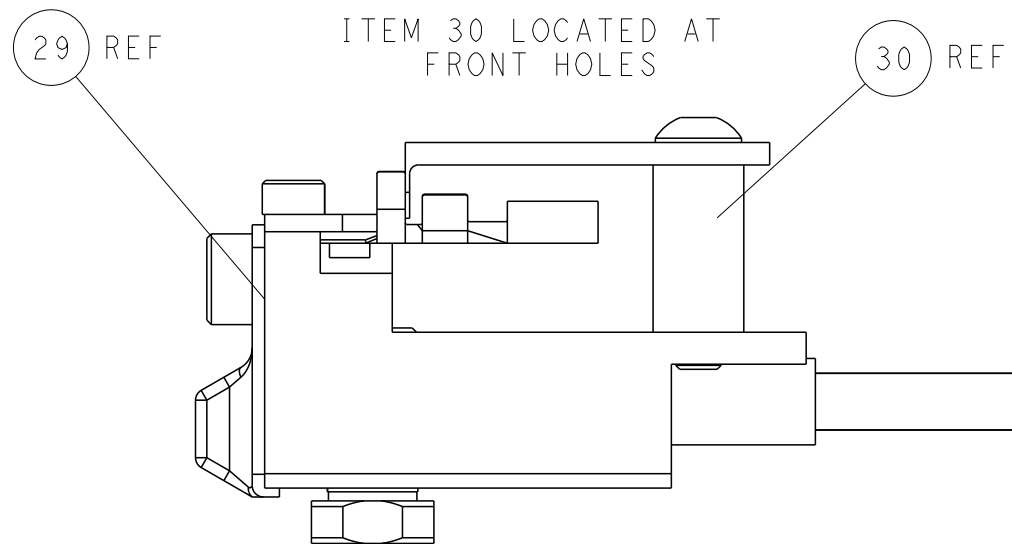
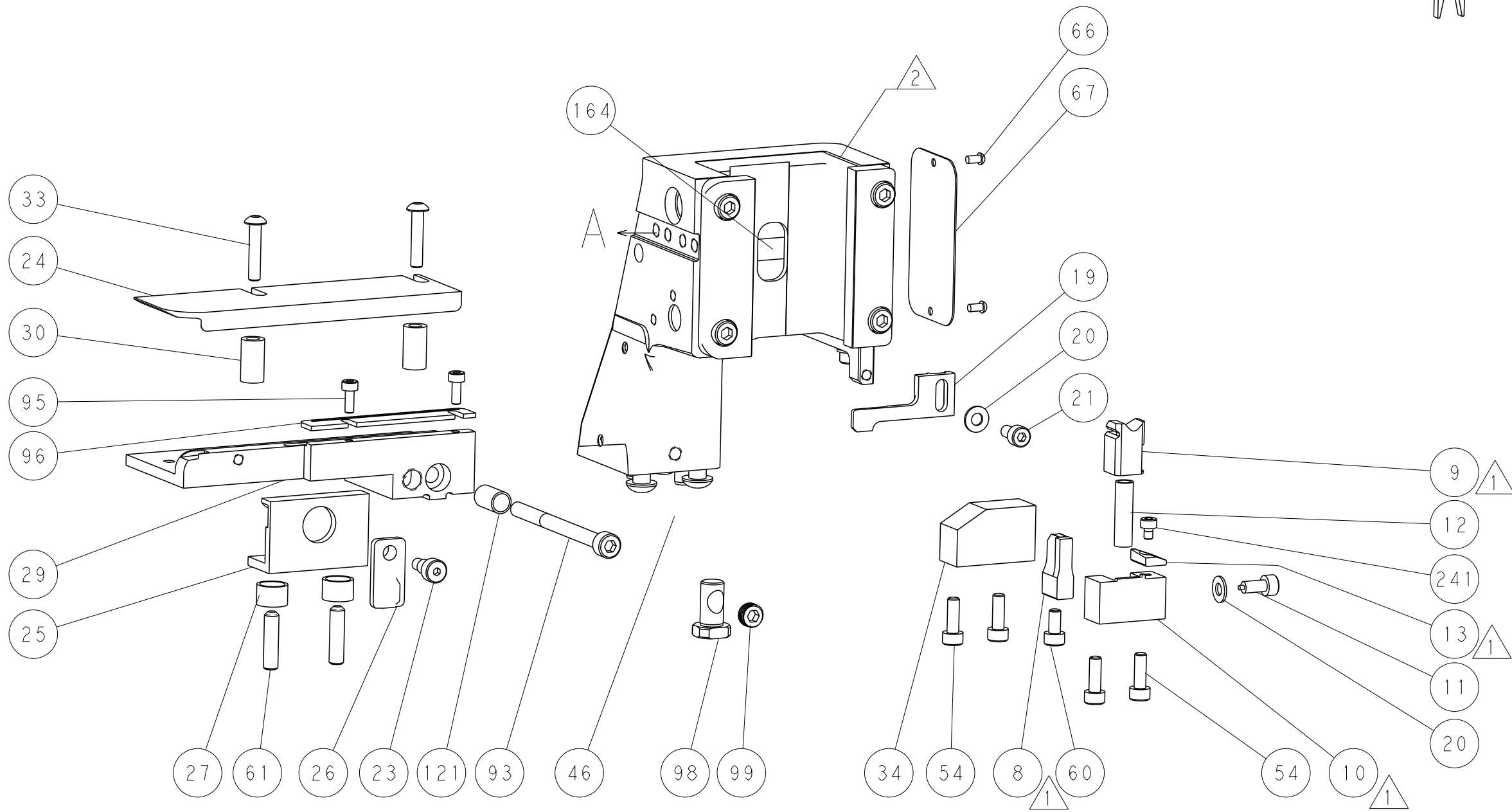
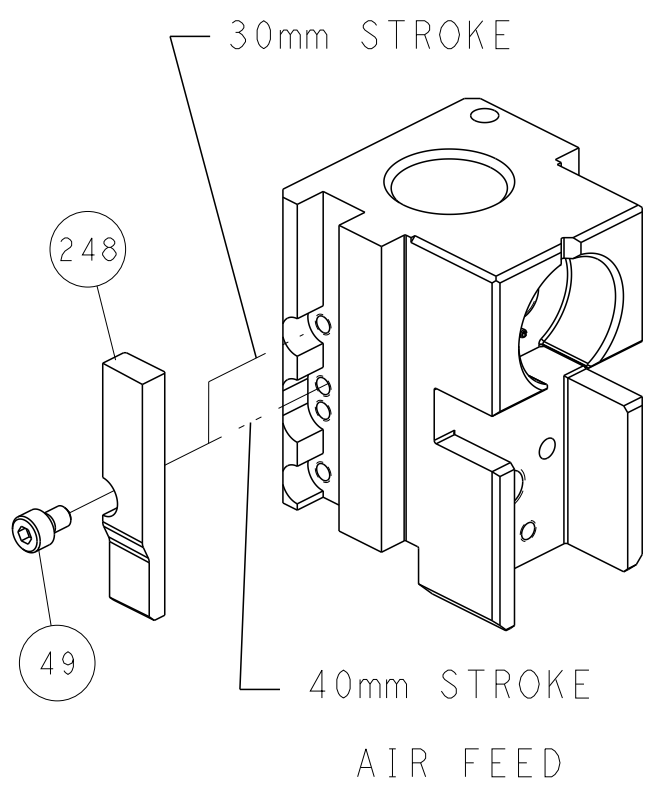


TERMINAL SUPPORT LOCATION




RAM SET-UP

CAM POSITION



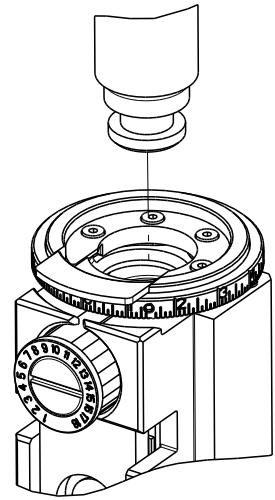
FEED TRACK POSITION
GUIDE BY INSULATION BARREL

ATLANTIC VERSION
Shown on sheets 1 of 4 & 2 of 4
(Pacific version shown on sheets 3 of 4 & 4 of 4)

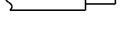


THIS DRAWING IS UNPUBLISHED. IT IS SUBJECT TO CHANGE WITHOUT NOTICE. IT IS SUBJECT TO CHANGE WITHOUT NOTICE. IT IS SUBJECT TO CHANGE WITHOUT NOTICE. IT IS SUBJECT TO CHANGE WITHOUT NOTICE.				DWN	R. KNEPPER	25-FEB-18	 TE Connectivity Harrisburg, PA 17105-3608				
				CHK	T. BROOKENS	25-FEB-18					
				APVD	J. DEGRANGE	25-FEB-18					
				NAME				Ocean Side Feed Applicator			
DIMENSIONS:				PRODUCT SPEC				SIZE			
mm				APPLICATION SPEC							
				WEIGHT							
				SCALE							
				SHEET							
MATERIAL				FINISH				RESTRICTED TO			
				CAGE CODE							
				DRAWING NO							
				REV							
				B							

8		7	
THIS DRAWING IS UNPUBLISHED.		RELEASED FOR PUBLICATION	
20		20	
© COPYRIGHT 20 BY TYCO ELECTRONICS CORPORATION. ALL RIGHTS RESERVED.			
PART NUMBER	REVISION	DESCRIPTION	FEED TYPE
2-2837143-2	B	FINE CRIMP HEIGHT ADJUST	PNEUMATIC
7-2837143-7	A	CRIMP TOOLING KIT	-

PACIFIC VERSION TERMINATOR
INTERFACE ADAPTER



APPLICATOR DATA		
CRIMP	SIZE	TYPE
WIRE	3.10 mm [.122]	F
INSUL	4.80 mm [.189]	OV
APPLICATOR INSTRUCTIONS 408-35042		

TERMINAL DATA: YAZAKI TERMINAL				YAZAKI CRIMP SPECIFICATION			
TERMINAL NAME: M-LC Type Terminal Female							
WIRE STRIP LENGTH							
5.00-6.00 mm [.197-.236 IN]				TERMINAL INSULATION DIAMETER RANGE			
				Ø2.35-3.25 mm [.093-.128 IN]			
TERMINAL APPLICATION 				72-WT10-3186 Rev WA2073			
SPECIFICATION				-			
TERMINALS APPLIED 							
TE TERMINAL		YAZAKI TERMINAL		TE TERMINAL		YAZAKI TERMINAL	
1949047-1		7116-2929-02					

WIRE SIZE	CRIMP HEIGHT mm [INCH]	CRIMP HEIGHT REFERENCE SETTING
3.00mm2	1.85+/-0.05 [.073+/- .002]	3.9
2.50mm2	1.70+/-0.05 [.067+/- .002]	5.4
2.00mm2	1.55+/-0.05 [.061+/- .002]	7.0



- RECOMMENDED SPARE PARTS
- REFER TO SUPPLIED INSTRUCTION SHEET FOR CLEANING, LUBRICATION AND STORAGE OF APPLICATOR.
- APPLY PART NUMBER 2-23419-6 LOCTITE TO THREADS OF ITEM 242.
- CRIMP HEIGHT REFERENCE SETTING WAS THE SETTING USED WHEN THE APPLICATOR WAS QUALIFIED AT THE FACTORY. ADJUSTMENT MAY BE NECESSARY WHEN RUNNING APPLICATOR IN THE FIELD.
5. UNLESS SPECIFIED OTHERWISE TORQUE VALUES SHALL BE USED PER DOCUMENT, 101-35000.
- TERMINAL PITCH NOT COMPATIBLE WITH MECHANICAL FEED.

*WARNING
ON INSTALLATION, SET WIRE DISC TO CRIMP HEIGHT REFERENCE SETTING FOR LARGEST WIRE SIZE. CRIMP HEIGHT REFERENCE SETTINGS GREATER THAN THE VALUE SHOWN MAY CAUSE DAMAGE TO THE CRIMP TOOLING. REFER TO THE INSTRUCTION SHEET FOR PROPER SETUP AND ADJUSTMENTS.

PACIFIC VERSION
Shown on sheets 3 of 4 & 4 of 4
(Atlantic version shown on sheets 1 of 4 & 2 of 4)

LOC	DIST	REVISIONS				
		P	LTR	DESCRIPTION	DATE	DWN
A	66	-	-	SEE SHEET 1	-	-

	-	1	1803078-4	SPACER, PRECISION	259
	-	1	2119640-1	PUSH ROD, AIR FEED	250
	-	1	1803259-1	BUSHING, FLANGED	249
	-	1	2119082-3	CAM, SNAIL, INSULATION ADJUSTMENT	244
	-	1	2079764-1	WASHER, WAVE SPRING, CREST-TO-CREST	243
3	-	1	2119083-1	RETAINER, INSULATION DIAL	242
	-	1	7-18023-7	SCR, SKT HD CAP M3 X 4.0	241
	-	1	2063440-2	AIR FEED MODULE	238
	-	2	21045-3	RING, RETAIN, EXTERN, 3/16 CRESCENT	172
	-	REF	994970-2	COUNTER, MAGNETIC	164
	-	1	240638-1	SPRING, FEED FINGER	163
	-	1	2119641-2	FEED CAM, AIR FEED	151
	-	1	2168083-8	SCR, SKT HD CAP, RoHS, M4 X 16	144
	-	4	2168083-9	SCR, SKT HD CAP, RoHS, M4 X 20	143
	-	1	1-1803583-0	APPLICATOR BASIC ASSEMBLY, SF	141
	-	1	1803516-2	RAM ASSEMBLY, SF PACIFIC	140
	-	1	3-23627-7	PIN, RETAIN, GRVD, 3/16 X .854	137
	-	1	2119799-1	HOLDER,FEED FINGER, AF	136
	-	1	1-22281-8	SPRING, COMPRESSION	121
	-	1	2844908-1	SCREW, LOCKING	99
	-	1	2844907-1	POST, LOCKING	98
	-	1	1-690438-0	FRONT STRIP GUIDE	96
	-	2	2168083-1	SCR, SKT HD CAP, RoHS, M3 X 8.0	95
	-	1	2168083-6	SCR, SKT HD CAP, RoHS, M5 X 65	93
	-	1	1-455888-1	SPACER, CRIMPER	82
	-	1	1803607-1	DOCUMENTATION PACKAGE	71
	-	1	2119740-1	TAG,IDENTIFICATION	67
	-	2	2168078-1	SCREW, DRIVE, RH, RoHS, 2 x .188	66
	-	2	2-18032-5	SCR, SET, FLT PNT, M5 X 20.0	61
	-	1	5-18022-5	SCR, HEX HD CAP, M4 X 6.0	59
	-	1	1338683-8	FEED PAWL	56
	-	2	1-2168083-0	SCR, SKT HD CAP, RoHS, M4 X 10	53
	-	1	1803382-2	HOLD DOWN, SPRING LOADED	50
	-	1	18023-9	SCR, SKT HD CAP M4 X 6.0	49
	-	1	1803602-2	SCR, BHSC, RoHS (M8 X 40)	41
	-	1	1752356-3	SUPPORT, TERMINAL	34
	-	2	2079383-5	SCR, BHSC, RoHS (M4 X 20)	33
	-	2	2-2844962-8	SPACER, CYLINDRICAL, STRIP GUIDE	30
	-	1	2-2844938-7	PLATE, STRIP GUIDE	29
	-	1	455888-3	SPACER, CRIMPER	28
	-	2	22283-1	SPRING, COMPRESSION	27
	-	1	356835-1	LEVER, DRAG RELEASE	26
	-	1	240792-1	DRAG, TERMINAL	25
	-	1	1320928-2	STRIP GUIDE	24
	-	1	980371-4	SCR, SKT HD SHLDR 5.0 DIA X 6.0	23
	-	1	2168083-2	SCR, SKT HD CAP, RoHS, M4 X 8.0	21
	-	2	1-18028-2	WASHER, FLAT, REG M4	20
	-	1	2119533-1	STRIPPER, SIDE FEED	19
1	-	1	2119806-1	INSERT, SHEAR	13
	-	1	3-22280-3	SPRING, COMPRESSION	12
	-	1	1-356885-3	STOP, SHEAR	11
1	-	1	2119805-1	SHEAR HOLDER, FRONT	10
	-	1	1803095-1	FLOATING SHEAR, FRONT -	9
1	1	1	2-1803537-2	ANVIL, COMBINATION	8
	-	-	-	-	7
	-	-	-	-	6
	-	1	2119757-8	DEPRESSOR, SHEAR	5
	-	1	3-238011-5	BLOCK, CRIMPER SPACER	4
1	1	1	4-1803199-2	CRIMPER, INSULATION OVERLAP PREMIUM	3
	-	1	455888-7	SPACER, CRIMPER	2
1	1	1	1-568176-3	CRIMPER, WIRE	1

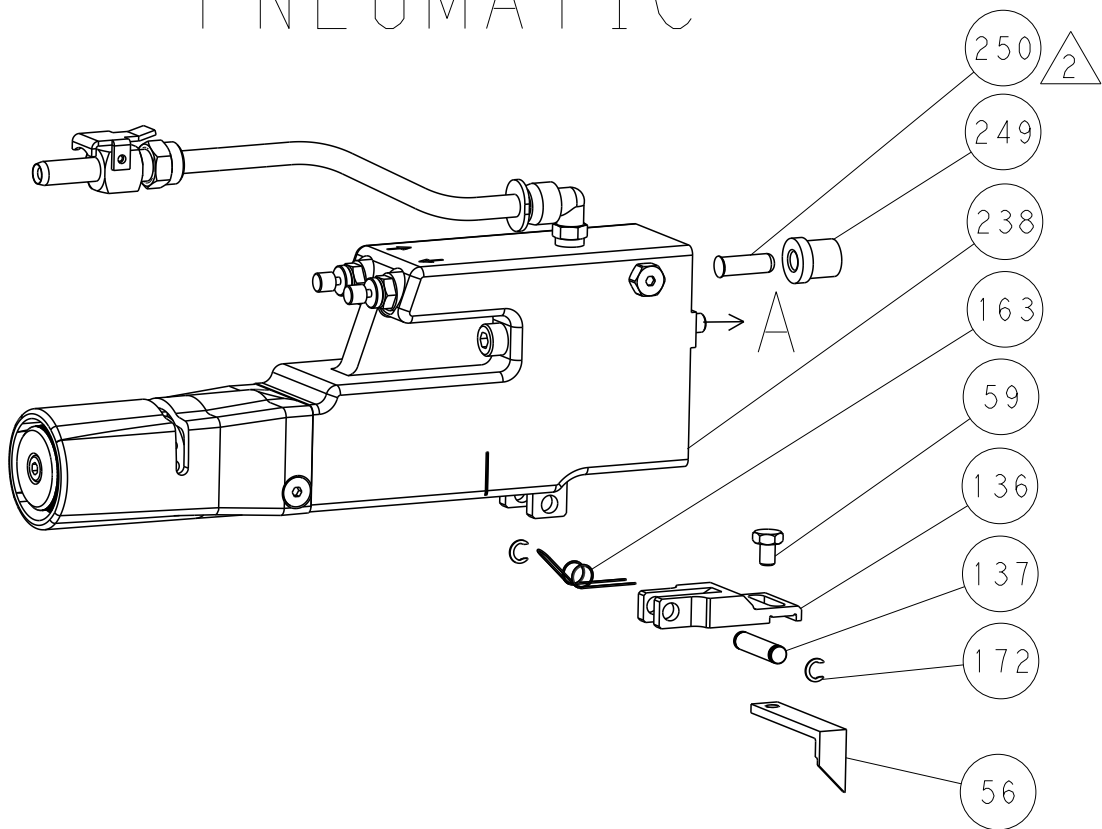
-77	-22	PART NO	DESCRIPTION	ITEM NO
		TE Connectivity Harrisburg, PA 17105-3608		
		Ocean Side Feed Applicator		
		SIZE	CAGE CODE	DRAWING NO
		A1	00779	2837143
		Customer Accessible Production Drawing		
		SCALE	1:2	SHEET 3 OF 4
		REV B		

SHEETS 1 & 2 ARE NOT REQUIRED FOR PACIFIC VERSION

LOC	DIST	REVISIONS					
		P	LTR	DESCRIPTION	DATE	DWN	APVD
A	66	-	-	SEE SHEET 1	-	-	-

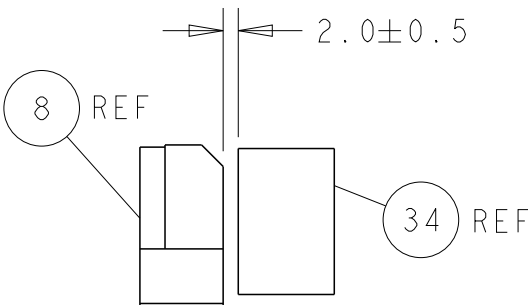
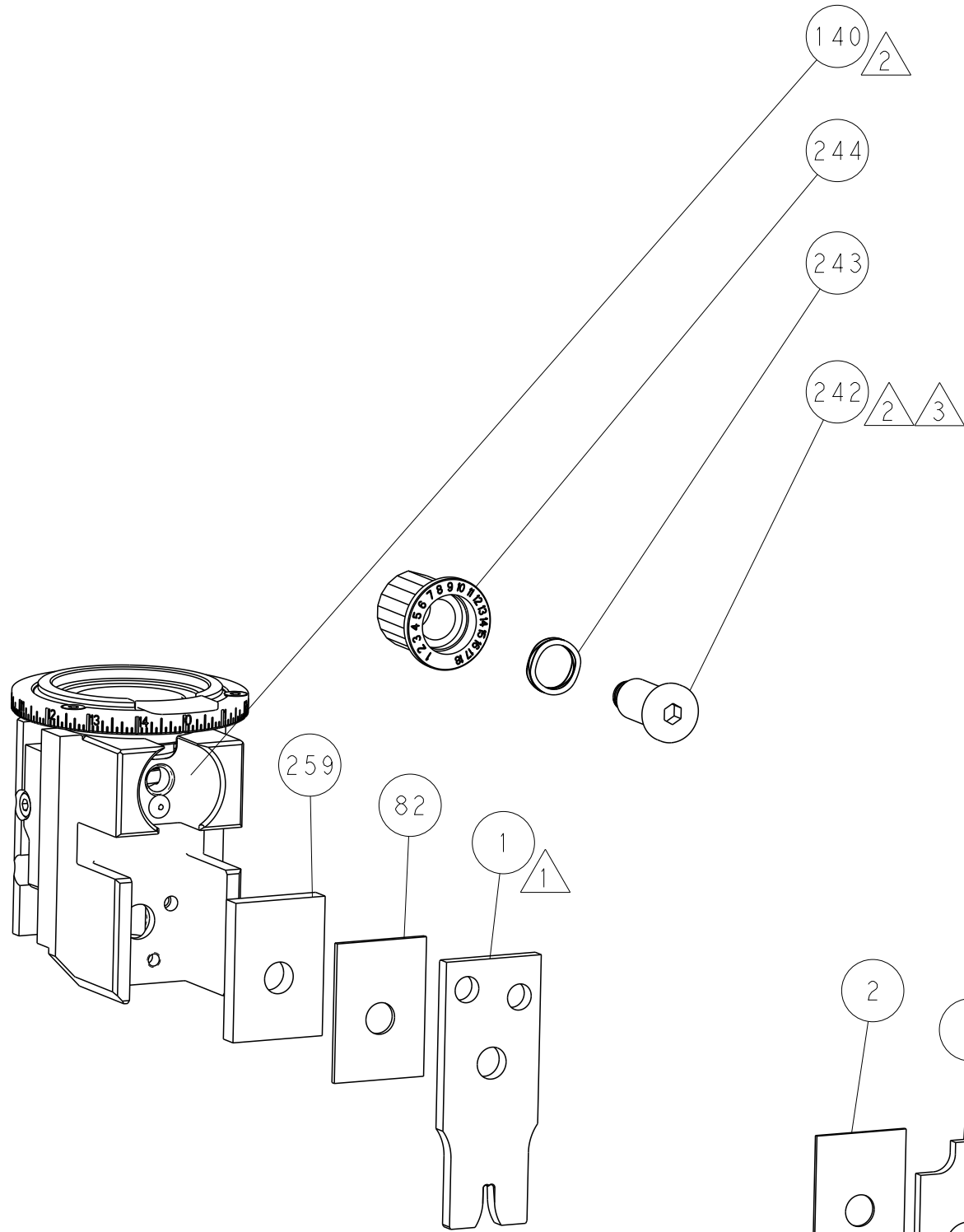
FEED TYPE

PNEUMATIC

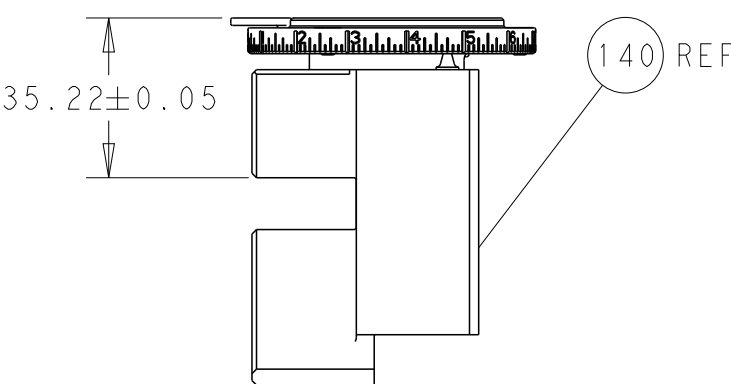


53

50

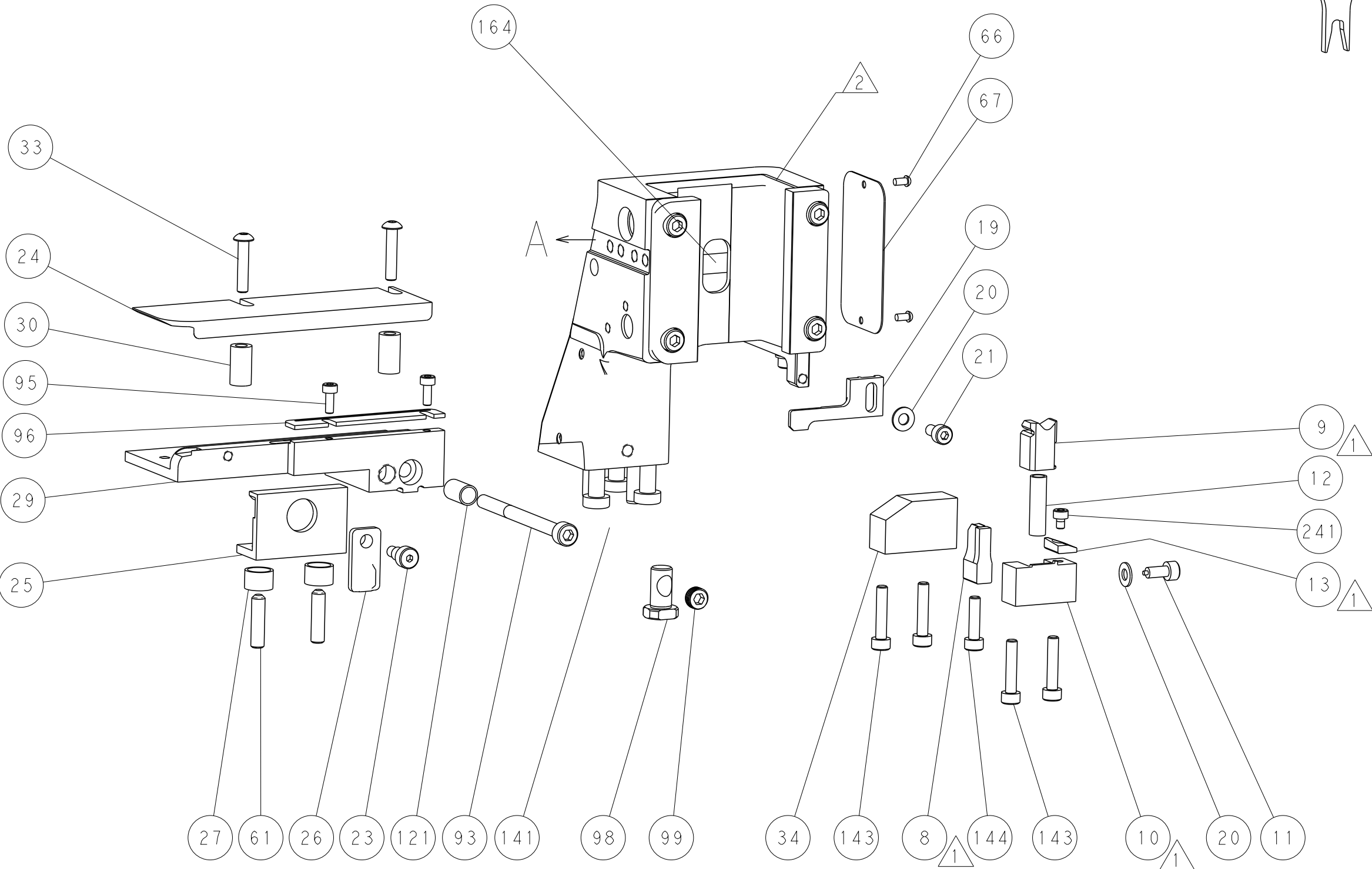
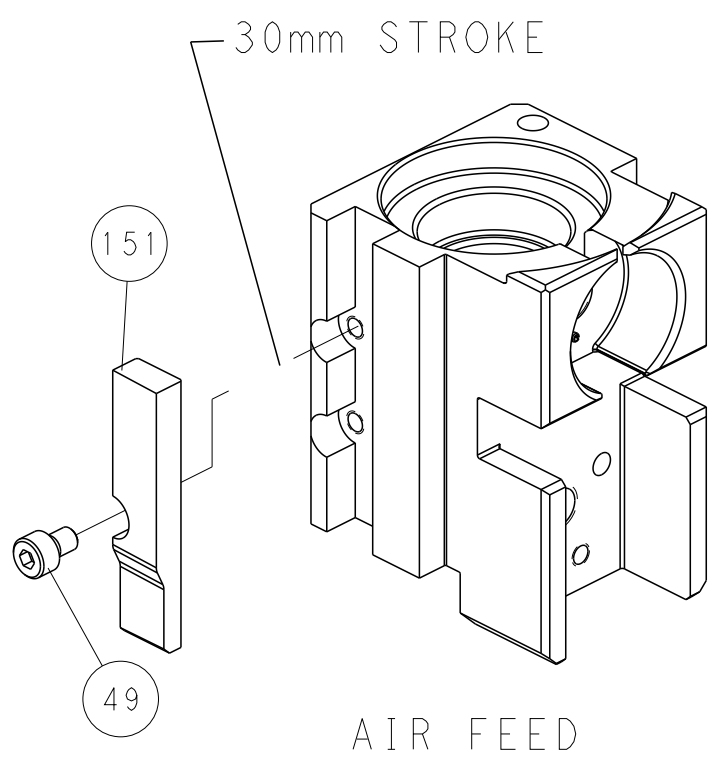


TERMINAL SUPPORT LOCATION



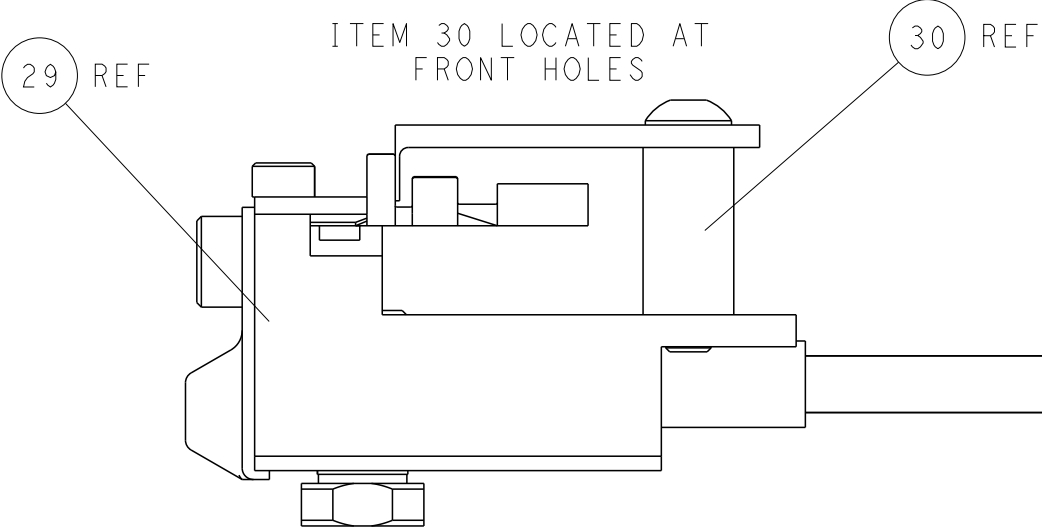
RAM SET-UP

CAM POSITION





PACIFIC VERSION

Shown on sheets 3 of 4 & 4 of 4
(Atlantic version shown on sheets 1 of 4 & 2 of 4)



FEED TRACK POSITION
GUIDE BY INSULATION BARREL

THIS DRAWING IS A CONTROLLED DOCUMENT FOR TYCO ELECTRONICS CORPORATION. IT IS SUBJECT TO CHANGE WITHOUT NOTICE. ANY CHANGES TO THIS DRAWING SHOULD BE CONTACTED FOR THE LATEST REVISION.										DWN R. KNEPPER 25-FEB-18		 TE Connectivity Harrisburg, PA 17105-3608											
										CHK T. BROOKENS 25-FEB-18													
										APVD J. DEGRANGE 25-FEB-18													
										PRODUCT SPEC													
DIMENSIONS: mm										TOLERANCES UNLESS OTHERWISE SPECIFIED:		NAME		Ocean Side Feed Applicator -									
										0 PLC ±		SIZE A1						CAGE CODE 00779		DRAWING NO C=2837143		RESTRICTED TO -	
										1 PLC ±													
										2 PLC ±													
										3 PLC ±													
										4 PLC ±													
										ANGLES ±													
										FINISH													
MATERIAL -										WEIGHT -													
Customer Accessible Production Drawing														SCALE 1:2		SHEET 4		OF 4		REV B			