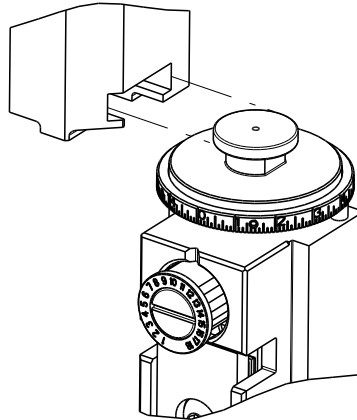

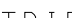


8		7	
THIS DRAWING IS UNPUBLISHED.		RELEASED FOR PUBLICATION	
2018		2018	
© COPYRIGHT 2018 BY TYCO ELECTRONICS CORPORATION. ALL RIGHTS RESERVED.			
PART NUMBER	REVISION	DESCRIPTION	FEED TYPE
2837435-2	B	FINE CRIMP HEIGHT ADJUST	PNEUMATIC
7-2837435-2	B	PNEUMATIC AND CRIMP TOOLING KIT	PNEUMATIC
7-2837435-7	A	CRIMP TOOLING KIT	-

ATLANTIC VERSION TERMINATOR  
INTERFACE ADAPTER



APPLICATOR DATA		
CRIMP	SIZE	TYPE
WIRE	1.70 mm [.067]	F
INSUL	3.10 mm [.122]	F
APPLICATOR INSTRUCTIONS 408-35042		

TERMINAL DATA: MOLEX TERMINAL		MOLEX CRIMP SPECIFICATION	
TERMINAL NAME: CRIMP TERMINAL, MALE .093 DIA			
WIRE STRIP LENGTH			TERMINAL INSULATION DIAMETER RANGE
3.96-5.54 mm [.156-.218 IN]			Ø2.29-3.05 mm [.090-.120 IN]
TERMINAL APPLICATION SPECIFICATION		ATS-638927000 Rev A	-
		-	-



TERMINALS APPLIED

TE TERMINAL	MOLEX TERMINAL	TE TERMINAL	MOLEX TERMINAL
940318-1	02-09-2116	940318-2	02-09-6122
940318-3	02-09-6125	940318-6	02-09-2117
940318-7	02-09-2127	940318-8	39-00-0283

WIRE SIZE	CRIMP HEIGHT mm [INCH]	CRIMP HEIGHT REFERENCE SETTING
18 AWG	1.44+/-0.035 [.056+/- .0015]	7.3
20 AWG	1.34+/-0.035 [.053+/- .0015]	8.2
22 AWG	1.26+/-0.04 [.050+/- .002]	9.0



- RECOMMENDED SPARE PARTS
- REFER TO SUPPLIED INSTRUCTION SHEET FOR CLEANING, LUBRICATION AND STORAGE OF APPLICATOR.
- APPLY PART NUMBER 2-23419-6 LOCTITE TO THREADS OF ITEM 242.
- CRIMP HEIGHT REFERENCE SETTING WAS THE SETTING USED WHEN THE APPLICATOR WAS QUALIFIED AT THE FACTORY. ADJUSTMENT MAY BE NECESSARY WHEN RUNNING APPLICATOR IN THE FIELD.
- TERMINAL LUBRICANT IS RECOMMENDED.
- UNLESS SPECIFIED OTHERWISE TORQUE VALUES SHALL BE USED PER DOCUMENT, 101-35000.
- TERMINAL PITCH NOT COMPATIBLE WITH MECHANICAL FEED.

TERMINAL DATA: MOLEX TERMINAL		MOLEX CRIMP SPECIFICATION	
TERMINAL NAME: CRIMP TERMINAL, FEMALE .093 DIA			
WIRE STRIP LENGTH			TERMINAL INSULATION DIAMETER RANGE
3.96-5.54 mm [.156-.218 IN]			Ø2.29-3.05 mm [.090-.120 IN]
TERMINAL APPLICATION SPECIFICATION	 ATS-638927000 Rev A	-	-

TERMINALS APPLIED

TE TERMINAL	MOLEX TERMINAL	TE TERMINAL	MOLEX TERMINAL
940319-1	02-09-1117	940319-2	02-09-5143
940319-3	02-09-5130	940319-4	02-09-1122
940319-7	02-09-1115	1-940319-0	39-00-0284
1-940319-1	39-00-0285		

\*WARNING  
ON INSTALLATION, SET WIRE DISC TO CRIMP HEIGHT REFERENCE SETTING FOR LARGEST WIRE SIZE. CRIMP HEIGHT REFERENCE SETTINGS GREATER THAN THE VALUE SHOWN MAY CAUSE DAMAGE TO THE CRIMP TOOLING. REFER TO THE INSTRUCTION SHEET FOR PROPER SETUP AND ADJUSTMENTS.

ATLANTIC VERSION  
Shown on sheets 1 of 4 & 2 of 4  
(Pacific version shown on sheets 3 of 4 & 4 of 4)

LOC	DIST	REVISIONS			
A	66	P	LTR	DESCRIPTION	DATE
		I		PRELIMINARY	14SEP12018
		A		RELEASED	15JAN2019
		B		ECR-21-004344	15APR2021

-	1	1	455888-2	SPACER, CRIMPER	279
-	2	2	2168083-1	SCR, SKT HD CAP, RoHS, M3 X 8.0	269
-	1	1	1633782-8	FENCE	267
-	1	1	2119641-1	FEED CAM, AIR FEED	248
-	1	1	2119082-7	CAM, SNAIL, INSULATION ADJUSTMENT	244
-	1	1	2079764-1	WASHER, WAVE SPRING, CREST-TO-CREST	243
-	1	1	2119083-1	RETAINER, INSULATION DIAL	242
-	1	1	2844940-1	AIR FEED MODULE	238
-	REF	REF	994970-2	COUNTER, MAGNETIC	164
-	1	1	2217068-1	BRACKET, AIR BLAST	130
-	1	1	2030758-3	TUBING, POLYURETHANE	129
-	1	1	986965-8	NUT, LOCK, HEX, TORQUE (M4)	128
-	1	1	2-2168083-6	SCR, SKT HD CAP, RoHS, M4 X 18	127
-	1	1	986220-3	CLAMP, CABLE, BLACK	126
-	1	1	2-2168083-5	SCR, SKT HD CAP, RoHS, M4 X 14	125
-	1	1	1-22281-8	SPRING, COMPRESSION	121
-	1	1	2119955-1	ASSY, LUBRICATOR, SIDE FEED	113
-	1	1	23238-1	INSERT, COUPLING	101
-	1	1	2844908-1	SCREW, LOCKING	99
-	1	1	2844907-1	POST, LOCKING	98
-	1	1	3-690712-9	FRONT STRIP GUIDE	96
-	2	2	2168083-1	SCR, SKT HD CAP, RoHS, M3 X 8.0	95
-	1	1	2168083-6	SCR, SKT HD CAP, RoHS, M5 X 65	93
-	1	1	455888-5	SPACER, CRIMPER	82
-	1	1	1803607-3	DOCUMENTATION PACKAGE	71
-	1	1	2119740-1	TAG, IDENTIFICATION	67
-	2	2	2168078-1	SCREW, DRIVE, RH, RoHS, 2 x .188	66
-	2	2	2-18032-5	SCR, SET, FLT PNT, M5 X 20.0	61
-	1	1	2168083-2	SCR, SKT HD CAP, RoHS, M4 X 8.0	60
-	1	1	5-18022-5	SCR, HEX HD CAP, M4 X 6.0	59
-	1	1	1338685-1	PAWL, FEED	56
-	2	2	2168083-3	SCR, SKT HD CAP, RoHS, M4 X 12.0	53
-	1	1	1803382-6	HOLD DOWN, SPRING LOADED	50
-	1	1	18023-9	SCR, SKT HD CAP M4 X 6.0	49
-	1	1	1803583-9	APPLICATOR BASIC ASSEMBLY, SF	46
-	1	1	1803515-1	RAM ASSEMBLY, SF ATLANTIC	44
-	1	1	1803602-1	SCR, BHSC, RoHS (M8 X 25)	41
-	2	2	2079383-5	SCR, BHSC, RoHS (M4 X 20)	33
-	2	2	2844962-2	SPACER, CYLINDRICAL, STRIP GUIDE	30
-	1	1	4-2844938-7	PLATE, STRIP GUIDE	29
-	2	2	22281-8	SPRING, COMPRESSION	27
-	1	1	356835-1	LEVER, DRAG RELEASE	26
-	1	1	3-690754-7	DRAG, SPECIAL	25
-	1	1	1-1320860-7	STRIP GUIDE, REAR	24
-	1	1	980371-4	SCR, SKT HD SHLDR 5.0 DIA X 6.0	23
-	1	1	2168083-2	SCR, SKT HD CAP, RoHS, M4 X 8.0	21
-	8	8	1-18028-2	WASHER, FLAT, REG M4	20
-	1	1	2119533-6	STRIPPER, SIDE FEED	19
-	1	1	5-853720-3	BLADE, SLUG	10
-	1	1	2844234-2	PLATE, REAR SHEAR	9
-	1	2	1633054-7	ANVIL, SPECIAL	8
-	1	1	240641-9	SPACER	7
-	-	-	-	-	6
-	-	-	-	-	5
-	1	1	238009-4	BLOCK, FL CRIMPER SPACER	4
-	1	2	8-1803016-8	CRIMPER, INSULATION F	3
-	1	1	455888-4	SPACER, CRIMPER	2
-	1	2	3-1803556-0	CRIMPER, WIRE F	1
-77-72	-2		PART NO	DESCRIPTION	ITEM NO

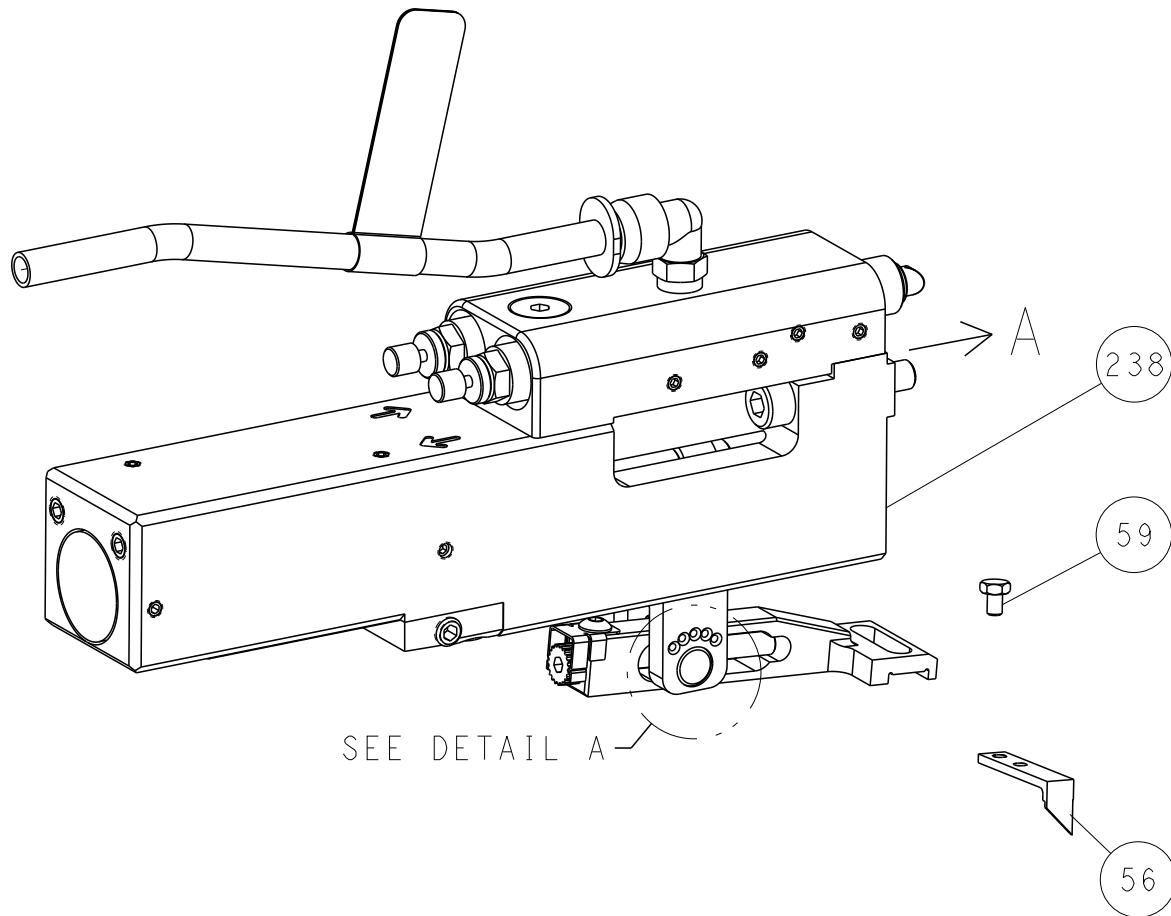
THIS DRAWING IS A CONTROLLED DOCUMENT AND THE LATEST EDITION IS THE ONLY ONE TO BE USED. IT IS SUBJECT TO CHANGE WITHOUT NOTICE. THE ORGANIZATION SHOULD BE CONTACTED FOR THE LATEST EDITION.		OWN M. HERR CHK T. ELBIN APVD B. BAIR	14SEP12018 14SEP12018 14SEP12018	TE Connectivity Harrisburg, PA 17105-3608	
DIMENSIONS: mm		TOLERANCES UNLESS OTHERWISE SPECIFIED: 0 PLC ±.001 1 PLC ±.001 2 PLC ±.001 3 PLC ±.001 4 PLC ±.001 ANGLES ±.001		NAME Ocean Side Feed Applicator	
MATERIAL -		FINISH -		SIZE A	
				CAGE CODE 00779	
				DRAWING NO 2837435	
				RESTRICTED TO -	
				Customer Accessible Production Drawing	
				SCALE 1:2	
				SHEET 1 OF 4	
				REV B	

SHEETS 3 & 4 ARE NOT REQUIRED FOR ATLANTIC VERSION

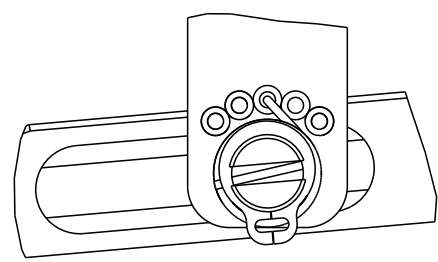
LOC	DIST	REVISIONS					
		P	LTR	DESCRIPTION	DATE	DWN	APVD
A	66	-	-	SEE SHEET 1	-	-	-

# FEED TYPE

## PNEUMATIC

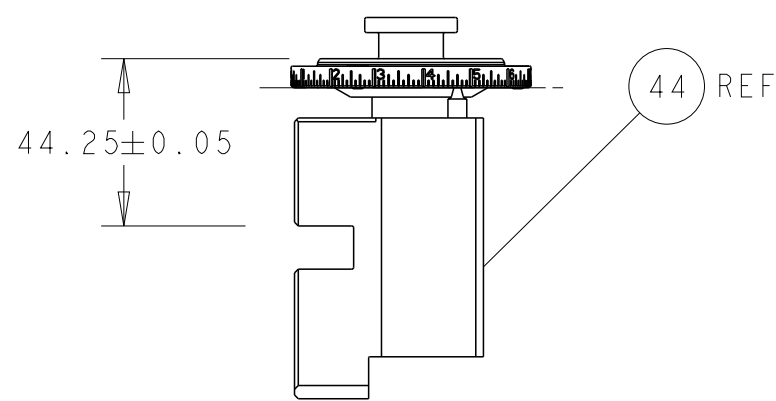
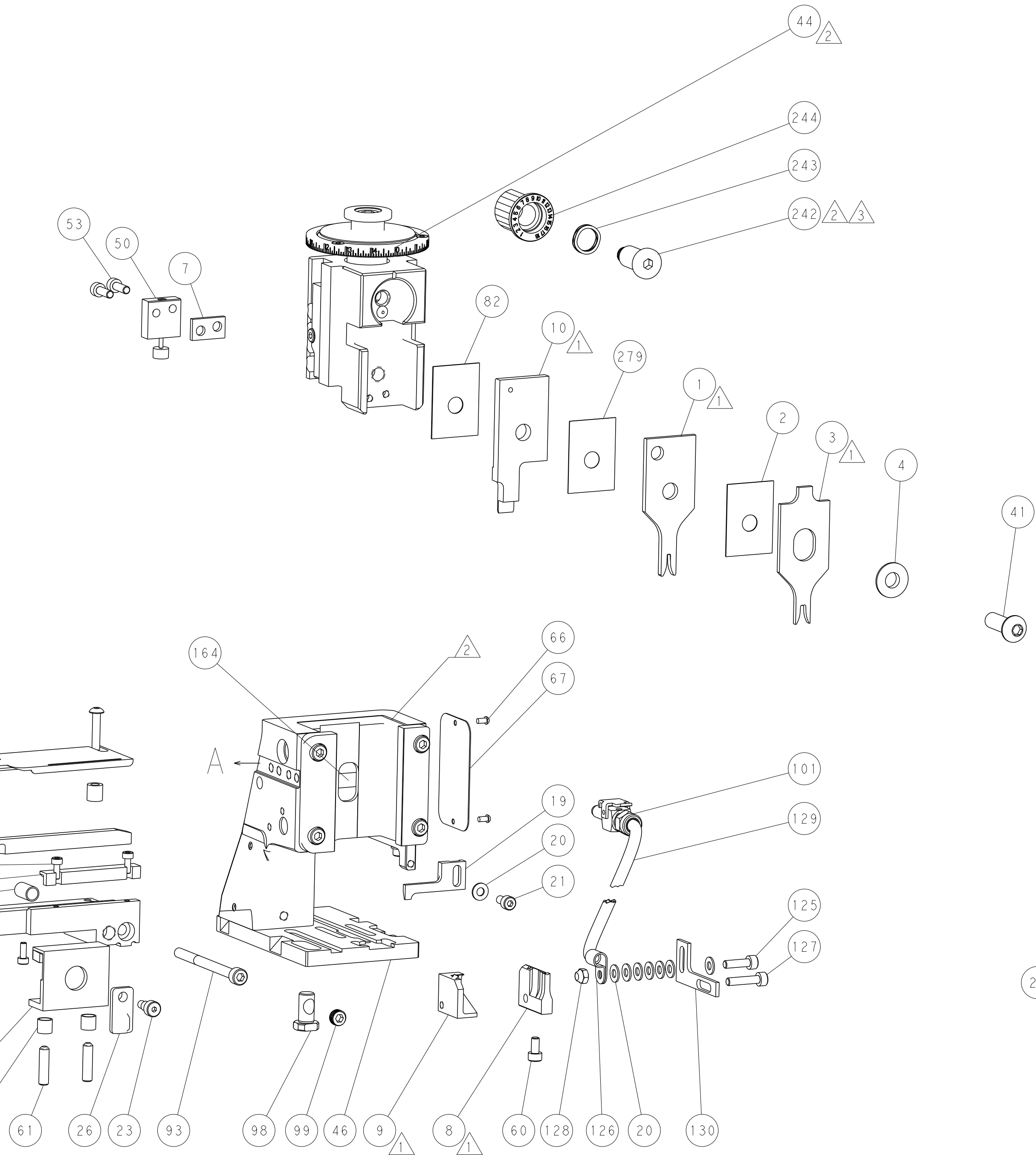
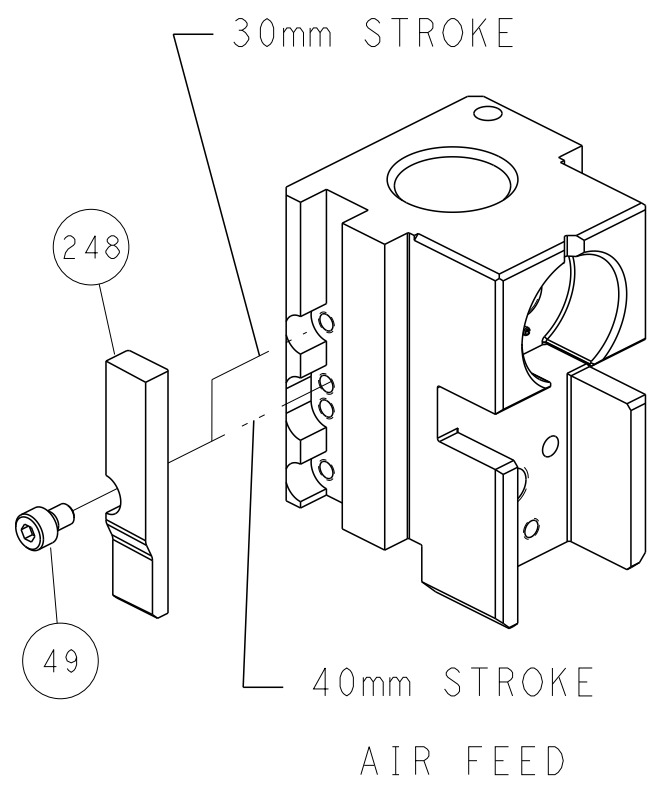


FEED SPRING SETTING POSITION  
(SHOWN FROM REAR SIDE)

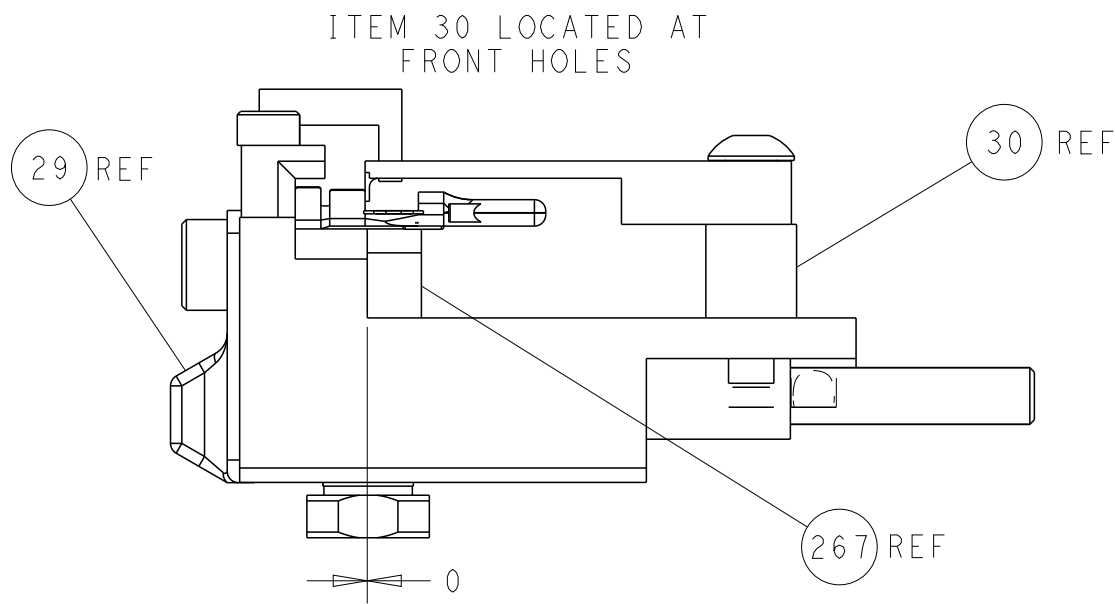


DETAIL A

# CAM POSITION

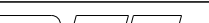


RAM SET-UP



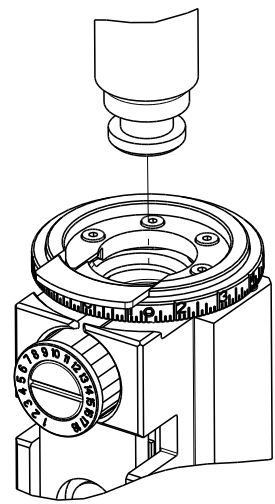
FEED TRACK POSITION  
GUIDE BY WIRE BARREL


ATLANTIC VERSION  
Shown on sheets 1 of 4 & 2 of 4  
(Pacific version shown on sheets 3 of 4 & 4 of 4)



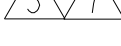
THIS DRAWING IS A CONTROLLED DOCUMENT FOR TYCO ELECTRONICS CORPORATION. IT IS SUBJECT TO COMPANY POLICY AND ANY CHANGING ORGANIZATION SHOULD BE CONTACTED FOR THE LATEST VERSION.										DWN M. HERR 14SEPT2018		 TE Connectivity Harrisburg, PA 17105-3608	
										CHK T. ELBIN 14SEPT2018			
										APVD B. BAIR 14SEPT2018			
										PRODUCT SPEC			
DIMENSIONS:										TOLERANCES, UNLESS OTHERWISE SPECIFIED:		NAME Ocean Side Feed Applicator	
mm													




SHEETS 3 & 4 ARE NOT REQUIRED FOR ATLANTIC VERSION

8		7	
THIS DRAWING IS UNPUBLISHED.		RELEASED FOR PUBLICATION 2018	
© COPYRIGHT 2018 BY TYCO ELECTRONICS CORPORATION. ALL RIGHTS RESERVED.			
PART NUMBER	REVISION	DESCRIPTION	FEED TYPE
2-2837435-2	B	FINE CRIMP HEIGHT ADJUST	PNEUMATIC
7-2837435-7	A	CRIMP TOOLING KIT	-



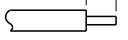

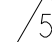

APPLICATOR DATA		
CRIMP	SIZE	TYPE
WIRE	1.70 mm [.067]	F
INSUL	3.10 mm [.122]	F
APPLICATOR INSTRUCTIONS 408-35042		

TERMINAL DATA: MOLEX TERMINAL		MOLEX CRIMP SPECIFICATION	
TERMINAL NAME: CRIMP TERMINAL, MALE .093 DIA			
WIRE STRIP LENGTH 3.96-5.54 mm [.156-.218 IN]		 TERMINAL INSULATION DIAMETER RANGE $\varnothing$ 2.29-3.05 mm [.090-.120 IN]	
TERMINAL APPLICATION SPECIFICATION  ATS-638927000 Rev A		- - - - - -	
TERMINALS APPLIED 			
TE TERMINAL	MOLEX TERMINAL	TE TERMINAL	MOLEX TERMINAL
940318-1	02-09-2116	940318-2	02-09-6122
940318-3	02-09-6125	940318-6	02-09-2117
940318-7	02-09-2127	940318-8	39-00-0283

WIRE SIZE			CRIMP HEIGHT mm [INCH]		CRIMP HEIGHT REFERENCE SETTING
18 AWG			1.44+/-0.035 [0.056+/-0.0015]		7.3
20 AWG			1.34+/-0.035 [0.053+/-0.0015]		8.2
22 AWG			1.26+/-0.04 [0.050+/-0.002]		9.0





- ① RECOMMENDED SPARE PARTS
- ② REFER TO SUPPLIED INSTRUCTION SHEET FOR CLEANING, LUBRICATION AND STORAGE OF APPLICATOR.
- ③ APPLY PART NUMBER 2-23419-6 LOCTITE TO THREADS OF ITEM 242.
- ④ CRIMP HEIGHT REFERENCE SETTING WAS THE SETTING USED WHEN THE APPLICATOR WAS QUALIFIED AT THE FACTORY. ADJUSTMENT MAY BE NECESSARY WHEN RUNNING APPLICATOR IN THE FIELD.
- ⑤ TERMINAL LUBRICANT IS RECOMMENDED.
6. UNLESS SPECIFIED OTHERWISE TORQUE VALUES SHALL BE USED PER DOCUMENT, 101-35000.
- ⑦ TERMINAL PITCH NOT COMPATIBLE WITH MECHANICAL FEED.

TERMINAL DATA: MOLEX TERMINAL		MOLEX CRIMP SPECIFICATION	
TERMINAL NAME: CRIMP TERMINAL, FEMALE .093 DIA			
WIRE STRIP LENGTH 3.96-5.54 mm [1.56-.218 IN]		 TERMINAL INSULATION DIAMETER RANGE $\varnothing 2.29-3.05$ mm [.090-.120 IN]	
TERMINAL APPLICATION  ATS-638927000 Rev A		-	-
SPECIFICATION		-	-
TERMINALS APPLIED  			
TE TERMINAL	MOLEX TERMINAL	TE TERMINAL	MOLEX TERMINAL
940319-1	02-09-1117	940319-2	02-09-5143
940319-3	02-09-5130	940319-4	02-09-1122
940319-7	02-09-1115	1-940319-0	39-00-0284
1-940319-1	39-00-0285		

```
*WARNING
ON INSTALLATION, SET WIRE DISC TO CRIMP HEIGHT REFERENCE
SETTING FOR LARGEST WIRE SIZE. CRIMP HEIGHT REFERENCE
SETTINGS GREATER THAN THE VALUE SHOWN MAY CAUSE DAMAGE TO
THE CRIMP TOOLING. REFER TO THE INSTRUCTION SHEET FOR
PROPER SETUP AND ADJUSTMENTS.
```

LOC	DIST	REVISIONS					
A	66	P	LTR	DESCRIPTION	DATE	DWN	APVD
		-		SEE SHEET 1	-	-	-

	-	1	455888-2	SPACER, CRIMPER	279
	-	2	2168083-1	SCR, SKT HD CAP, RoHS, M3 X 8.0	269
	-	1	1633782-8	FENCE	267
	-	1	2119082-7	CAM, SNAIL, INSULATION ADJUSTMENT	244
	-	1	2079764-1	WASHER, WAVE SPRING, CREST-TO-CREST	243
3	-	1	2119083-1	RETAINER, INSULATION DIAL	242
	-	1	2844940-1	AIR FEED MODULE	238
	-	REF	994970-2	COUNTER, MAGNETIC	164
	-	1	2119641-2	FEED CAM, AIR FEED	151
	-	1	2168083-8	SCR, SKT HD CAP, RoHS, M4 X 16	144
	-	1	1-1803583-0	APPLICATOR BASIC ASSEMBLY, SF	141
	-	1	1803516-1	RAM ASSEMBLY, SF PACIFIC	140
	-	1	2217068-1	BRACKET, AIR BLAST	130
	-	1	2030758-3	TUBING, POLYURETHANE	129
	-	1	986965-8	NUT, LOCK, HEX, TORQUE (M4)	128
	-	1	2-2168083-6	SCR, SKT HD CAP, RoHS, M4 X 18	127
	-	1	986220-3	CLAMP, CABLE, BLACK	126
	-	1	2-2168083-5	SCR, SKT HD CAP, RoHS, M4 X 14	125
	-	1	1-22281-8	SPRING, COMPRESSION	121
5	-	1	2119955-1	ASSY, LUBRICATOR, SIDE FEED	113
	-	1	23238-1	INSERT, COUPLING	101
	-	1	2844908-1	SCREW, LOCKING	99
	-	1	2844907-1	POST, LOCKING	98
	-	1	3-690712-9	FRONT STRIP GUIDE	96
	-	2	2168083-1	SCR, SKT HD CAP, RoHS, M3 X 8.0	95
	-	1	2168083-6	SCR, SKT HD CAP, RoHS, M5 X 65	93
	-	1	455888-5	SPACER, CRIMPER	82
	-	1	1803607-3	DOCUMENTATION PACKAGE	71
	-	1	2119740-1	TAG, IDENTIFICATION	67
	-	2	2168078-1	SCREW, DRIVE, RH, RoHS, 2 x .188	66
	-	2	2-18032-5	SCR, SET, FLT PNT, M5 X 20.0	61
	-	1	5-18022-5	SCR, HEX HD CAP, M4 X 6.0	59
	-	1	1338685-1	PAWL, FEED	56
	-	2	2168083-3	SCR, SKT HD CAP, RoHS, M4 X 12.0	53
	-	1	1803382-6	HOLD DOWN, SPRING LOADED	50
	-	1	18023-9	SCR, SKT HD CAP M4 X 6.0	49
	-	1	1803602-1	SCR, BHSC, RoHS (M8 X 25)	41
	-	2	2079383-5	SCR, BHSC, RoHS (M4 X 20)	33
	-	2	2844962-2	SPACER, CYLINDRICAL, STRIP GUIDE	30
	-	1	4-2844938-7	PLATE, STRIP GUIDE	29
	-	2	22281-8	SPRING, COMPRESSION	27
	-	1	356835-1	LEVER, DRAG RELEASE	26
	-	1	3-690754-7	DRAG, SPECIAL	25
	-	1	1-1320860-7	STRIP GUIDE, REAR	24
	-	1	980371-4	SCR, SKT HD SHLDR 5.0 DIA X 6.0	23
	-	1	2168083-2	SCR, SKT HD CAP, RoHS, M4 X 8.0	21
	-	8	1-18028-2	WASHER, FLAT, REG M4	20
	-	1	2119533-6	STRIPPER, SIDE FEED	19
	-	1	5-853720-3	BLADE, SLUG	10
	-	1	2844234-2	PLATE, REAR SHEAR	9
	1	1	1633054-7	ANVIL, SPECIAL	8
	-	1	240641-9	SPACER	7
	-	-	-	-	6
	-	-	-	-	5
	-	1	238009-4	BLOCK, FL CRIMPER SPACER	4
	1	1	8-1803016-8	CRIMPER, INSULATION F	3
	-	1	455888-4	SPACER, CRIMPER	2
	1	1	3-1803556-0	CRIMPER, WIRE F	1
	-77	-22	PART NO	DESCRIPTION	ITEM NO

<small>THIS DRAWING IS A CONTROLLED DOCUMENT AND ANY ELECTRICAL INFORMATION SHOULD BE CONFIRMED FOR THE LATEST VERSION.</small>		OWN <b>W. HERR</b> 14SEP2018 CHK <b>U. ELBIN</b> 14SEP2018		 TE Connectivity Harrisburg, PA 17105-3608	
DIMENSIONS:		TOLERANCES UNLESS OTHERWISE SPECIFIED:		NAME	
mm		0 PLC ± 1 PLC ± 2 PLC ± 3 PLC ± ANGLES ± FINISH		Ocean Side Feed Applicator	
		PRODUCT SPEC - APPLICATION SPEC		SIZE CODE DRAWING NO <b>A   00779 C=2837435</b>	
MATERIAL -		WEIGHT -		RESTRICTED TO -	
Customer Accessible Production Drawing				SCALE 1:2 SHEET 3 OF 4 REV B	

SHEETS 1 & 2 ARE NOT REQUIRED FOR PACIFIC VERSION

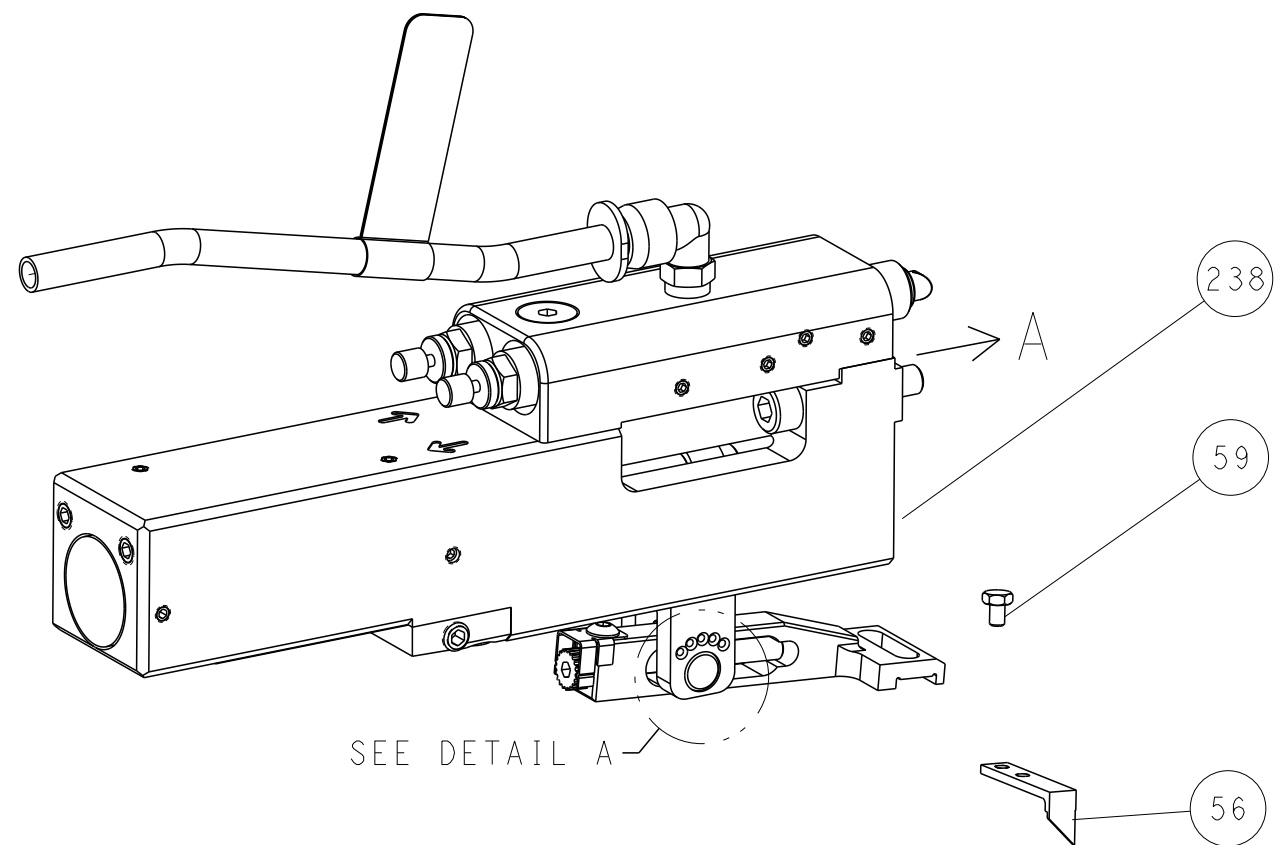
AMP 4805 REV 31MAR2000

PACIFIC VERSION  
Shown on sheets 3 of 4 & 4 of 4  
(Atlantic version shown on sheets 1 of 4 & 2 of 4)

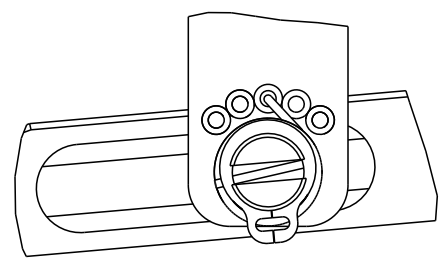
LOC	DIST	REVISIONS					
		P	LTR	DESCRIPTION	DATE	DWN	APVD
A	66	-	-	SEE SHEET 1	-	-	-

FEED TYPE

PNEUMATIC

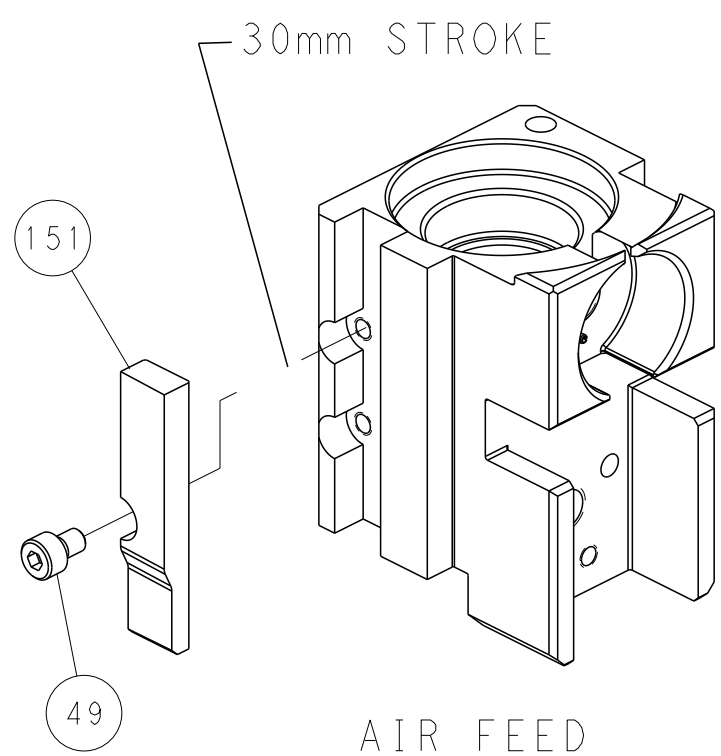


FEED SPRING SETTING POSITION  
(SHOWN FROM REAR SIDE)

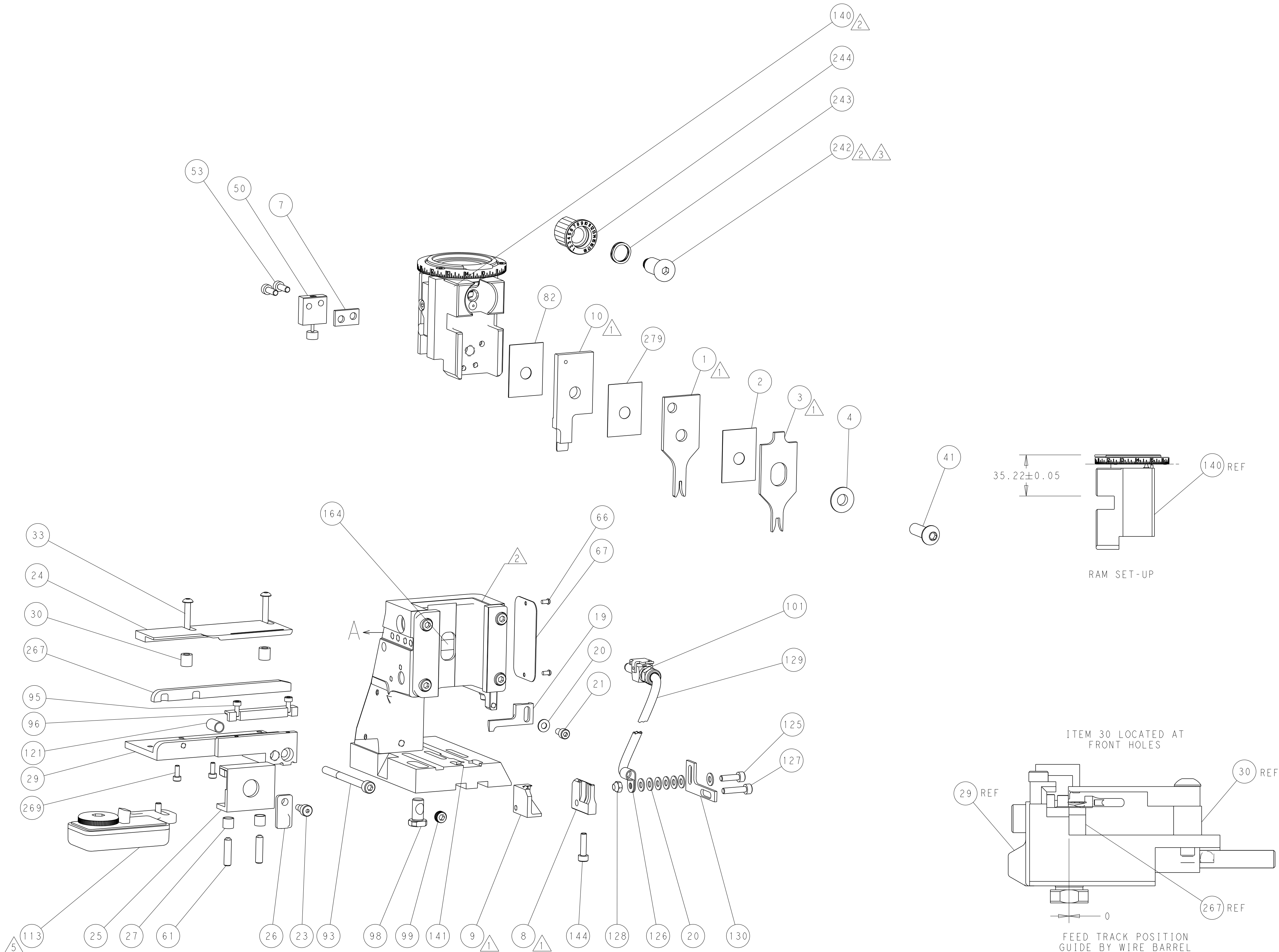


DETAIL A



CAM POSITION



AIR FEED



PACIFIC VERSION  
Shown on sheets 3 of 4 & 4 of 4  
(Atlantic version shown on sheets 1 of 4 & 2 of 4)

THIS DRAWING IS UNPUBLISHED. IT IS SUBJECT TO CHANGE WITHOUT NOTICE. IT IS SUBJECT TO CHANGE WITHOUT NOTICE. IT IS SUBJECT TO CHANGE WITHOUT NOTICE.				DWN	M. HERR	14SEPT2018	 TE Connectivity Harrisburg, PA 17105-3608									
				CHK	T. ELBIN	14SEPT2018										
				APVD	B. BAIR	14SEPT2018										
				PRODUCT SPEC												
DIMENSIONS:				TOLERANCES UNLESS OTHERWISE SPECIFIED:				NAME								
mm																
																
				APPLICATION SPEC				Ocean Side Feed Applicator								
MATERIAL				SIZE			CAGE CODE	DRAWING NO	RESTRICTED TO							
				WEIGHT			A1	00779		C=2837435						
				Customer Accessible Drawing					SCALE	1:2	SHEET	4	OF	4	REV	B