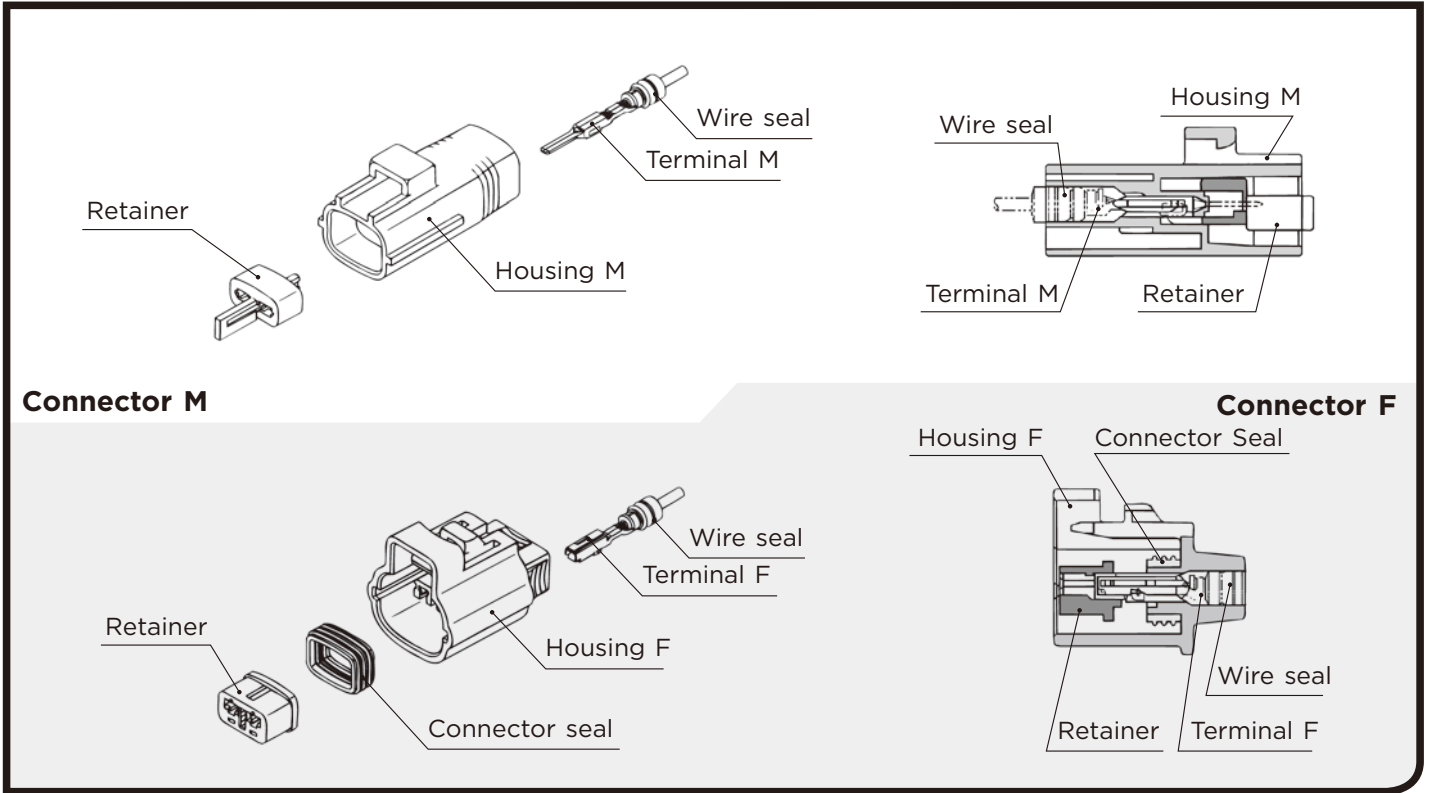


# TS SEALED SERIES for STANDARD

## 2.3mm (090)

Structure / Detecting structure for incomplete terminal insertion.



B-13

TS SEALED SERIES

### 2.3mm (090)

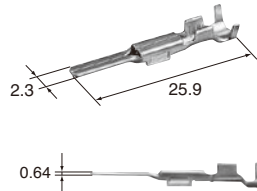
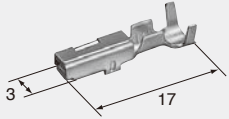
| (E)                         | (J)       |
|-----------------------------|-----------|
| Cable size                  | : 適用電線サイズ |
| Cable overall diameter      | : 電線仕上り外径 |
| Heat-resistant copper alloy | : 耐熱銅合金   |
| Brass                       | : 黄銅      |
| Surface treatment           | : 表面処理    |
| Gold-plated                 | : Auメッキ   |
| Tin-plated                  | : Snメッキ   |

**Terminal** (UNIT : mm)

**(S)**Cable size (mm<sup>2</sup>) 0.3~0.5

Material Brass

Surface treatment Tin-plated

**M (8100-0457)**Cable size (mm<sup>2</sup>) 0.3~0.5

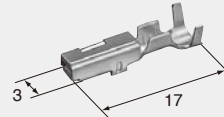
Material Heat-resistant copper alloy

Surface treatment Tin-plated

**F (8100-0460)****(S)****F (8100-3822)**Cable size (mm<sup>2</sup>) 0.3~0.5

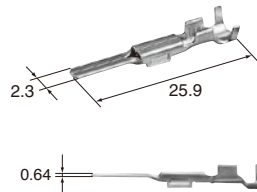
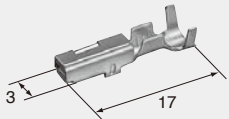
Material Heat-resistant copper alloy

Surface treatment Tin-plated

Note: Please contact to our sales staff for detail.  
詳細は、弊社営業担当にお問い合わせ下さい。**(S)****Au**Cable size (mm<sup>2</sup>) 0.3~0.5

Material Brass

Surface treatment Gold-plated

**M (8100-1340)**Cable size (mm<sup>2</sup>) 0.3~0.5

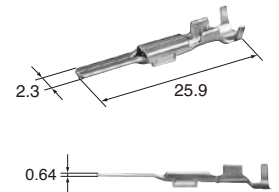
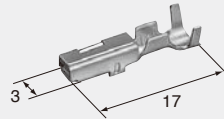
Material Heat-resistant copper alloy

Surface treatment Gold-plated

**F (8100-1344)****(M)**Cable size (mm<sup>2</sup>) 0.5~1.25

Material Brass

Surface treatment Tin-plated

**M (8100-0458)**Cable size (mm<sup>2</sup>) 0.5~1.25

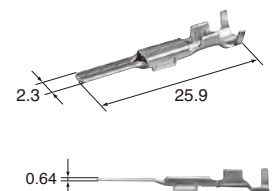
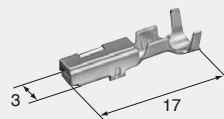
Material Heat-resistant copper alloy

Surface treatment Tin-plated

**F (8100-0461)****(M)****Au**Cable size (mm<sup>2</sup>) 0.5~1.25

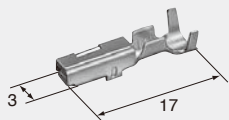
Material Brass

Surface treatment Gold-plated

**M (8100-1007)**Cable size (mm<sup>2</sup>) 0.5~1.25

Material Heat-resistant copper alloy

Surface treatment Gold-plated

**F (8100-0594)****(M)****F (8100-3655)**Cable size (mm<sup>2</sup>) 0.5~1.25

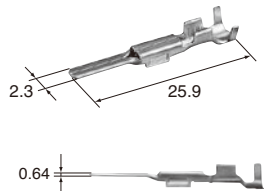
Material Heat-resistant copper alloy

Surface treatment Tin-plated

Note: Please contact to our sales staff for detail.  
詳細は、弊社営業担当にお問い合わせ下さい。

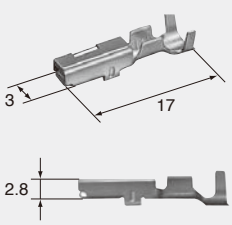
(L)

|                                    |            |
|------------------------------------|------------|
| <b>Cable size (mm<sup>2</sup>)</b> | 2.0        |
| <b>Material</b>                    | Brass      |
| <b>Surface treatment</b>           | Tin-plated |



**M (8100-0459)**

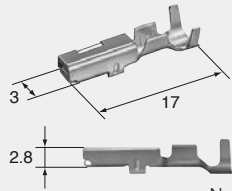
**F (8100-0462)**



|                                    |                             |
|------------------------------------|-----------------------------|
| <b>Cable size (mm<sup>2</sup>)</b> | 2.0                         |
| <b>Material</b>                    | Heat-resistant copper alloy |
| <b>Surface treatment</b>           | Tin-plated                  |

(L)

**F (8240-0157)**



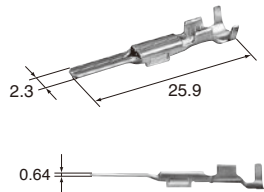
|                                    |                             |
|------------------------------------|-----------------------------|
| <b>Cable size (mm<sup>2</sup>)</b> | 2.0                         |
| <b>Material</b>                    | Heat-resistant copper alloy |
| <b>Surface treatment</b>           | Tin-plated                  |

Note: Please contact to our sales staff for detail.  
詳細は、弊社営業担当にお問い合わせ下さい。

(L)

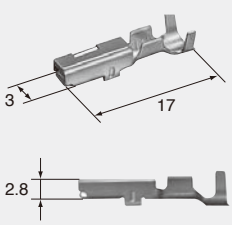
**Au**

|                                    |             |
|------------------------------------|-------------|
| <b>Cable size (mm<sup>2</sup>)</b> | 2.0         |
| <b>Material</b>                    | Brass       |
| <b>Surface treatment</b>           | Gold-plated |



**M (8100-1008)**

**F (8100-0817)**



|                                    |                             |
|------------------------------------|-----------------------------|
| <b>Cable size (mm<sup>2</sup>)</b> | 2.0                         |
| <b>Material</b>                    | Heat-resistant copper alloy |
| <b>Surface treatment</b>           | Gold-plated                 |

## 2.3mm (090)

B-16

### Wire seals (UNIT : mm)

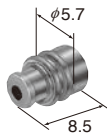
- Male / Female Shared
- P5 : For 5mm pitch housing/Please inquire us for the details.
- P6 : For 6mm pitch housing
- M、F 共用です。
- P5 : 5ミリピッチ用 / 別途お問い合わせください。
- P6 : 6ミリピッチ用

(SS)

(P6)

(7165-0842)

|                               |                  |
|-------------------------------|------------------|
| Cable size (mm <sup>2</sup> ) | (CIVUS/0.35~0.5) |
| Cable overall diameter (mm)   | 1.1~1.4          |
| Material                      | Silicone         |
| Color                         | Blue             |

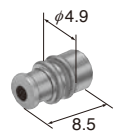


(SS)

(P5)

(7165-1706)

|                               |                  |
|-------------------------------|------------------|
| Cable size (mm <sup>2</sup> ) | (CIVUS/0.35~0.5) |
| Cable overall diameter (mm)   | 1.1~1.4          |
| Material                      | Silicone         |
| Color                         | Violet           |

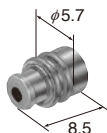


(S)

(P6)

(7165-0349)

|                               |   |
|-------------------------------|---|
| Cable size (mm <sup>2</sup> ) | (AVX·AEX/0.3) (AVS/0.3) (AVSS/0.3~0.85)<br>(AVSSX·AESSX/0.3~0.75) (CAVUS/0.85~1.25) |
| Cable overall diameter (mm)   | 1.4~2.0   |
| Material                      | Silicone  |
| Color                         | Dark Brown  |

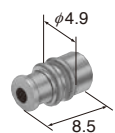


(S)

(P5)

(7165-0342)

|                               |   |
|-------------------------------|---|
| Cable size (mm <sup>2</sup> ) | (AVX·AEX/0.3) (AVS/0.3) (AVSS/0.3~0.85)<br>(AVSSX·AESSX/0.3~0.75) (CAVUS/0.85~1.25) |
| Cable overall diameter (mm)   | 1.4~2.0   |
| Material                      | Silicone  |
| Color                         | Reddish Brown (ベンガラ)  |

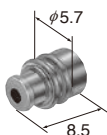


(M)

(P6)

(7165-0395)

|                               |  |
|-------------------------------|--|
| Cable size (mm <sup>2</sup> ) | (AV/0.5) (AVX·AEX/0.5~0.75) (AVS/0.5~0.85)<br>(AVSS/1.25) (AVSSX·AESSX/1.25) |
| Cable overall diameter (mm)   | 2.0~2.5  |
| Material                      | Silicone   |
| Color                         | Dark Green   |

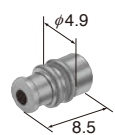


(M)

(P5)

(7165-0343)

|                               |  |
|-------------------------------|--|
| Cable size (mm <sup>2</sup> ) | (AV/0.5) (AVX·AEX/0.5~0.75) (AVS/0.5~0.85)<br>(AVSS/1.25) (AVSSX·AESSX/1.25) |
| Cable overall diameter (mm)   | 2.0~2.5  |
| Material                      | Silicone   |
| Color                         | Black  |

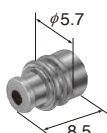


(L)

(P6)

(7165-0351)

|                               |   |
|-------------------------------|---|
| Cable size (mm <sup>2</sup> ) | (AV/1.25) (AVX·AEX/1.25) (AVS/1.25)<br>(AVSS/2.0) (AVSSX·AESSX/2.0) |
| Cable overall diameter (mm)   | 2.5~2.9   |
| Material                      | Silicone  |
| Color                         | Dark Gray   |

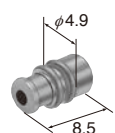


(L)

(P5)

(7165-0344)

|                               |   |
|-------------------------------|---|
| Cable size (mm <sup>2</sup> ) | (AV/1.25) (AVX·AEX/1.25) (AVS/1.25)<br>(AVSS/2.0) (AVSSX·AESSX/2.0) |
| Cable overall diameter (mm)   | 2.5~2.9   |
| Material                      | Silicone  |
| Color                         | Dark Blue   |



## 2.3mm (090)

### Dummy plugs (UNIT : mm)

- Male / Female Shared
- Dummy plugs are used to blind unused terminal holes.
- P5 : For 5mm pitch housing/Please inquire us for the details.
- P6 : For 6mm pitch housing
- M、F 共用です。
- 不必要なターミナル穴を塞ぐために、ダミー栓を使用します。
- P5 : 5ミリピッチ用 / 別途お問い合わせください。
- P6 : 6ミリピッチ用

## 2.3mm (090)

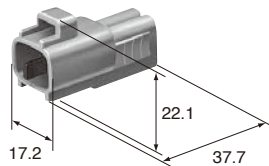
### Housing (UNIT : mm)

|                        |          |
|------------------------|----------|
| Ref: Terminal part No. | B-13     |
| Ref: wire seal No.     | B-16     |
| Ref: Dummy plug No.    | B-17     |
| Material               | PBT/PA6T |

#### 2way

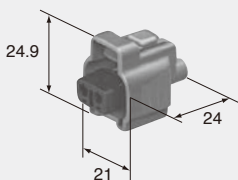
|          |      |
|----------|------|
| Material | PBT  |
| Color    | Gray |

Note: Bracket size 9mm



#### M (6188-0108)

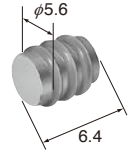
#### F (6189-0199)



|          |      |
|----------|------|
| Material | PBT  |
| Color    | Gray |

#### (P6)

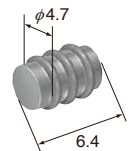
(7160-9465)



|          |       |
|----------|-------|
| Material | NBR   |
| Color    | Black |

#### (P5)

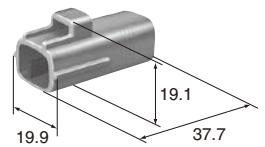
(7161-9787)



|          |       |
|----------|-------|
| Material | NBR   |
| Color    | Brown |

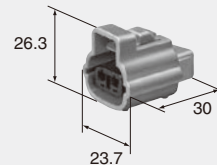
#### 2way

|          |      |
|----------|------|
| Material | PBT  |
| Color    | Gray |



#### M (6188-0047)

#### F (6189-0100)

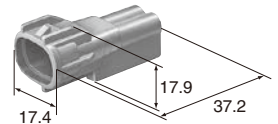


|          |      |
|----------|------|
| Material | PBT  |
| Color    | Gray |

#### 2way

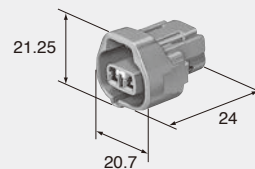
|          |      |
|----------|------|
| Material | PBT  |
| Color    | Gray |

Note: Bracket size 9mm



#### M (6188-0266)

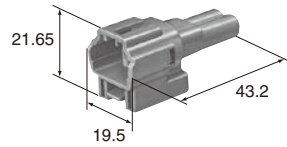
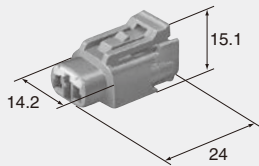
#### F (6189-0249)



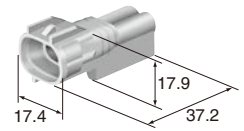
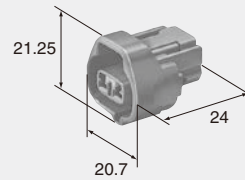
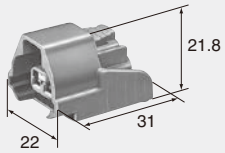
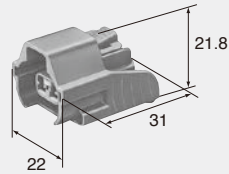
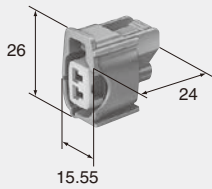
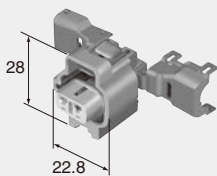
|          |      |
|----------|------|
| Material | PBT  |
| Color    | Gray |

**2way****Material** PBT**Color** Gray

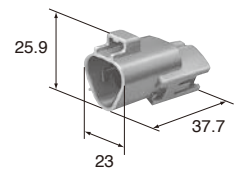
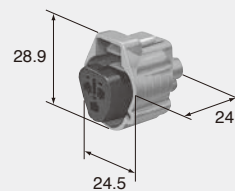
Note:Bracket size 13mm

**M (6188-0229)****Material** PBT**Color** Gray**F (6189-0388)****2way****Material** PBT**Color** Natural

Note:Bracket size 9mm

**M (6188-0624)****Material** PBT**Color** Natural**F (6189-0765)****2way****P5****F (6189-0566)****Material** PBT**Color** Gray**2way****P5****F (6189-0573)****Material** PBT**Color** Gray**2way****P5****F (6189-0611)****Material** PBT**Color** Gray**2way****F (6189-0682)****Material** PBT**Color** Gray**3way (T Type)****Material** PBT**Color** Gray

Note:Bracket size 9mm

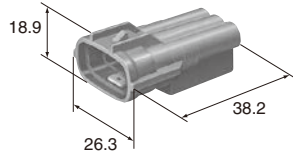
**M (6188-0099)****Material** PBT**Color** Gray**F (6189-0179)**

### 3way (E Type)

Material PBT

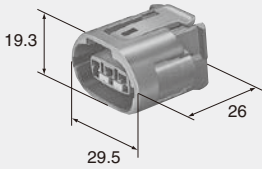
Color Gray

Note:Bracket size 9mm



### M (6188-0282)

### F (6189-0443)

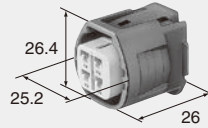


Material PBT

Color Gray

### 4way

### F (6189-0694)

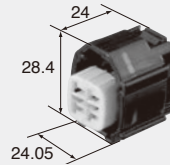


Material PBT

Color Black

### 4way

### F (6189-7398)



Material PA6T

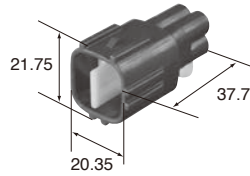
Color Black

### 4way

Material PBT

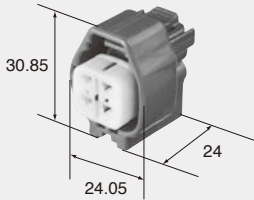
Color Black

Note:Bracket size 9mm



### M (6188-0517)

### F (6189-0581)



Material PBT

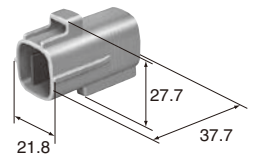
Color Black

### 4way

Material PBT

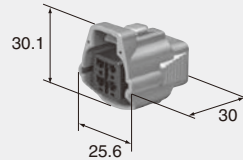
Color Gray

Note:Bracket size 9mm



### M (6188-0066)

### F (6189-0126)



Material PBT

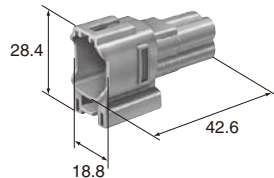
Color Gray

### 4way

Material PBT

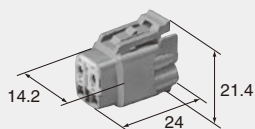
Color Gray

Note:Bracket size 13mm



### M (6188-0141)

### F (6189-0381)



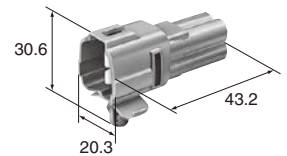
Material PBT

Color Gray

### 4way

Material PBT

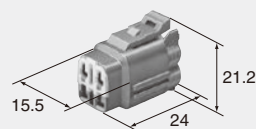
Color Gray



NOTE : With clip for oval hole.  
Plate thickness range for clamp:  
t=0.7~2.2

### M (6188-0217)

### F (6189-0372)

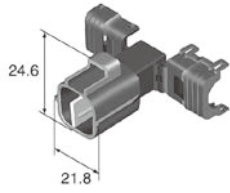


Material PBT

Color Gray

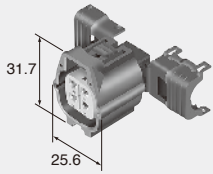
### 4way

|          |      |
|----------|------|
| Material | PBT  |
| Color    | Gray |



**M (6188-0472)**

**F (6189-0685)**



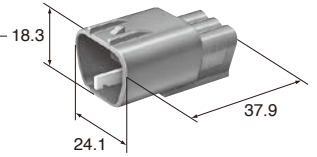
Note: Bracket size 9mm

|          |      |
|----------|------|
| Material | PBT  |
| Color    | Gray |

### 5way

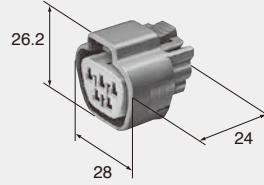
|          |      |
|----------|------|
| Material | PBT  |
| Color    | Gray |

Note: Bracket size 9mm



**M (6188-0327)**

**F (6189-0504)**

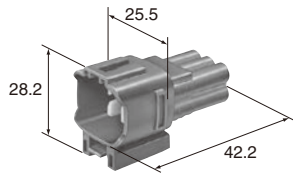


|          |      |
|----------|------|
| Material | PBT  |
| Color    | Gray |

### 6way

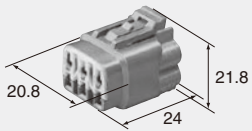
|          |      |
|----------|------|
| Material | PBT  |
| Color    | Gray |

Note: Bracket size 13mm



**M (6188-0173)**

**F (6189-0319)**

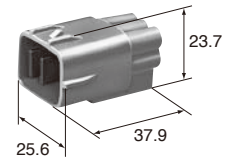


|          |      |
|----------|------|
| Material | PBT  |
| Color    | Gray |

### 6way

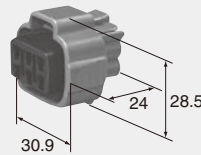
|          |      |
|----------|------|
| Material | PBT  |
| Color    | Gray |

Note: Bracket size 9mm



**M (6188-0175)**

**F (6189-0323)**

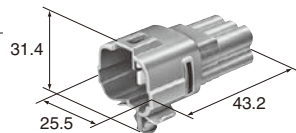


|          |      |
|----------|------|
| Material | PBT  |
| Color    | Gray |

### 6way

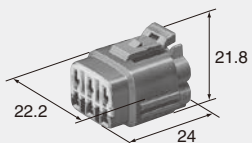
|          |      |
|----------|------|
| Material | PBT  |
| Color    | Gray |

NOTE : With clip for oval hole.  
Plate thickness range for clamp:  
t=0.7~2.2



**M (6188-0209)**

**F (6189-0368)**

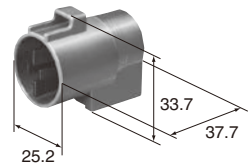


|          |      |
|----------|------|
| Material | PBT  |
| Color    | Gray |

### 7way

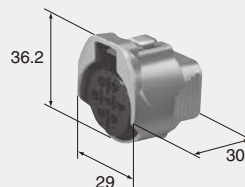
|          |      |
|----------|------|
| Material | PBT  |
| Color    | Gray |

Note: Bracket size 17mm



**M (6188-0067)**

**F (6189-0127)**



|          |      |
|----------|------|
| Material | PBT  |
| Color    | Gray |