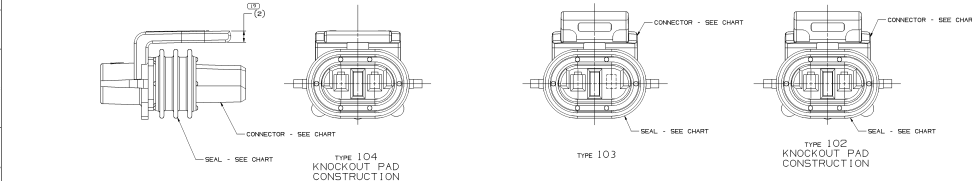


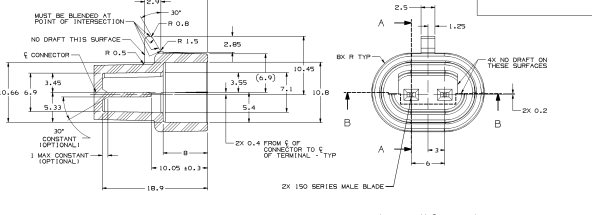
**MATERIAL SPECIFICATIONS**

- RECOMMENDED:**  
 BASE METAL - COP-210, EXTRA SPRING TEMPER  
 TIN PLATING (WHERE APPLICABLE TO LONG MAX CONTINUOUS USAGE) - GROUNDING CONTACTS AND 1000/100 AFIN ELECTRIFIED TIN.  
 USAGE OF PLATING TYPES OTHER THAN RECOMMENDED MUST BE APPROVED BY DELPHI PACKARD ELECTRIC SYSTEMS ENGINEERING.
- MINIMUMS:**  
 ELECTRICAL CONDUCTIVITY - JARS 1405 AT 20 °C. USE OF A MATERIAL WITH CONDUCTIVITY > 100% LOWER MUST BE APPROVED BY PACKARD ELECTRIC MATERIALS ENGINEERING.  
 TENSILE STRENGTH - 430 - 480 MPa  
 UNDERPLATING FOR TIN PLATING - FOR BASE MATERIALS CONTAINING 10% OR MORE ZINC, AN UNDERPLATE OF COPPER COATED AN 100 AFIN MINIMUM THICK IS REQUIRED.  
 PROCESSING LUBRICANT - ANY PROCESSING LUBRICANT REMAINING ON TERMINALS MUST NOT INTERFERE OR DEGRADE THE ELECTRICAL PERFORMANCE OF THE TERMINAL. PROCESSING LUBRICANTS MUST BE APPROVED BY DELPHI PACKARD ELECTRIC SYSTEMS ENGINEERING.

**MATING BLADE INFORMATION**



**MATING CONNECTOR INFORMATION**

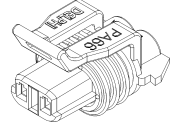


- NOTES:**  
 1. ALL RADIUS 0.4, UNLESS OTHERWISE SPECIFIED  
 2. RECOMMENDED MATERIAL - GLASS FILLED NYLON OR POLYESTER  
 3. WHEN USING THIS INFORMATION FOR A NEW DESIGN, REVIEW THE LATEST EDITION OF THIS PRINT FROM DELPHI PACKARD ELECTRIC

- NOTES:**  
 1. UNLESS OTHERWISE SPECIFIED AND/OR INDICATED: DIMENSIONS ARE TO FACE OF TERRY SURFACES. AUTOMATICALLY FINISHED BY COMPUTER FOR INSPECTION. USE WITH MODEL FOR PRECISION CONSIDERATION FOR TOOL BUILD. SEE MATH MODEL FOR PRECISE TOOL PATH DATA.  
 2. WHEN PARTS ARE SHIPPED, THEY MUST BE INSURED IN PLASTIC BAGS OR SHIPPING CONTAINERS THAT ARE USED WITH POLYESTER LABELS. BAGS OR LINERS MUST BE SEALED TO PROTECT FROM FOREIGN MATTER.  
 3. SEALING CODE 3 - DESIGN WILL PASS SALT FOG AND IMMERSION TEST AFTER COMPLETION OF INSPECTION IN TEST AND REPAIR ROOMS AS PER MIL-STD-2000.10.10.1. EQUALLY PROTECTIVE MEASURES SHOULD BE TAKEN WHEN MATED TO ANY OTHER CONNECTOR, ETC WHEN MATED TO ANY LINE PART OR EQUIVALENT.  
 4. FOR APPLICATION DATA SEE THE INDIVIDUAL APPLICATION DRAWINGS.  
 5. THIS PRODUCT IS NOT CATEGORIZED AS AN APPEARANCE ITEM. MINOR DIMENSIONAL DEFICIENCIES THAT DO NOT AFFECT THE FIT, FORM, OR FUNCTION OF THE PART ARE PERMISSIBLE PER DRAW-47-05-01.  
 6. FOR PART NUMBER WITH ADHESIVE, USE 44050001 OR ADHESIVE APPROVED BY MATERIALS ENGINEERING TO GLUE CONNECTOR SEAL TO CONNECTOR.  
 7. 19510174 - USE 10 IN WHEN 100K SEALS OR 6 AMP LAMP. AT 1011 CONCENTRATION FOR ASSEMBLY OF DOWN SEAL.

DELPHI PART NUMBER  
**12089588**  
 12089588 12089588 12089588 12089588

12186866	AX	12089588	C2	2	1	12089588	LF	BRV
12186866	AX	12089588	C2	2	1	12089588	LF	BRV
12186866	AX	12089588	C2	2	1	12089588	LF	BRV
12186866	AX	12089588	C2	2	1	12089588	LF	BRV
12186866	AX	12089588	C2	2	1	12089588	LF	BRV
12186866	AX	12089588	C2	2	1	12089588	LF	BRV
12186866	AX	12089588	C2	2	1	12089588	LF	BRV
12186866	AX	12089588	C2	2	1	12089588	LF	BRV



**SYMBOL DEFINITION**

OR SYMBOL	OR SYMBOL	OR SYMBOL	OR SYMBOL
101	103	104	104
101	103	104	104

CHECKED BY	DATE	REVISION HISTORY
101	103	104
101	103	104
101	103	104
101	103	104

**DELPHI**  
 PACKARD ELECTRIC SYSTEMS ENGINEERING

REVISION HISTORY

12089588

12089588 12089588 12089588

882798051 15082828