

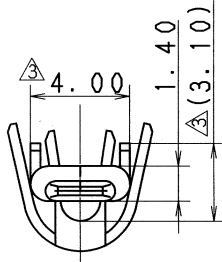
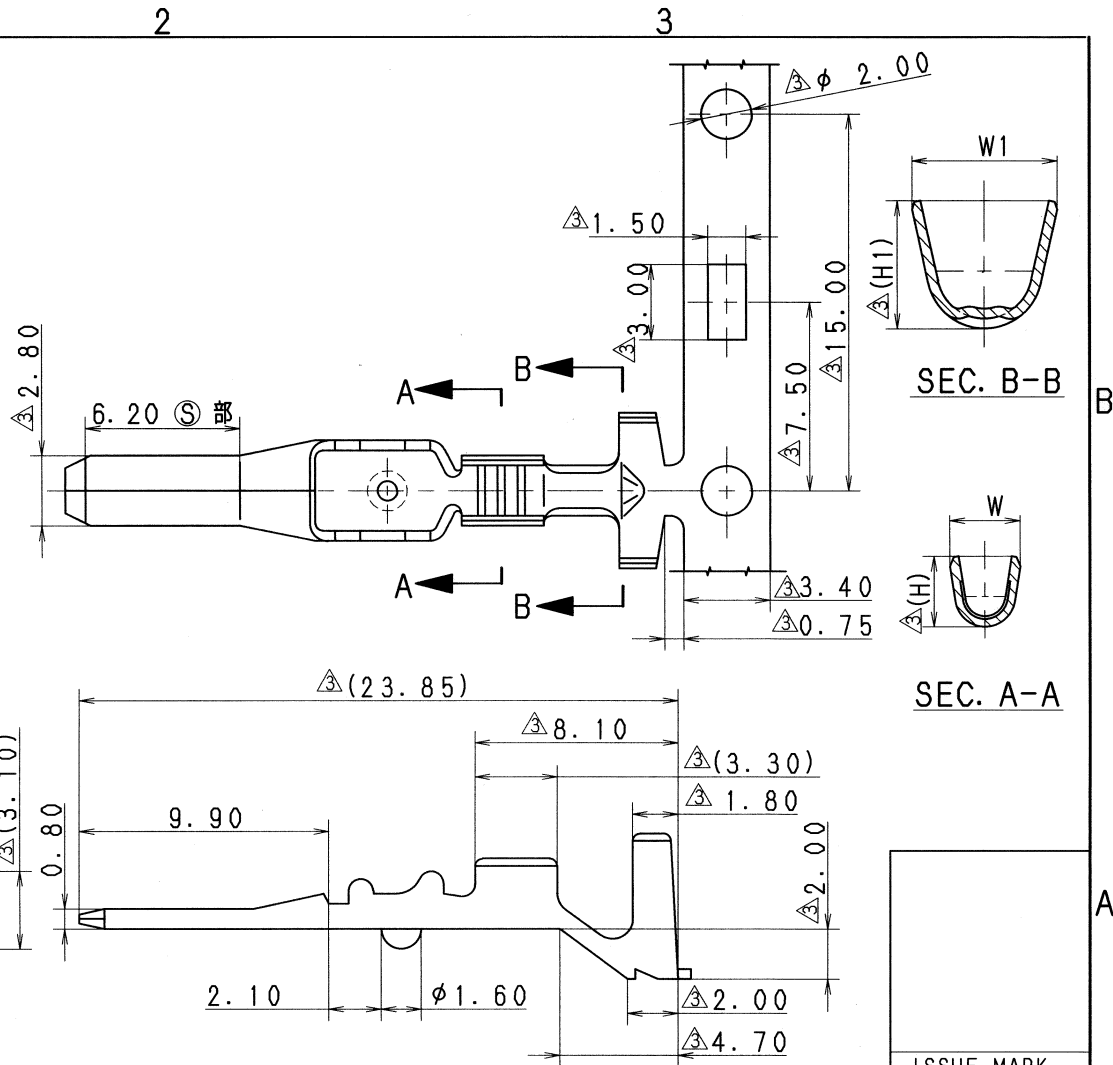
PART NO. AND CH. CODE	WIRE SIZE	W <sub>i</sub>	△H <sub>i</sub>	W	△H	TREAT. & FIN.
7114-1232	0.3~0.85	5.80	5.10	2.80	2.80	TIN PLATING
7114-1233	1.25~2	6.00	5.60	3.40	4.00	TIN PLATING
7114-1232-08	0.3~0.85	5.80	5.10	2.80	2.80	GOLD PLATING
7114-1233-08	1.25~2	6.00	5.60	3.40	4.00	GOLD PLATING

注記

- △1. Auめっき範囲は ⑤ 部とする。  
(7114-1232-08, -1233-08)
- △2. かん合相手品番 : 7116-1232, 7116-1232-08  
7116-1233, 7116-1233-08  
7116-1236, 7116-1237
- △3. 通用ゴム栓品番 : 7157-3560, 7157-3563-60  
7157-3561-80, 7157-3564-90, 7157-3565-50  
7157-3652-70, 7157-3566-40, 7157-3653-61

△NOTES

- 1. AREA ⑤ SHALL BE GOLD PLATED.  
(7114-1232-08, -1233-08)
- 2. MATING PART NO. : 7116-1232, 7116-1232-08  
7116-1233, 7116-1233-08  
7116-1236, 7116-1237
- 3. APPLICABLE RUBBER SEAL PART NO. :  
7157-3560, 7157-3563-60, 7157-3561-80  
7157-3564-90, 7157-3565-50, 7157-3652-70  
7157-3566-40, 7157-3653-61



△	06/08/30	UPDATED DRAWING, ETC.	C06-Z921	M. A			
△	96/08/07	CORRECTION OF CLERICAL ERROR	C96-6852	小林			
△	92/10/21	CORRECTION OF CLERICAL ERROR	C92-7070	甲斐			
	88/01/20	DRAWING REPLACEMENT & ADDED PART NO.	8MC-0125	鈴掛			
LET	DATE	REVISION RECORD	NO.	CHKD			
GENERAL TOLERANCE							
	10MAX	50MAX	100MAX	250MAX	2500VR	ANGLE	ECCENT
A	±0.15	±0.2	±0.3	±0.5	±0.75	±30'	0.1
B	±0.2	±0.3	±0.55	±0.95	±1.4	±30'	0.1
⑤	±0.3	±0.5	±0.8	±1.4	±2	±30'	0.15
SPECIFIED				MASS	g		

CUSTOMER		MATL. SPEC.	△ BRASS (t=0.4)	TREAT. & FIN.	SEE TABLE	
CUSTOMER PART NO.		CUSTOMER DWG NO.		NAME		
OFFICE		TRIAL PART NO.		W TYPE TERMINAL (M)		
VENDOR		VENDOR NO.		PART NO. 7114-1232 ETC.		
DWG TYPE		DWG SOURCE	DWG DATE	UNIT	SCL	ANGLE
R		NEW	88/01/20	mm	5:1	3
APPROVED	CHECKED	CHECKED	DESIGN	DRAWN		DWG NO. 7114-1232:R
杉山	若塚	秋山	SAKAI	L. SYLUANCIA		SET DWG NO.
06.08.30	06.08.30	06/08/30	84/06/27	06/08/30		YAZAKI CORPORATION