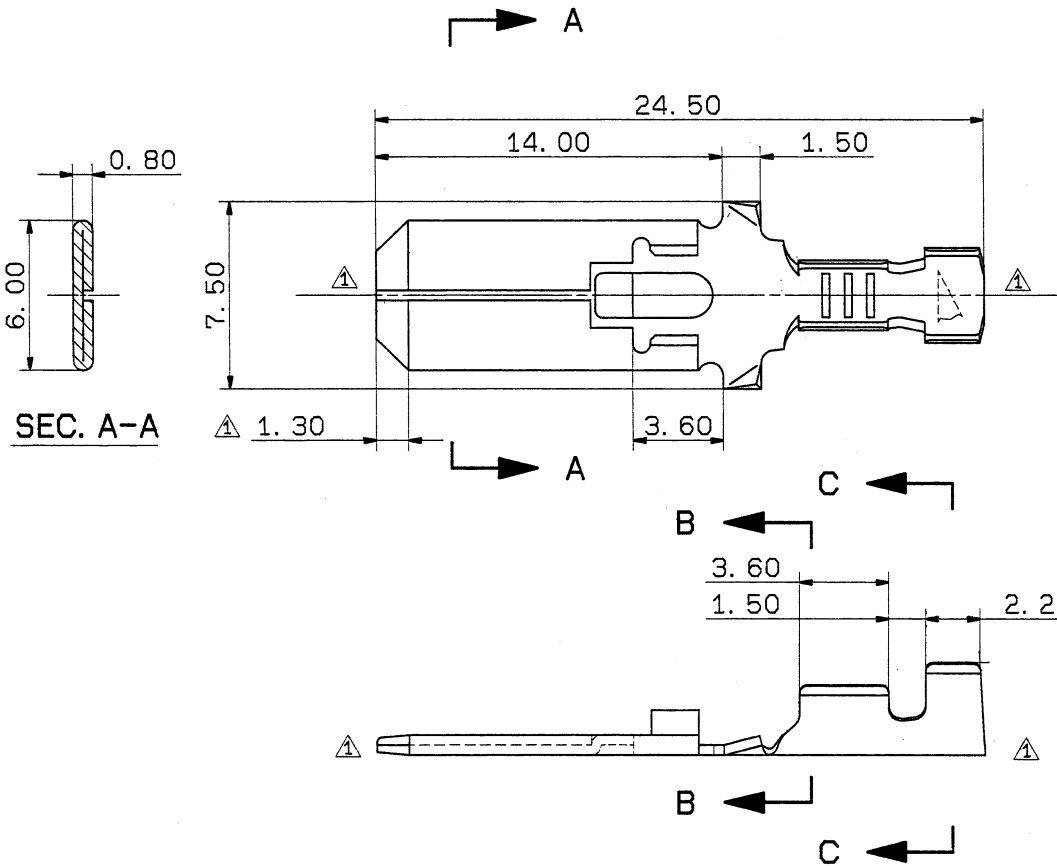


1

2

3

△	PART NO.	WIRE SIZE	PLATING
	7114-2250	AVS 0.3~0.5	NONE
	7114-2250-02	AVS 0.3~0.5	TIN

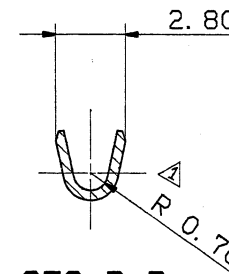


△ 注記

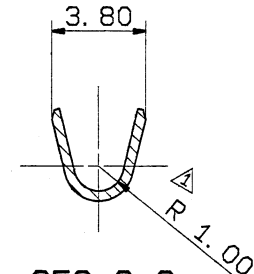
1) 嵌合相手品番: 7116-2640 ETC.

NOTE

1) MATING PART NO.: 7116-2640 ETC.



SEC. B-B



SEC. C-C

ISSUE MARK

										CUSTOMER				MATL. SPEC. C2680R t=0.4		TREAT. & FIN.	
										CUSTOMER PART NO.				CUSTOMER DWG NO.			
△	94.09.26	RENEW AND ADD DIMENTION			C94-M433	T. K					NAME 250 TERMINAL MALE						
	88.04.14	NEW			BMC-0448	M. H	OFFICE				TRIAL PART NO.						
LET	DATE	REVISION RECORD			NO.	CHKD	VENDOR				FOR HOUSING LANCE CONNECTOR						
GENERAL TOLERANCE							VENDOR NO.							PART NO. 7114-2250 ETC.			
	10MAX	50MAX	100MAX	250MAX	250OVR	ANGLE	ECCENT	DWG TYPE	DWG SOURCE	DWG DATE	UNIT	SCL	ANGLE	CH. CODE			
A	±0.15	±0.2	±0.3	±0.5	±0.75	±30°	0.1	R	NEW	94.09.26	mm	5/1	3	7114-2250:R			
B	±0.2	±0.3	±0.55	±0.95	±1.4	±30°	0.1	APPROVED	CHECKED	CHECKED	DESIGN	DRAWN		DWG NO.			
©	±0.3	±0.5	±0.8	±1.4	±2	±30°	0.15	<i>m, Endo</i>			YAMAGATA	SHINDOH		7114-2250:R			
SPECIFIED							MASS							YAZAKI CORPORATION			
							g							80.06.18 94.09.26			
							94.9.29. 94.09.29										

1

2

3