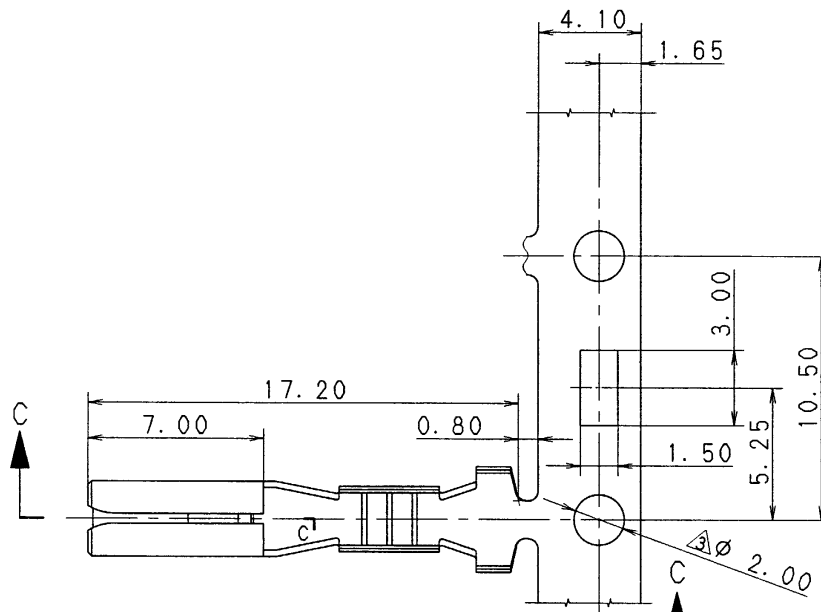


1

2

3

YAZAKI PART NO.	W ₁	W ₂	△R ₁	△R ₂	WIRE SIZE
7116-1180	2.10	3.70	0.30	0.95	AVS 0.2~0.5
△(7B16-1180)					EQUIVALENT
7116-1181	3.70	4.20	0.70	1.30	AVS 0.85~1.25
△(7B16-1181)					EQUIVALENT

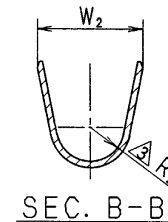
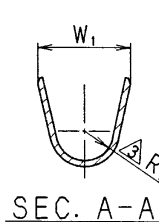
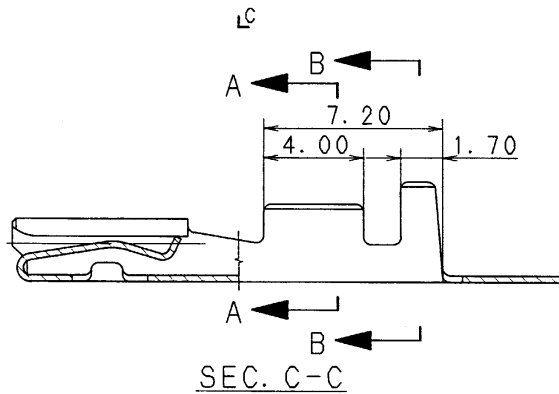
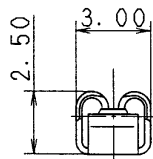


注記

③ 1. () 内品番は、A/B回路及び特別管理回路に使用する時に適用すること。

NOTE

③ 1. () PART NO. IS USED FOR PARTS ASSOCIATED WITH A/B CIRCUITS OR OTHER SPECIFIED CIRCUIT.



ISSUE MARK

③ 97.02.19	ADDED A/B PART NO.	C97-L247	H. K	CUSTOMER		MATL.	BRASS (t=0.25)	TREAT.						
② 89.02.21	CHANGED NOTE	C89-6278	K. M	CUSTOMER PART NO.	CUSTOMER DWG NO.	SPEC.	(TIN PLATING)	& FIN.						
① 86.04.30	CHANGED FORM & RENEW	C86-5493	T. M			NAME	090 TERMINAL FEMALE							
85.02.26	NEW	C85-5204	T. Y	OFFICE	TRIAL PART NO.									
LET	DATE	REVISION RECORD	NO.	CHKD	VENDOR									
GENERAL TOLERANCE					VENDOR NO.									
	10MAX	50MAX	100MAX	250MAX	250OVR	ANGLE	ECCENT	DWG TYPE	DWG SOURCE	DWG DATE	UNIT	SCL	ANGLE	PART NO.
A	±0.15	±0.2	±0.3	±0.5	±0.75	±30'	0.1	R	NEW	85.02.26	mm	△5/1	3	△7116-1180 ETC. (7B16-1180 ETC.)
B	±0.2	±0.3	±0.55	±0.95	±1.4	±30'	0.1	APPROVED	CHECKED	CHECKED	DESIGN	DRAWN		DWG NO. 7116-1180:R
©	±0.3	±0.5	±0.8	±1.4	±2	±30'	0.15				KANEKO	AKIMOTO		SET DWG NO.
SPECIFIED					MASS					YAZAKI CORPORATION				

1

2

3