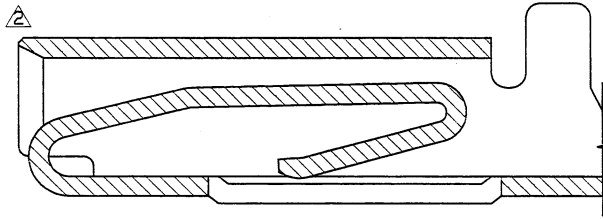


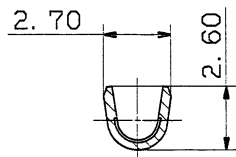
1

2

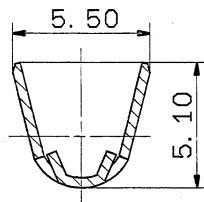
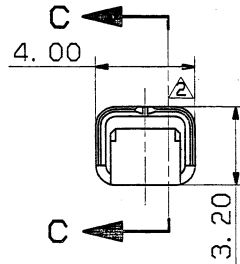
3



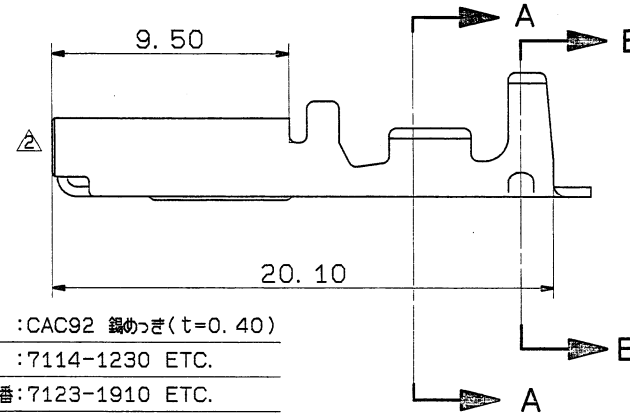
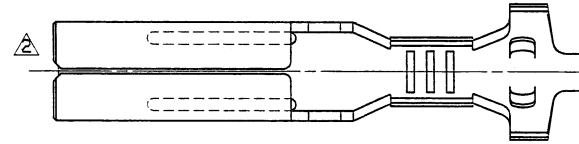
SEC. C-C(10/1)



SEC. A-A



SEC. B-B



注記

- 1)材料 :CAC92 錫めっき(t=0.40)  
 2)嵌合相手品番 :7114-1230 ETC.  
 3)適用ハウジング品番:7123-1910 ETC.  
 4)適用電線サイズ :AVS 0.3~AV(AVS)0.5

NOTES

- 1)MATERIAL :CAC92 TIN PLATING(t=0.40)  
 2)MATING PART NO. :7114-1230 ETC.  
 3)APPLICABLE HOUSING PART NO. :7123-1910 ETC.  
 4)APPLICABLE WIRE SIZE :AVS 0.3~AV(AVS)0.5

ISSUE MARK

95.06.02	CHANGED FORM, A	C95-L783	H. K	CUSTOMER	MATL. SPEC.	NOTE 1)	TREAT. & FIN.	NOTE 1)						
89.07.12	CHANGED	C89-7103	H. I	CUSTOMER PART NO.	CUSTOMER DWG NO.									
87.03.12	COMPOSITION NEW	7MC-0122	S. K	OFFICE	TRIAL PART NO.	NAME	T TYPE TERMINAL (F)							
LET	DATE	REVISION RECORD NO.	CHKD	VENDOR										
GENERAL TOLERANCE				VENDOR NO.										
	10MAX	50MAX	100MAX	250MAX	250OVR	ANGLE	ECCENT	DWG TYPE	DWG SOURCE	DWG DATE	UNIT	SCL	ANGLE	PART NO.
A	±0.15	±0.2	±0.3	±0.5	±0.75	±30'	0.1	R	NEW	87.03.12	mm	5/1	3	7116-1244, A
B	±0.2	±0.3	±0.55	±0.95	±1.4	±30'	0.1	APPROVED	CHECKED	CHECKED	DESIGN	DRAWN		DWG NO.
©	±0.3	±0.5	±0.8	±1.4	±2	±30'	0.15	ハ木		永野	S. KOZONO	KOSAKA		7116-1244:R
SPECIFIED				MASS	g			87.6.6		95.6.6	87.03.12	95.6.6		YAZAKI CORPORATION

1

2

3