

PART NO. AND CH. CODE	W ₁	W ₂	H ₁	H ₂	R ₁	R ₂	△(REFERENCE) WIRE SIZE (mm ²)
7116-4100-02	2.30	2.80	(2.30)	(3.50)	0.45	0.45	△0.3~0.5 EQUIVALENT
7116-4101-02	3.00	3.40	△(2.95)	(4.10)	0.65	0.65	△0.6~1.25, 0.35+0.35, 0.35+0.5 EQUIVALENT
7116-4104-02	△3.10	3.70	△(3.15)	(4.60)	0.65	0.65	△0.35+0.75, 0.5+0.5 1.5 EQUIVALENT

△GENERAL TOLERANCE

	10MAX	50MAX	100MAX	250MAX	250OVR	R5MAX	R10MAX	R20MAX	R20OVR	ANGLE	ECCENT
A	±0.15	±0.2	±0.3	±0.5	±0.75					±3°	0.1
B	±0.2	±0.3	±0.55	±0.95	±1.4	±0.2	±0.3	±0.5	±2.5	±3°	0.1
(C)	±0.3	±0.5	±0.8	±1.4	±2					±3°	0.15

注記

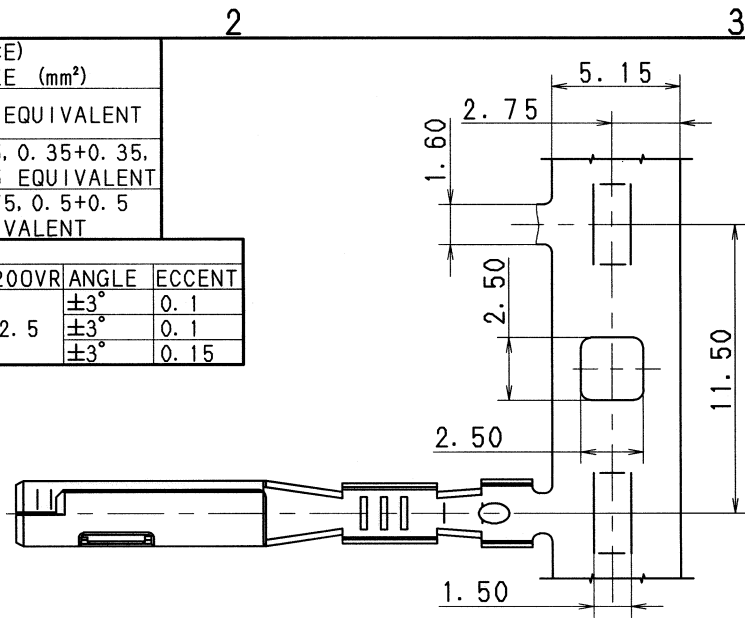
1. 嵌合雄ターミナル品番： 7114-4100-02 ETC.

△△2. 7116-4104-02における通電電流値は、1.0 mm²相当以下とする。

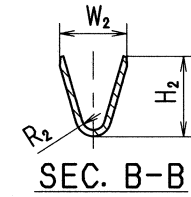
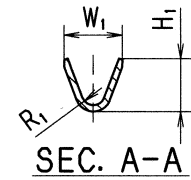
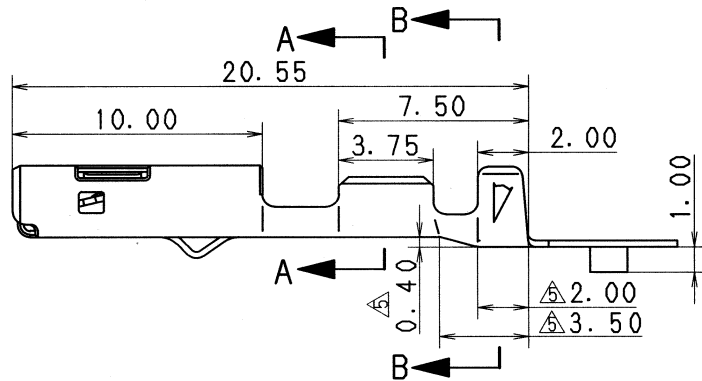
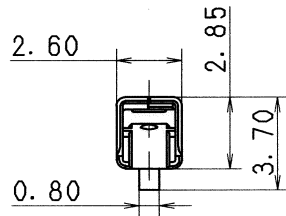
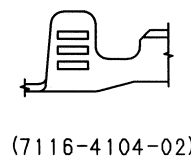
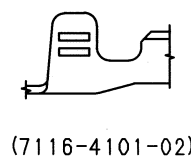
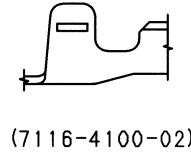
NOTES

1. MATING TERMINAL No. : 7114-4100-02 ETC.

△△2. CURRENT FOR 7116-4104-02 SHALL BE THE CURRENT FOR 1.0 mm² WIRE OR LESS.



APPLICABLE WIRE SIZE MARK



ISSUE MARK

△	05/10/18	CHANGED GENERAL TOLERANCE TABLE, ETC.	C05-ZD51	Y. W
△	04/04/19	CHANGED WIRE SIZE	C04-X190	K. O
△	03/07/10	CHANGED WIRE SIZE & NOTE	C03-X450	K. O
△	99/06/15	ADDED NOTE	C99-L932	H. O
△	98/12/22	CHANGED DIMENSION & WIRE SIZE	C98-M210	N. S
	95/09/06	NEW	C95-M059	Y. W
LET	DATE	REVISION RECORD	NO.	CHKD

CUSTOMER		MATL. SPEC.	COPPER ALLOY (t=0.25)	TREAT. & FIN.	TIN PLATING
CUSTOMER PART NO.		CUSTOMER DWG NO.		NAME	
OFFICE		TRIAL PART NO.		1.5 SYSTEM CONNECTOR	
VENDOR		FEMALE TERMINAL			
VENDOR NO.		PART NO. CH. CODE			

VENDOR NO.		PART NO. CH. CODE		SET DWG NO.	
DWG TYPE		DWG SOURCE	DWG DATE	UNIT	SCL
R		NEW	95/09/06	mm	5:1
APPROVED	CHECKED	CHECKED	DESIGN	DRAWN	
			K. OHTAKA	O. DAR	
SPECIFIED		YAZAKI CORPORATION			

	10MAX	50MAX	100MAX	250MAX	250OVR	ANGLE	ECCENT
A	±0.15	±0.2	±0.3	±0.5	±0.75	±30'	0.1
B	±0.2	±0.3	±0.55	±0.95	±1.4	±30'	0.1
C	±0.3	±0.5	±0.8	±1.4	±2	±30'	0.15

DWG TYPE	DWG SOURCE	DWG DATE	UNIT	SCL	ANGLE
R	NEW	95/09/06	mm	5:1	3
APPROVED	CHECKED	CHECKED	DESIGN	DRAWN	
			K. OHTAKA	O. DAR	
SPECIFIED		YAZAKI CORPORATION			

PART NO. CH. CODE		7116-4100-02 ETC.		SET DWG NO.	
DWG NO.		7116-4100-02:R			
SPECIFIED		YAZAKI CORPORATION			

PART NO. AND CH. CODE	W ₁	W ₂	H ₁	H ₂	R ₁	R ₂	△(REFERENCE) WIRE SIZE (mm ²)
7116-4100-08, ㊦	2.30	2.80	(2.30)	(3.50)	0.45	0.45	△0.3~0.5 EQUIVALENT
7116-4101-08, ㊦	3.00	3.40	△(2.95)	(4.10)	0.65	0.65	△0.6~1.25 EQUIVALENT

△GENERAL TOLERANCE											
	10MAX	50MAX	100MAX	250MAX	250OVR	R5MAX	R10MAX	R20MAX	R20OVR	ANGLE	ECCENT
A	±0.15	±0.2	±0.3	±0.5	±0.75					±3°	0.1
B	±0.2	±0.3	±0.55	±0.95	±1.4	±0.2	±0.3	±0.5	±2.5	±3°	0.1
(C)	±0.3	±0.5	±0.8	±1.4	±2					±3°	0.15

注記

1. 嵌合雄ターミナル品番 : 7114-4100-08 ETC.

△2. 材質 : 銅合金 t=0.25 (金めっき, スズめっき)

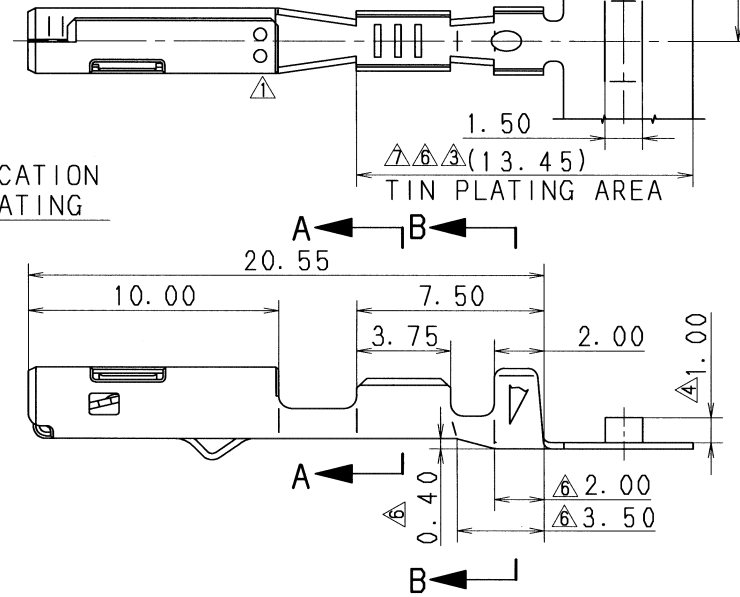
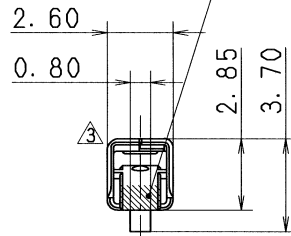
NOTES

1. MATING TERMINAL NO. : 7114-4100-08 ETC.

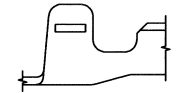
△2. MATERIAL : COPPER ALLOY. t=0.25

(GOLD PLATING, TIN PLATING)

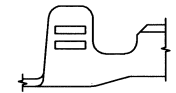
IDENTIFICATION GOLD PLATING



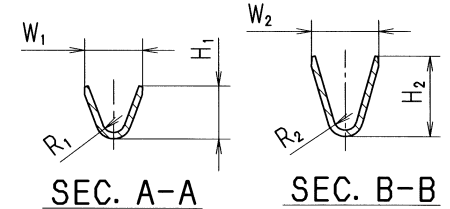
APPLICABLE WIRE SIZE MARK



(7116-4100-08)



(7116-4101-08)



△	08/07/04	CHANGED DIMENSION	C08-Z468	T. Y
△	05/10/18	DELETED SOLDER PLATING INSTRUCTION, ETC.	C05-ZD51	Y. W
△	04/04/19	CHANGED WIRE SIZE	C04-X190	K. O
△	03/12/23	CORRECT MISENTRY	C04-P010	M. H
△	03/09/19	CHANGED FORM, NOTE & WIRE SIZE, ㊦	C03-X584	H. T
△	99/06/25	CORRECT ALL ERRORS, ㊦	C99-L932	H. O
△	98/12/22	CHANGED DIMENSION & ADDED STAMP TO DISCRIMINATE THE GOLD PLATING	C98-M597	N. S
△	95/09/06	NEW	C98-M061	Y. W
LET	DATE	REVISION RECORD	NO.	CHKD

GENERAL TOLERANCE

	10MAX	50MAX	100MAX	250MAX	250OVR	ANGLE	ECCENT	
A	±0.15	±0.2	±0.3	±0.5	±0.75	±30'	0.1	
B	±0.2	±0.3	±0.55	±0.95	±1.4	±30'	0.1	
C	±0.3	±0.5	±0.8	±1.4	±2	±30'	0.15	
SPECIFIED							MASS	g

CUSTOMER		MATT. SPEC.		TREAT. & FIN.	
CUSTOMER PART NO.	CUSTOMER DWG NO.	SEE NOTES			
OFFICE	TRIAL PART NO.	NAME 1.5 SYSTEM CONNECTOR FEMALE			
VENDOR	VENDOR NO.	TERMINAL (GOLD PLATING)			
DWG TYPE	DWG SOURCE	DWG DATE	UNIT	SCL	ANGLE
R	NEW	95/09/06	mm	5:1	3
APPROVED	CHECKED	CHECKED	DESIGN	DRAWN	
杉山(調)		山本	K. OHTAKA	J. GALLARES	
28.07.07		08.07.04	95/05/29	08/07/04	

PART NO. CH. CODE	7116-4100-08 ETC.	
DWG NO.	7116-4100-08:R	SET DWG NO.
YAZAKI CORPORATION		

ISSUE MARK

1

2

3