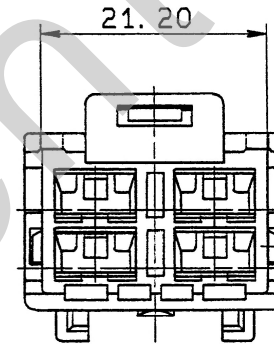
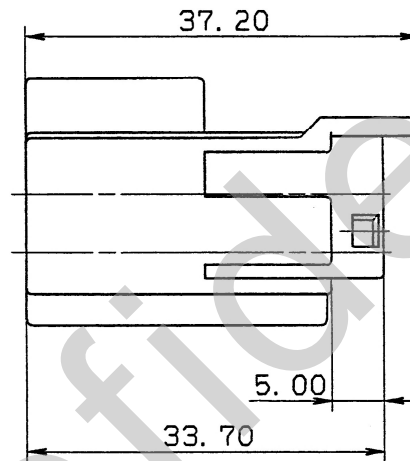
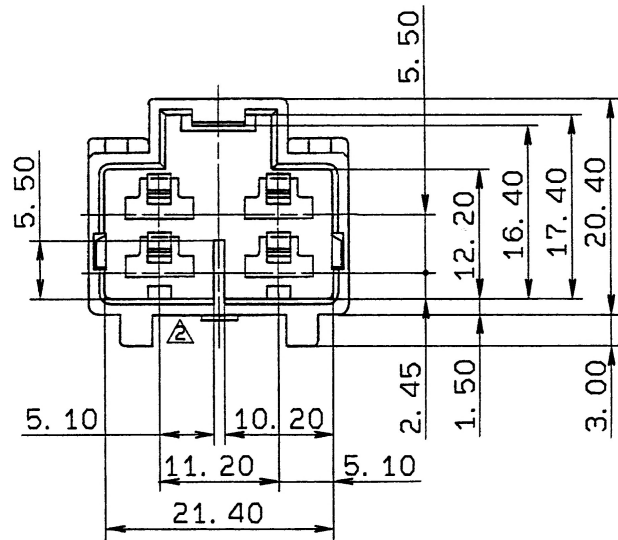
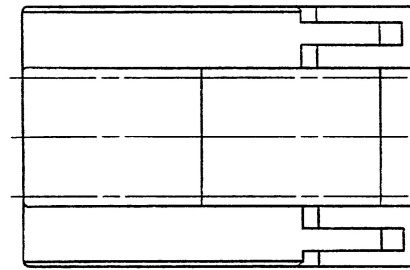


注記

- 1) 適用オスターミナル品番 : 7114-2870 ETC.
- 2) 嵌合メスハウジング品番 : 7123-6043-30
- 3) 適用リアホルダ品番 : 7157-6241-40

△ NOTES

- 1) APPLICABLE MALE TERMINAL NO. : 7114-2870 ETC.
- 2) MATING FEMALE HOUSING NO. : 7123-6043-30
- 3) APPLICABLE REAR HOLDER NO. : 7157-6241-40



ISSUE MARK

								CUSTOMER △				MATERIAL		TREAT.		
								CUSTOMER PART NO.				SPEC. NYLON 6 (BLACK)		& FIN.		
								OFFICE △				NAME △ M TYPE CONNECTOR HOUSING				
								VENDOR				STDLIB NO.				
								VENDOR NO.				PART NO. 7122-6043-30				
GENERAL TOLERANCE								DWG TYPE	DWG SOURCE	DWG DATE	UNIT	SCL	ANGLE	DWG NO. △7122-6043-30:R		TRIAL PART NO.
	10MAX	50MAX	100MAX	250MAX	250OVR	ANGLE	ECCENT	R	RENEW	83.05.17	mm	2/1	3			
A	±0.15	±0.2	±0.3	±0.5	±0.75	±30'	0.1	APPROVED	CHECKED	CHECKED	DESIGN	DRAWN				
B	±0.2	±0.3	±0.55	±0.95	±1.4	±30'	0.1			SAKAI		H. YABE				
◎	±0.3	±0.5	±0.8	±1.4	±2	±30'	0.15									
SPECIFIED							WEIGHT						YAZAKI CORPORATION			
							g		90.222		190.2.22		190.2.20		83.05.18 90.02.20	