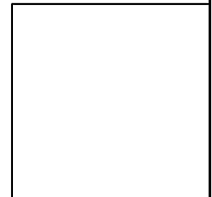
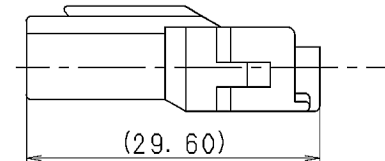
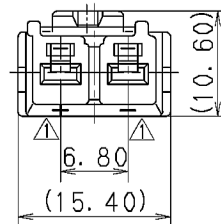
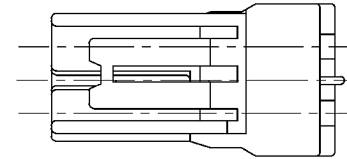


注記

- 1. 適用端子品番 : 7116-1240 ETC.
- △ 2. 適用リヤホルダ品番 : 7157-6822
- △ 3. かん合相手品番 : 7122-1923-30, 7122-1924-30

NOTES

- 1. APPLICABLE TERMINAL NO. : 7116-1240 ETC.
- △ 2. APPLICABLE REAR HOLDER NO. : 7157-6822
- △ 3. MATING PART NO. : 7122-1923-30, 7122-1924-30



△	10. 11. 26	CHANGED PART NAME	C10-ZB17	J. C							MATL. SPEC. PA66 (BLACK)		TREAT. & FIN.		
△	01. 06. 15	ELIMINATE REAR HOLDER COLOR NO.	C01-X575	H. Y	CUSTOMER				CUSTOMER PART NO.		CUSTOMER DWG NO.				
△	99. 06. 14	CHANGED NOTE	C99-L830	O. S							NAME △ T TYPE HOUSING 2P				
△	89. 11. 22	ADD. THE STAMP	C89-7550	M. K							TRIAL PART NO.				
	89. 07. 06	NEW	C89-L726	S. Y	OFFICE				VENDOR		FEMALE (B)				
LET	DATE	REVISION RECORD	NO.	CHKD	VENDOR NO.										
GENERAL TOLERANCE															
	10MAX	50MAX	100MAX	250MAX	2500VR	ANGLE	ECCENT	DWG TYPE	DWG SOURCE	DWG DATE	UNIT	SCL	ANGLE	PART NO.	7123-1923-30
A	±0.15	±0.2	±0.3	±0.5	±0.75	±30'	0.1	R	NEW	89.07.06	mm	2/1	3	CH. CODE	7123-1923-30
B	±0.2	±0.3	±0.55	±0.95	±1.4	±30'	0.1	APPROVED	CHECKED	CHECKED	DESIGN	DRAWN	DWG NO.	7123-1923-30:R	SET DWG NO.
◎	±0.3	±0.5	±0.8	±1.4	±2	±30'	0.15	S. MIZUSE		R. CABANGAL	K. SAKURAI	J. CANDO	YAZAKI CORPORATION		
SPECIFIED					MASS										
					10. 11. 26										

1

2

3

