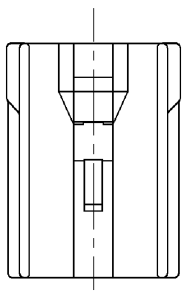
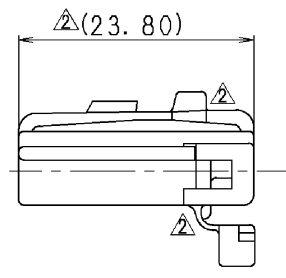
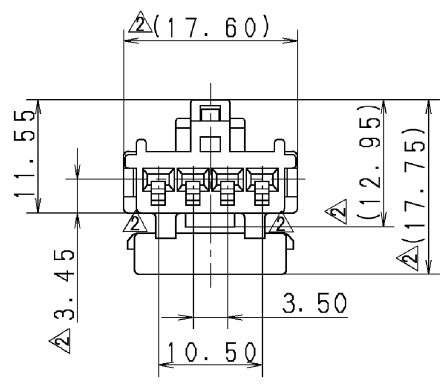


△	PART NO. AND CH. CODE	COLOR
	7123-8345	NATURAL
	7123-8345-30	BLACK
	7123-8345-60	GREEN



注記
 △ 1. かん合相手は、7122-8345 ETC.
 △ 2. 使用ターミナルは、7116-1473, 7116-1473-08
 7116-1474, 7116-1474-08

NOTES
 △ △ 1. MATING PART NO. :7122-8345 ETC.
 △ 2. APPLICABLE TERMINAL PART NO. :7116-1473, 7116-1473-08
 7116-1474, 7116-1474-08



△	10/11/15	CHANGED PART NAME	C10-ZA96	R. M						ISSUE MARK						
△	05/05/17	CHANGED FORM, ETC.	C05-Z801	S. T	CUSTOMER					MATL. SPEC.	PBT	TREAT. & FIN.				
△	88/04/30	CHANGED PART NO., CHANGED AND ADDED NOTES	8MC-0491	H. S	CUSTOMER PART NO.					CUSTOMER DWG NO.						
	87/10/02	NEW	7MC-0608	H. S	OFFICE					TRIAL PART NO.						
LET	DATE	REVISION RECORD	NO.	CHKD	VENDOR					NAME △SDL TYPE HOUSING						
△GENERAL TOLERANCE					VENDOR NO.					4P FEMALE						
	10MAX	50MAX	100MAX	250MAX	2500VR	ANGLE	ECCENT	DWG TYPE	DWG SOURCE	DWG DATE	UNIT	SCL	ANGLE	PART NO.	△7123-8345 ETC.	
A	±0.15	±0.2	±0.3	±0.5	±0.75	±30'	0.1	R	NEW	87/10/02	mm	2:1	3	CH. CODE	△7123-8345 ETC.	
B	±0.2	±0.3	±0.55	±0.95	±1.4	±30'	0.1	APPROVED	CHECKED	CHECKED	DESIGN	DRAWN	DWG NO.	7123-8345:R	SET DWG NO.	
©	±0.3	±0.5	±0.8	±1.4	±2	±30'	0.15	S. MIZUSE	——	R. CABANGAL	H. SAITOH	R. MAJERANO	YAZAKI CORPORATION			
SPECIFIED							MASS	10/11/15	——	10/11/15	87/10/02	10/11/15				

1 2 3