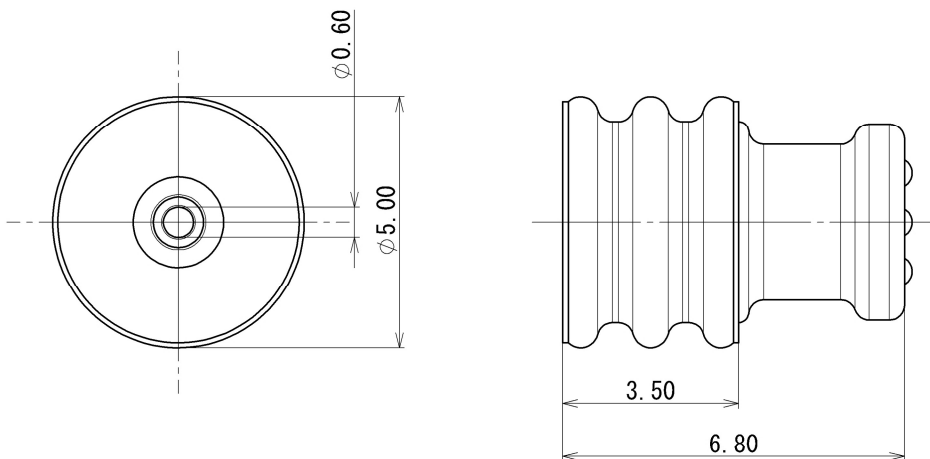


RUBBER PART GENERAL TOLERANCE					
PART DIM.		1	2	③	
0 TO 3		±0.2	±0.3	±0.4	
3 TO 6		±0.2	±0.4	±0.5	
6 TO 10		±0.3	±0.5	±0.6	
10 TO 18		±0.3	±0.6	±0.8	
18 TO 30		±0.4	±0.8	±1.0	
30 TO 50		±0.5	±1.0	±1.5	
50 TO 80		±0.6	±1.2	±2.0	
80 TO 120		±0.7	±1.4	±2.5	
120 TO 180		±0.8	±1.6	±3.0	
180 TO 250		±1.0	±2.0	±4.0	
250 TO 315		±1.2	±2.5	±5.0	
315 TO 400		±1.5	±3.0	±6.0	
400 TO 500		±1.8	±3.5	±7.0	
500 OVER		±0.4 %	±0.8 %	±1.5 %	



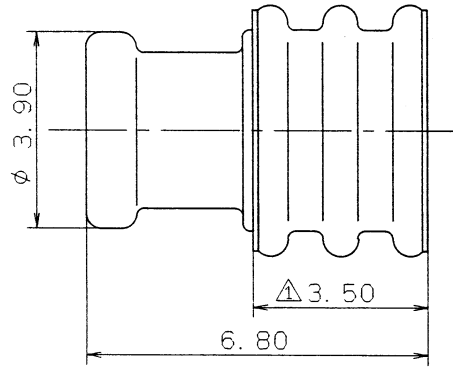
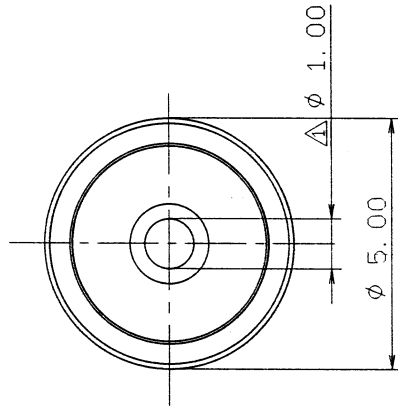
注記

- ① 適用電線サイズ : CAVUS 0.3~0.5 sq  
CIVUS 0.35~0.5 sq  
IVSSH 0.35f~0.5f sq
- ② 適用端子品番 : 7114-1304、7116-1304 ETC.
- ③ 適用ハウジング品番 : 7222-7780-40、  
7123-7780-40 ETC.
- ④ 含油シリコンゴム (肌色)

NOTES

- ① APPLICABLE WIRE SIZE : CAVUS 0.3~0.5 sq  
CIVUS 0.35~0.5 sq  
IVSSH 0.35f~0.5f sq
- ② APPLICABLE TERMINAL NO. : 7114-1304, 7116-1304 ETC.
- ③ APPLICABLE HOUSING NO. : 7222-7780-40, 7123-7780-40 ETC.
- ④ MATERIAL : SELF-LUBRICATION SILICONE RUBBER (SKIN COLOR)

①	2018/08/10	ADDED APPLICABLE WIRE SIZE, ETC.	C18-P256	Y. M	CUSTOMER					MATL. SPEC.	NOTE 4	TREAT. & FIN.			
①	1994/09/22	CHANGED GRADE OF MATERIAL, [A]	C94-L630	S. K	CUSTOMER PART NO.										
	1990/09/06	NEW	C90-L962	M. K	CUSTOMER DWG NO.					NAME WIRE SEAL FOR Z-TYPE					
LET	DATE	REVISION RECORD	NO.	CHKD	OFFICE					TRIAL PART NO. or PRODUCT NO.					
					VENDOR										
					VENDOR NO.										
GENERAL TOLERANCE					DWG TYPE	DWG SOURCE	DWG DATE	UNIT	SCL	ANGLE	PART NO. ① 7157-3789-50, [A]				
A	±0.15	±0.2	±0.3	±0.5	±0.75	±0.5°	0.1	R	NEW	1990/09/06	mm	10:1	3	DWG NO. 7157-3789-50:R	
B	±0.2	±0.3	±0.55	±0.95	±1.4	±1.0°	0.1	APPROVED	CHECKED	CHECKED	DESIGN	DRAWN	SET DWG NO.		
C	±0.3	±0.5	±0.8	±1.4	±2	±1.5°	0-15	N. TAGUCHI	K. FUKUDA	—	K. ABE	Y. MAEDA	YAZAKI Corporation		
SPECIFIED GENERAL TOLERANCE 3					MASS	② (0.1) g							2018/08/10		2018/08/10

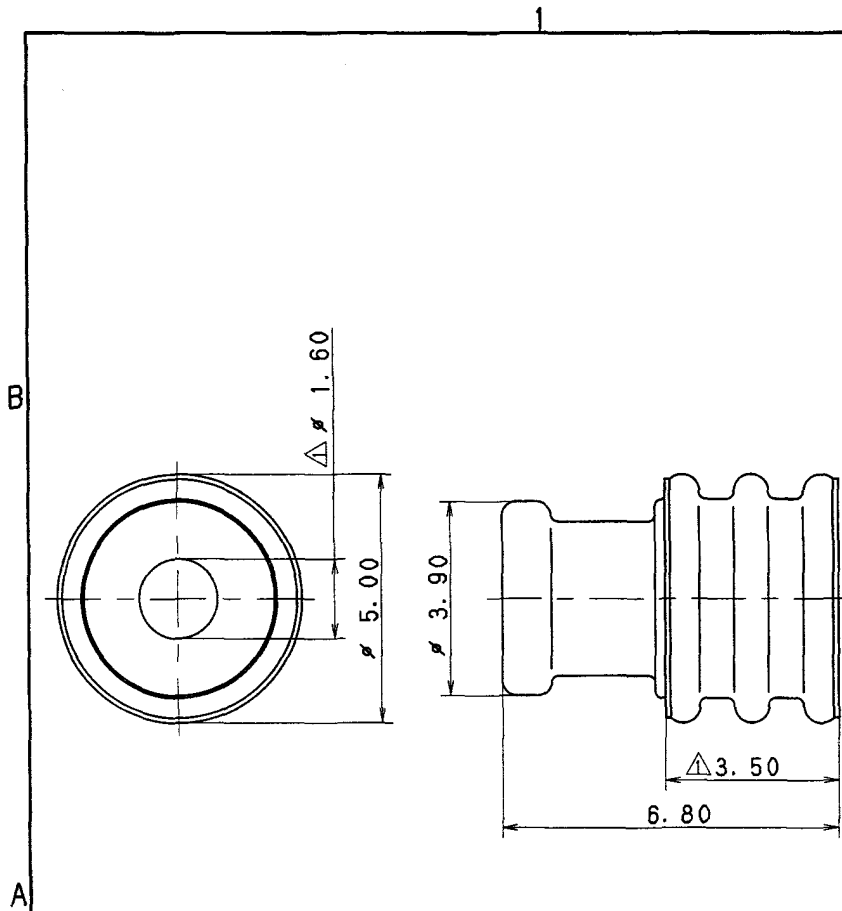


RUBBER PART GENERAL TOLERANCE			
PART DIM.	1	2	③
0 TO 3	± 0.2	± 0.3	± 0.4
3 TO 6	± 0.2	± 0.4	± 0.5
6 TO 10	± 0.3	± 0.5	± 0.6
10 TO 18	± 0.3	± 0.6	± 0.8
18 TO 30	± 0.4	± 0.8	± 1.0
30 TO 50	± 0.5	± 1.0	± 1.5
50 TO 80	± 0.6	± 1.2	± 2.0
80 TO 120	± 0.7	± 1.4	± 2.5
120 TO 180	± 0.8	± 1.6	± 3.0
180 TO 250	± 1.0	± 2.0	± 4.0
250 TO 315	± 1.2	± 2.5	± 5.0
315 TO 400	± 1.5	± 3.0	± 6.0
400 TO 500	± 1.8	± 3.5	± 7.0
500 OVER	± 0.4 %	± 0.8 %	± 1.5 %

- △ NOTES
- APPLICABLE WIRE SIZE  
:AVS 0.2H~0.3sq  
:CAVS 0.3~0.5sq  
:CAVUS 0.85sq (EQUIVALENT)
  - APPLICABLE TERMINAL NO.  
:7114-1304, 7116-1304 ETC.
  - APPLICABLE HOUSING NO.  
:7222-7780-40, 7123-7780-40 ETC.
  - MATERIAL: SELF-LUBRICATION SILICONE RUBBER(LIGHT BLUE)
  - ( ) PART NO. TO BE USED AIR-BAG SYSTEM AND ADMINISTRATION SYSTEM.

- △ 注記
- 適用電線サイズ: AVS 0.2H~0.3sq  
:CAVS 0.3~0.5sq  
:CAVUS 0.85sq 相当
  - 適用端子品番: 7114-1304, 7116-1304 他
  - 適用ハウジング品番: 7222-7780-40,  
7123-7780-40 他
  - 材料: 含油シリコンゴム (薄青)
  - エアバック回路及び特別管理回路で使用する場合は、( )内品番を適用する事。

△	97.03.25	ADDED A/B PART NO.	C97-L559	M. T	CUSTOMER		MATL. SPEC.	SEE NOTES	TREAT. & FIN.					
△	94.09.20	CHANGED GRADE OF MATERIAL. △	C94-L630	S. K	CUSTOMER PART NO.									
△	93.12.20	RENEW	C93-7169	H. K	CUSTOMER DWG NO.		NAME WIRE SEAL FOR Z-TYPE							
	87.10.29	NEW	7MC-0697	I. O	TRIAL PART NO.									
LET	DATE	REVISION RECORD	NO.	CHKD	VENDOR									
GENERAL TOLERANCE					VENDOR NO.									
	10MAX	50MAX	100MAX	250MAX	250OVR	ANGLE	ECCENT	DWG TYPE	DWG SOURCE	DWG DATE	UNIT	SCL	ANGLE	PART NO.
A	±0.15	±0.2	±0.3	±0.5	±0.75	±30°	0.1	R	RENEW	87.10.29	mm	10/1	3	△7157-3790-90, △(7B57-3790-90)
B	±0.2	±0.3	±0.55	±0.95	±1.4	±30°	0.1	APPROVED	CHECKED	CHECKED	DESIGN	DRAWN	DWG NO.	7157-3790-90:R
C	±0.3	±0.5	±0.8	±1.4	±2	±30°	0.15				K. ABE	KUROSAWA	SET DWG NO.	
SPECIFIED GENERAL TOLERANCE 3					MASS	g		97.04.01		97.3.31	93.12.20	97.03.25	YAZAKI CORPORATION	



RUBBER PART GENERAL TOLERANCE			
PART DIM.	1	2	③
0 TO 3	± 0.2	± 0.3	± 0.4
3 TO 6	± 0.2	± 0.4	± 0.5
6 TO 10	± 0.3	± 0.5	± 0.6
10 TO 18	± 0.3	± 0.6	± 0.8
18 TO 30	± 0.4	± 0.8	± 1.0
30 TO 50	± 0.5	± 1.0	± 1.5
50 TO 80	± 0.6	± 1.2	± 2.0
80 TO 120	± 0.7	± 1.4	± 2.5
120 TO 180	± 0.8	± 1.6	± 3.0
180 TO 250	± 1.0	± 2.0	± 4.0
250 TO 315	± 1.2	± 2.5	± 5.0
315 TO 400	± 1.5	± 3.0	± 6.0
400 TO 500	± 1.8	± 3.5	± 7.0
500 OVER	± 0.4 %	± 0.8 %	± 1.5 %

- △ 注記
1. 適用電線サイズ: AVS 0.5 ~ 0.85sq  
: AVX 0.85sq  
: CAVS 0.85sq 相当
  2. 適用端子番号: 7114-1305, 7116-1305 ETC.
  3. 適用ハウジング番号: 7222-7780-40,  
7123-7780-40 ETC.
  4. ( ) 内品番は、エアバッグ回路及び、  
特別管理回路に使用する時に、適用すること。

- △ NOTES
1. APPLICABLE WIRE SIZE  
: AVS 0.5 ~ 0.85sq  
: AVX 0.85sq  
: CAVS 0.85sq (EQUIVALENT)
  2. APPLICABLE TERMINAL NO.  
: 7114-1305, 7116-1305 ETC.
  3. APPLICABLE HOUSING NO.  
: 7222-7780-40, 7123-7780-40 ETC.
  4. ( ) PART NO. IS USED FOR PARTS ASSOCIATED  
WITH A/B CIRCUITS OR OTHER SPECIFIED CIRCUIT.

△	DATE	REVISION RECORD	NO.	CHKD
△	97.07.11	ADDED NOTE	C97-M447	H. K.
△	94.09.20	CHANGED GRADE OF MATERIAL, [A]	C94-L630	S. K.
△	93.12.20	RENEW	C93-7170	H. K.
△	88.08.26	NEW	8MC-1068	. S

CUSTOMER	CUSTOMER PART NO.	CUSTOMER DWG NO.
OFFICE	TRIAL PART NO.	
VENDOR		
VENDOR NO.		

MATL. SILICONE RUBBER	TREAT. & FIN.
SPEC. (LIGHT GREEN)	
NAME WIRE SEAL FOR Z-TYPE	ISSUE MARK

GENERAL TOLERANCE	DWG TYPE	DWG SOURCE	DWG DATE	UNIT	SCL	ANGLE	PART NO.
A ±0.15 ±0.2 ±0.3 ±0.5 ±0.75 ±30' 0.1	R	RENEW	87.10.29	mm	10/1	3	△ 7157-3791-60 (7B57-3791-60), [A]
B ±0.2 ±0.3 ±0.55 ±0.95 ±1.4 ±30' 0.1	APPROVED	CHECKED	CHECKED	DESIGN	DRAWN		DWG NO. 7157-3791-60:R SET DWG NO.
C ±0.3 ±0.5 ±0.8 ±1.4 ±2 ±30' 0.15	神田	渡辺	K. ABE	SERISAWA			YAZAKI CORPORATION
SPECIFIED MASS	97.07.24	97.7.15	93.12.20	97.07.11			