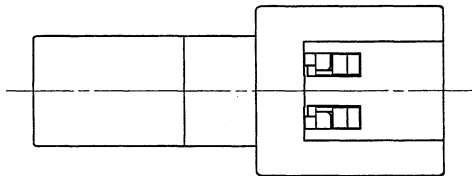


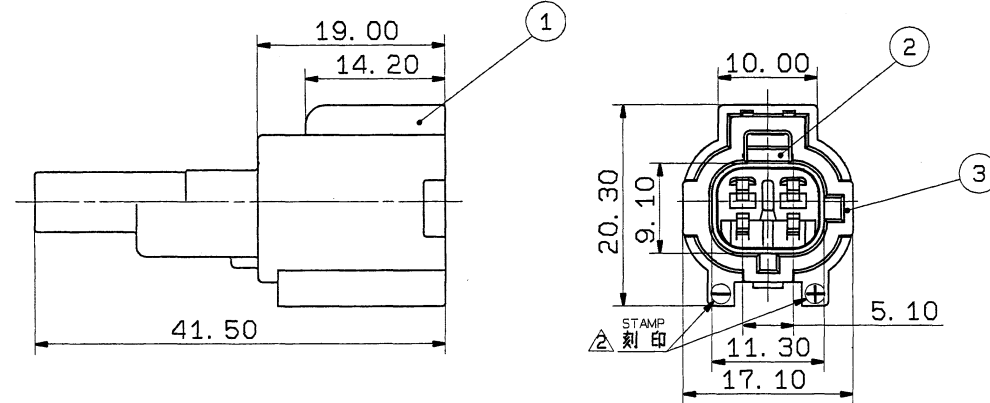
1

2

3



SUB ASS'Y PART NO.	NO.	NAME	PART NO.	MATERIAL
△7222-8521-80, ▢	①	HOUSING 2PM(BR)	7122-8520-80	PBT (BROWN)
	②	LIP PAKIN' 2PM	△7137-2520-60, ▢	SELF-LUBRICATION SILICONE RUBBER(LIGHT GREEN)
	③	PACKIN'HOLDER 2PM(BR)	7157-7432-80	PBT (BROWN)
△7222-8521-50, ▢	①	HOUSING 2PM(OR)	7122-8520-50	PBT (ORANGE)
	②	LIP PAKIN' 2PM	△7137-2520-60, ▢	SELF-LUBRICATION SILICONE RUBBER(LIGHT GREEN)
	③	PACKIN'HOLDER 2PM(BR)	7157-7432-80	PBT (BROWN)



注記

1. 嵌合メスハウジング品番 : 7123-8521-80
: 7123-8521-50 △
2. 使用フロントホルダ品番 : 7157-7728
3. 使用オスターミナル品番 : 7114-1304 ETC.

NOTES

1. MATING FEMALE HOUSING NO. : 7123-8521-80
: 7123-8521-50 △
2. APPLICABLE FRONT HOLDER NO. : 7157-7728
3. APPLICABLE MALE TERMINAL NO. : 7114-1304 ETC.

ISSUE MARK

LET	DATE	REVISION RECORD	NO.	CHKD	CUSTOMER	CUSTOMER PART NO.	CUSTOMER DWG NO.	MATL. SPEC.	TREAT. & FIN.
△	94.09.20	CHANGED GRADE OF MATERIAL, ▢	C94-L631	S. K				SEE TABLE	
△	91.01.29	ADD. PART NO.	C91-6167	M. K					
△	89.09.08	ADDED STAMP	C89-7346	M. K					
△	89.07.05	RENEW	C89-6646	H. I					
GENERAL TOLERANCE					VENDOR NO.				
A	±0.15	±0.2	±0.3	±0.5	±0.75	±30'	0.1	DWG TYPE	DWG SOURCE
B	±0.2	±0.3	±0.55	±0.95	±1.4	±30'	0.1	R	RENEW
◎	±0.3	±0.5	±0.8	±1.4	±2	±30'	0.15	APPROVED	CHECKED
SPECIFIED					DESIGN				
MASS					DRAWN				
g					YASHIMA				
94.9.26					T. HIRATA				
94.09.22					9/20				
87.02.04					94.09.20				
PART NO.					Z-TYPE CONNECTOR HOUSING				
CH. CODE.					2PM SUB ASS'Y				
DWG NO.					7222-8521-80 ETC.				
DWG NO.					△ 7222-8521-50:R				
YAZAKI CORPORATION									

1

2

3