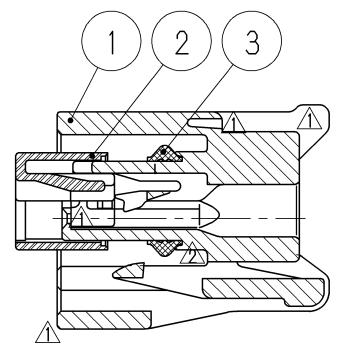
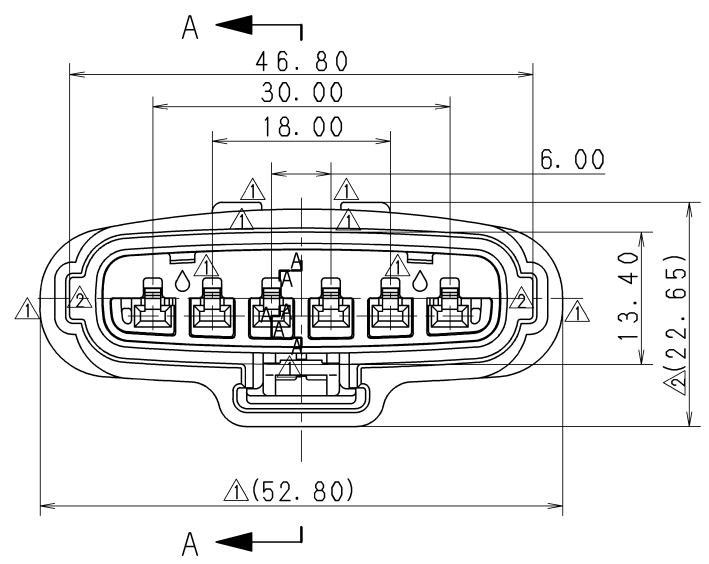


1

2

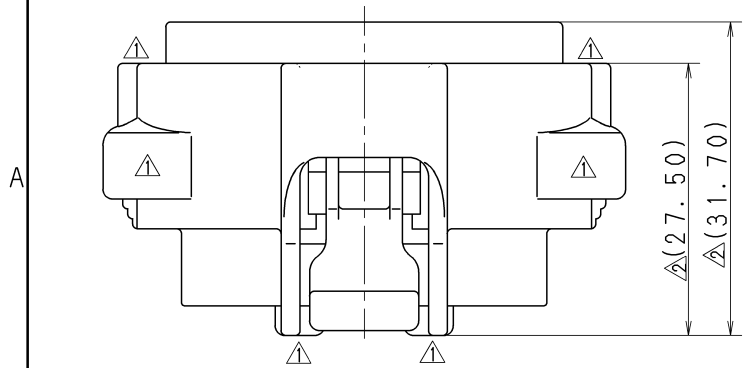
3

△ SUB ASSEMBLY PART NO. AND CH. CODE	NO.	PART NO. AND CH. CODE	△ PART NAME	MATERIAL	COLOR	QTY.
7283-1968-30□	①	7183-1968-30	2. 3Ⅱ 6P SEALED HOUSING FEMALE	PBT	BLACK	1
	②	7158-4364	2. 3Ⅱ 6P SEALED SPACER FEMALE	PBT	NATURAL	1
	③	7137-2665-80	2. 3Ⅱ 6P SEALED PACKING	SILICONE RUBBER	BROWN	1



注記  
 △ 1. 取扱説明書No. YPES-15-222, YPES-15-119

NOTE  
 △ 1. HANDLING MANUAL NO. YPES-15-222, YPES-15-119



ISSUE MARK

△ 11.03.24	ADDED NOTES ETC., □	C11-Z220	T. H	CUSTOMER				MATL. SPEC. SEE TABLE				TREAT. & FIN.			
△ 97.05.27	CHANGED FORM, □	C97-L888	H. K	CUSTOMER PART NO.				CUSTOMER DWG NO.				NAME △ 2. 3Ⅱ 6P SEALED HOUSING			
97.03.03	NEW	C97-L432	M. T	OFFICE				TRIAL PART NO.				SUB ASSEMBLY FEMALE			
LET	DATE	REVISION RECORD	NO.	CHKD	VENDOR				VENDOR NO.				PART NO. 7283-1968-30, □		
GENERAL TOLERANCE				VENDOR NO.				DWG TYPE				PART NO. CH. CODE			
	10MAX	50MAX	100MAX	250MAX	2500VR	ANGLE	ECCENT	DWG TYPE	DWG SOURCE	DWG DATE	UNIT	SCL	ANGLE	7283-1968-30, □	
A	±0.15	±0.2	±0.3	±0.5	±0.75	±30'	0.1	R	NEW	97.03.03	mm	2/1	3	DWG NO. 7283-1968-30:R	
B	±0.2	±0.3	±0.55	±0.95	±1.4	±30'	0.1	APPROVED	CHECKED	CHECKED	DESIGN	DRAWN	SET DWG NO.		
©	±0.3	±0.5	±0.8	±1.4	±2	±30'	0.15	M. FUKUDA	_____	T. HAMAI	H. TAKAHASHI	J. CANDO	YAZAKI CORPORATION		
SPECIFIED				MASS				11.03.24				11.03.24			

1

2

3

