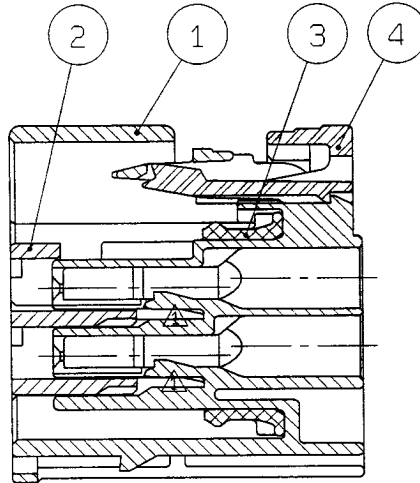
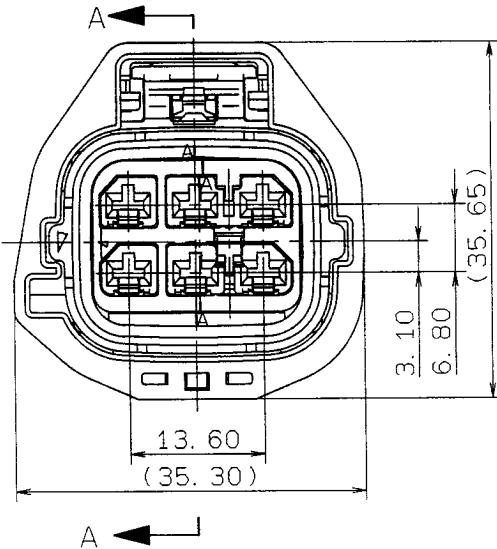
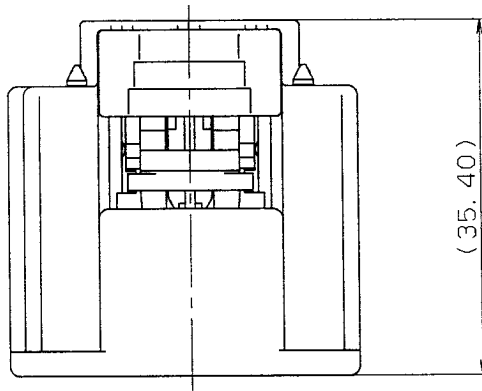


1

2

3



SEC. A-A

QTY.	NO.	PART NO. AND CH. CODE	MATERIAL	COLOR
1	1	① 7183-5577-10	HPA	DARK GRAY
1	1	② 7158-4203	HPA	NATURAL
1	1	③ 7137-2753-90	SILICONE RUBBER	BLUE
1		④ 7158-7080-50	HPA	RED

7283-5926-10
7283-5577-10
SUB ASSEMBLY
PART NO. & CH. CODE

NOTES

1. APPLICABLE TERMINAL PART NO. : 7116-4150-02 ETC.
2. MATING PART NO. : 7282-5577-10
- △ 3. APPLICABLE WIRE SEAL NO. : 7158-3111-60 ETC.
- △ 4. APPLICABLE DUMMY PLUG NO. : 7158-3114-90

注記

1. 適用端子品番 : 7116-4150-02 ETC.
2. 嵌合相手品番 : 7282-5577-10
- △ 3. 適用ワタ品番 : 7158-3111-60 ETC.
- △ 4. 適用防水栓品番 : 7158-3114-90

ISSUE MARK

LET	DATE	REVISION RECORD	NO.	CHKD	CUSTOMER	MATL. SPEC.	TREAT. & FIN.
△	99.11.15	ADDED PART NO. ETC.	C99-M695	M. K	CUSTOMER PART NO.	SEE TABLE	
△	98.06.04	CHANGED FORM	C98-L926	Y. I	CUSTOMER DWG NO.		
—	97.03.31	NEW	C97-L555	H. K	TRIAL PART NO.	NAME	2.8 SYSTEM SEALED CONNECTOR
GENERAL TOLERANCE					VENDOR	6P(F) SUB ASSEMBLY	
	10MAX	50MAX	100MAX	250MAX	2500V/R	DWG TYPE	DWG SOURCE
A	±0.15	±0.2	±0.3	±0.5	±0.75	R	NEW
B	±0.2	±0.3	±0.55	±0.95	±1.4	APPROVED	CHECKED
③	±0.3	±0.5	±0.8	±1.4	±2	酒井 甲田 永野 栄	DESIGN
SPECIFIED					MASS	Y. UCHIDA	DRAWN
					g	199.11.23	KJKUCHI
						99.11.23	櫻山?
						99.11.19	
						97.02.28	
						99.11.15	
PART NO. CH. CODE						△7283-5577-10 ETC.	
DWG NO.						7283-5577-10:R	
SET DWG NO.							
YAZAKI CORPORATION							

1

2

3