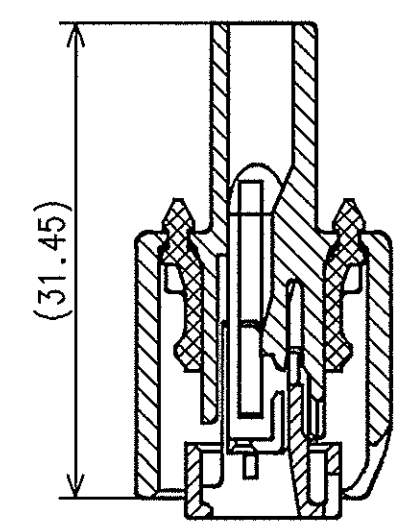
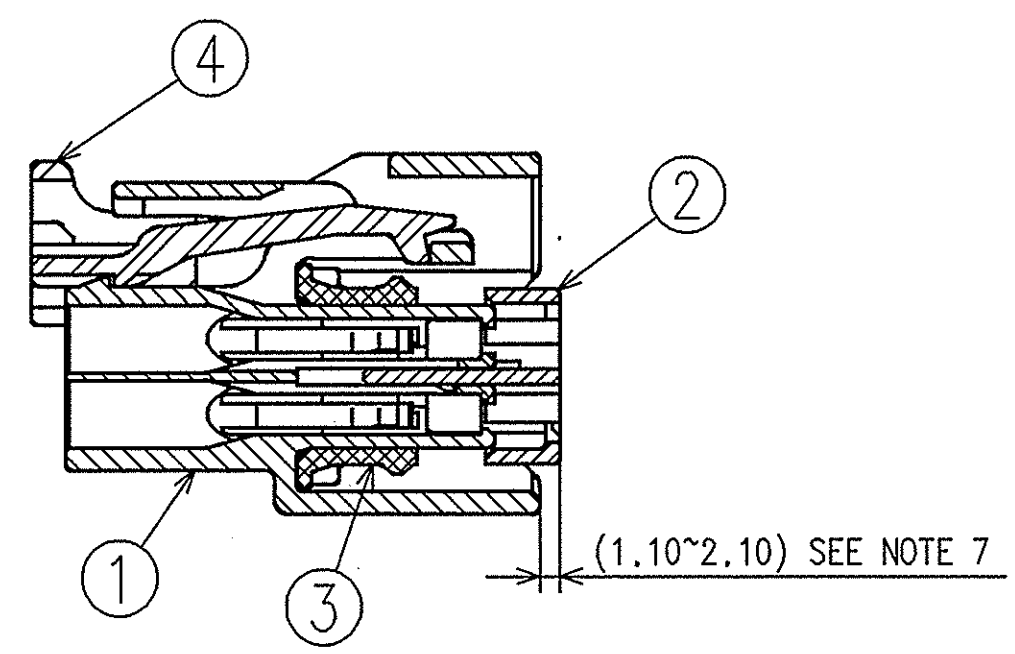


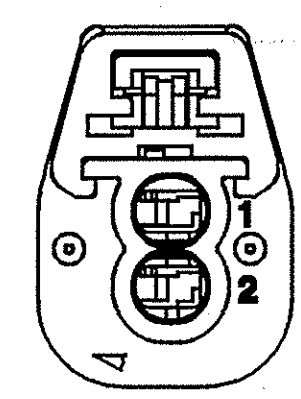
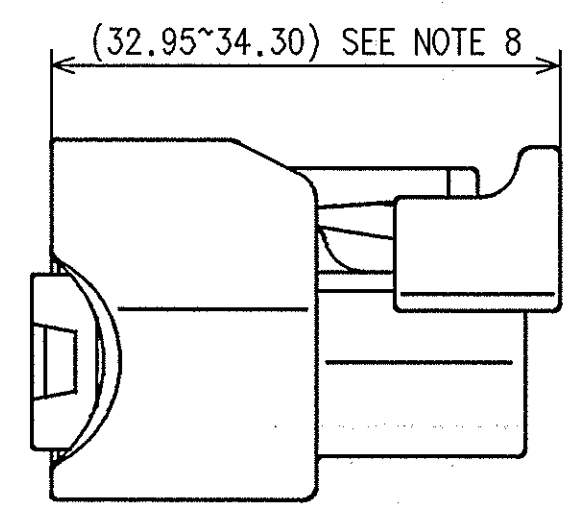
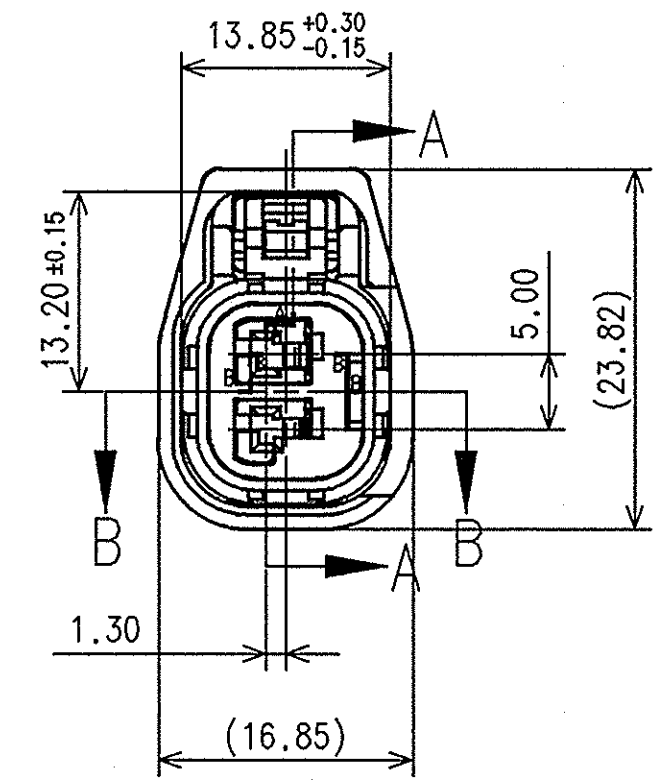
7283-6647-30 (ALTERNATE A KEYWAY)



SECTION B-B



SECTION A-A



SUB ASSEMBLY PART NUMBER	NO.	PART NUMBER	PART NAME	MATERIAL	COLOR	QUANTITY
7283-6430-30	①	7183-6430-30	2P 1.5MM YESC SEALED FEMALE HOUSING	HPA	BLACK	1
	②	7158-4269	2P 1.5MM YESC SEALED FEMALE TPA	HPA	NATURAL	1
	③	7137-2795-50	2P 1.5MM YESC INTERFASE SEAL	SILICONE	RED	1
	④	7158-8090-50	1.5MM YESC SEALED CPA	HPA	RED	1
7283-6647-30	①	7183-6647-30	2P 1.5MM YESC SEALED FEMALE HOUSING	HPA	BLACK	1
	②	7158-4269	2P 1.5MM YESC SEALED FEMALE TPA	HPA	NATURAL	1
	③	7137-2795-50	2P 1.5MM YESC INTERFASE SEAL	SILICONE	RED	1
	④	7158-8090-50	1.5MM YESC SEALED CPA	HPA	RED	1

NOTES:

- PARTS MUST BE PURCHASED FROM YAZAKI.
- PARTS MUST BE FREE OF FLASH AND IMPERFECTIONS THAT AFFECT FUNCTION.
- APPLICABLE TERMINAL: SEE 7116-4102-02:R DRAWING (1.5 YESC)
- MATING PART NUMBER: DEVICE
- PART DESIGNED TO SATISFY USCAR, REVISION A, AUGUST 1995, CLASS 3.
- PART TO COMPLY WITH YPES-31-038 REQUIREMENTS.
- THIS DIMENSION SHOWS THE PRE-SET POSITION OF THE TPA.
- THIS DIMENSION SHOWS THE PRE-SET POSITION OF THE CPA.
- THIS DRAWING IS TO BE USED FOR INTERNAL YAZAKI PSW SUBMISSION.

ISSUE MARK

LET	DATE	REVISION RECORD	NO.	CHKD
-	06.11.10	NEW	C10-A390	M. R.

GENERAL TOLERANCE								
	10 MAX	50 MAX	100 MAX	250 MAX	250 OVR	ANGLE	ECCENT	
A	± 0.15	± 0.2	± 0.3	± 0.5	± 0.75	± 30'	0.1	
B	± 0.2	± 0.3	± 0.55	± 0.95	± 1.4	± 30'	0.1	
Ⓞ	± 0.3	± 0.5	± 0.8	± 1.4	± 2	± 30'	0.15	
	SPECIFIED						MASS	

CUSTOMER		MATERIAL SPEC. SEE TABLE		TREAT & FIN.	
CUSTOMER PART NO.		CUSTOMER DWG NO.		NAME	
OFFICE YNA		TRIAL PART NO.		2P 1.5MM YESC SEALED	
VENDOR		VENDOR NO.		FEMALE SUB-ASSEMBLY	
DWG TYPE	DWG SOURCE	DWG DATE	UNIT	SCL	ANGLE
R	7283-6430-30:R	06.11.10	mm	2/1	3
APPROVED	CHECKED	CHECKED	DESIGN	DRAWN	
<i>[Signature]</i>	<i>[Signature]</i>	<i>[Signature]</i>	MIKE MEARING	RAMON CHAVEZ	
06.14.10	06.23.10	06.21.10	06.13.00	06.18.10	
PART NO.		CH. CODE		DWG NO.	
7283-6430-30 ETC.		7283-6430-30:R		YAZAKI CORPORATION	