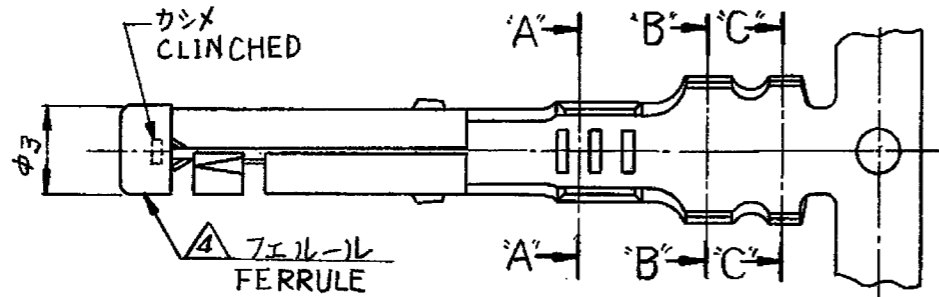


© COPYRIGHT 2010 BY TYCO ELECTRONICS CORPORATION. ALL INTERNATIONAL RIGHTS RESERVED.

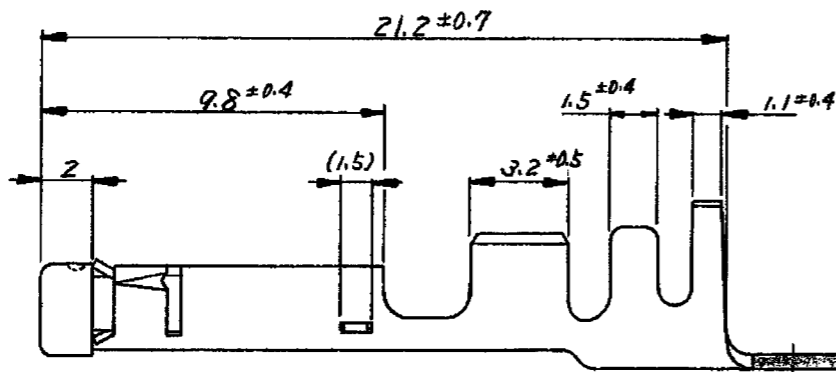
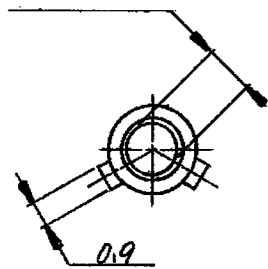
一般公差 GENERAL TOLERANCE	
30以下 100以下 OVER 30 NOT REACHING 100	±0.3
10以下 30以下 OVER 10 NOT REACHING 30	±0.25
NOT REACHING 10 角 ANGLE	±0.2 ±0°



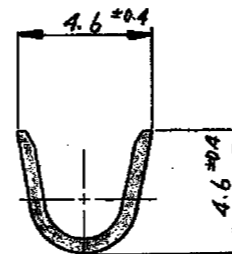
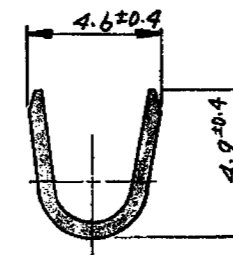
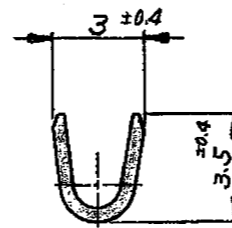
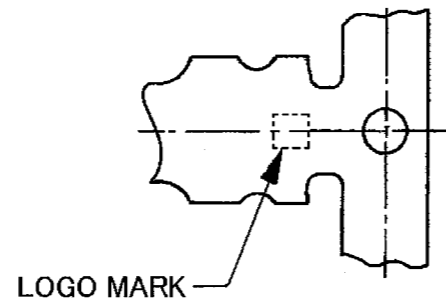
断面 'A-A'  
(SECTION "A"- "A")

断面 'C-C'  
(SECTION "C"- "C")

2ピンと嵌合  
TO MATE WITH  
2.0MM DIA. PIN



断面 'B-B'  
(SECTION "B"- "B")



注:

- 嵌合相手型番 170279
  - 適用製品規格番号 108-5121
  - 適用端子圧着仕様書番号 114-5039
- △ フェルル材料: 黄銅

NOTES

- MATING COUNTERPART PART NUMBER 170279
  - APPLICABLE PRODUCT SPECIFICATION NUMBER 108-5121
  - APPLICABLE APPLICATION SPECIFICATION NUMBER 114-5039
- △ FERRULE MATERIAL: BRASS

単位: 概 寸法 (DIMENSIONS IN MM. DO NOT SCALE PRINT)

LTR.	変更 (REVISION RECORD)	DR.	CHK.	DATE
C	EGR-10-018948	TS	MP	12/27/2010
B <sub>1</sub>	ECN J-12303	DMK	Y	3/19/08
B	ECN J80-5657	KA	JK	7/1/00
A <sub>1</sub>	ECN JB-5003	S.O	HN	1/30/00
A	変更	M.N	YS	9/8/00
0	作成	X.Y	JK	5/26/98

170293-1	逆巻リール (REVERSED REEL)	0.32	錫めき付黄銅 (PRETIN BRASS)	1-170280-1
パラ 端子型番 (LP PART No)	備考 (REMARKS)	板厚 (STOCK THICKNESS)	材料 (MATERIAL)	番号 (NUMBER)
	材料 (MATERIAL)	一般公差 (TOLERANCE)	Tyco Electronics Tyco Electronics Corporation Kawasaki, Japan	
	表参照 (SEE TABLE)	(EXCEPT 4) ± (AS NOTED) ±	名称 (NAME) 2ピンリセプタクルランスレス	
	適用電線範囲 (APPLICABLE WIRE RANGE) 0.5~2mm	DR. X. ymas 5/19/08	2MM DIA PIN RECEPTACLE LANCELESS	
	被覆外径 (INSULATION DIAMETER) 2.2~3.4mm	CHK. M. J. kawachi 5-21-78	SIZE B LOC J	番号 (NO.) C-170280
		DE. M. J. kawachi 5-21-78	尺度 (SCALE) 4:1	REV. C SHEET #
		APP. X. ymas 5/17/98		