

REVISIONS				
P	CTH	DESCRIPTION	DATE	OWN APVD
A4		REVISED PER PCN-22-154549	04OCT2022	AM IG
A5		REVISED PER PCN-23-190838	26OCT2023	AJ CB
B		REVISED PER PCN-23-192205	06FEB2024	RK CB
B1		REVISED PER PCN-25-254987	08SEP2025	AP AJ

FIGURE 1

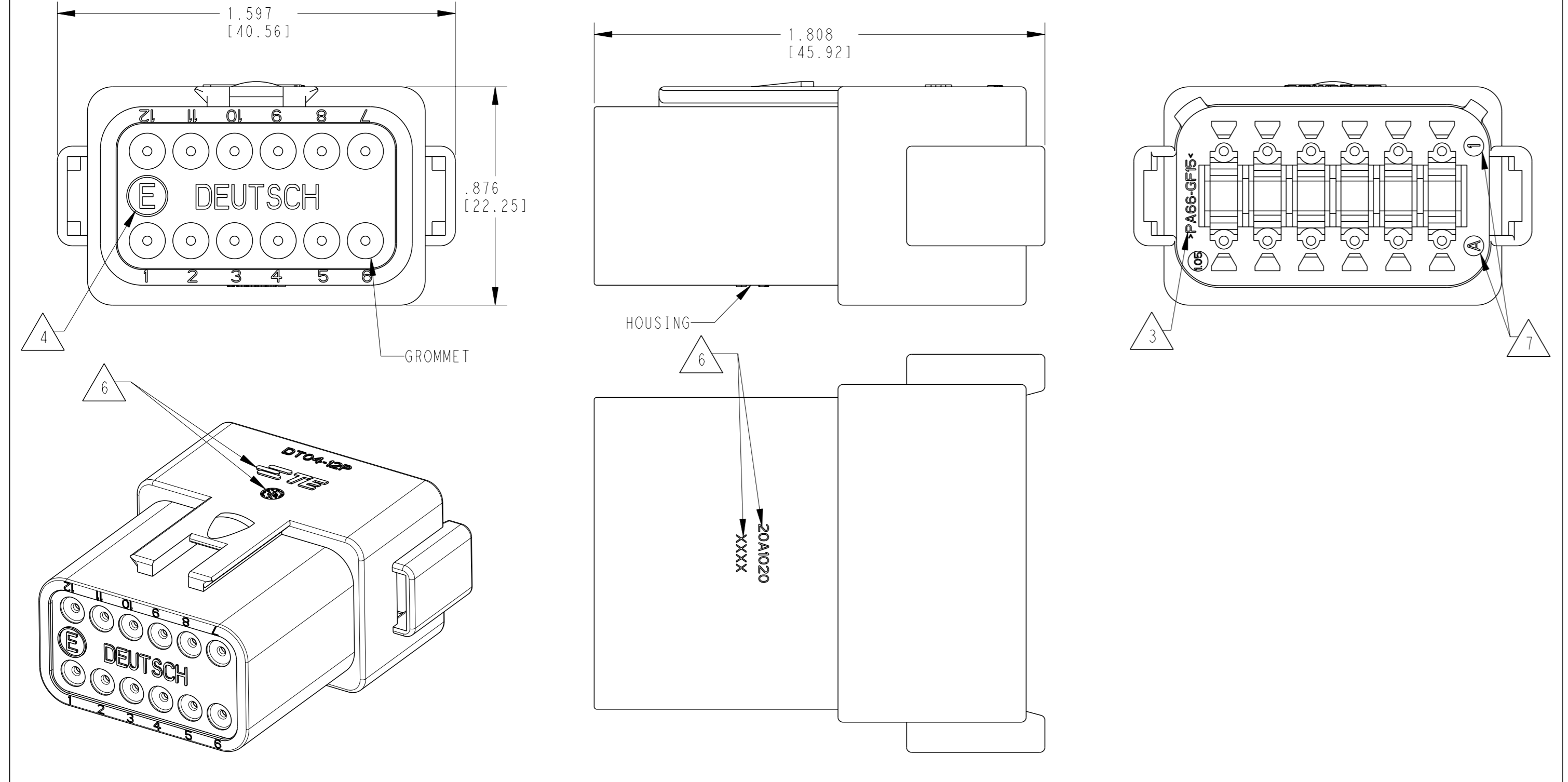


FIGURE 2 SHORT CAP

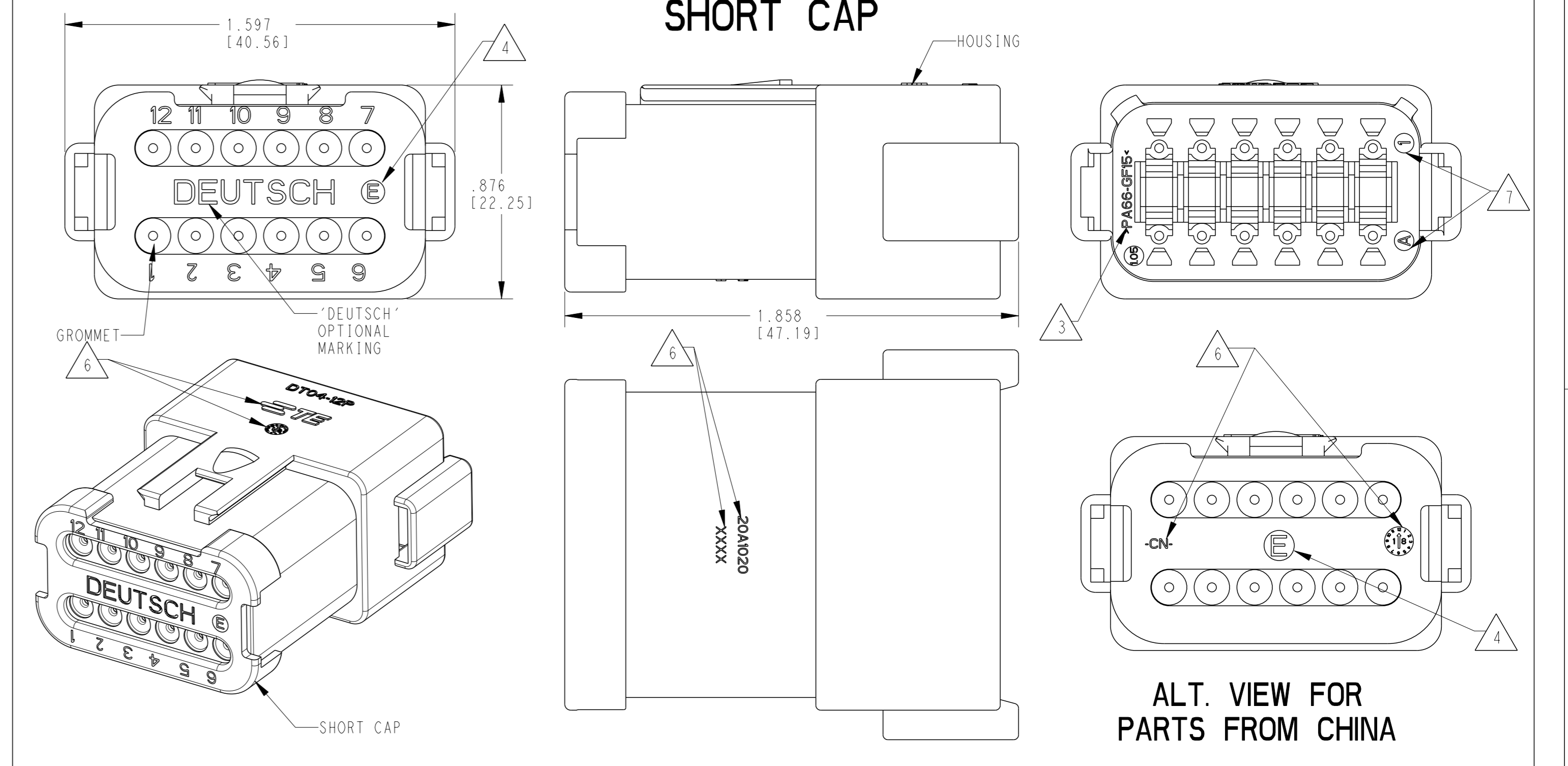
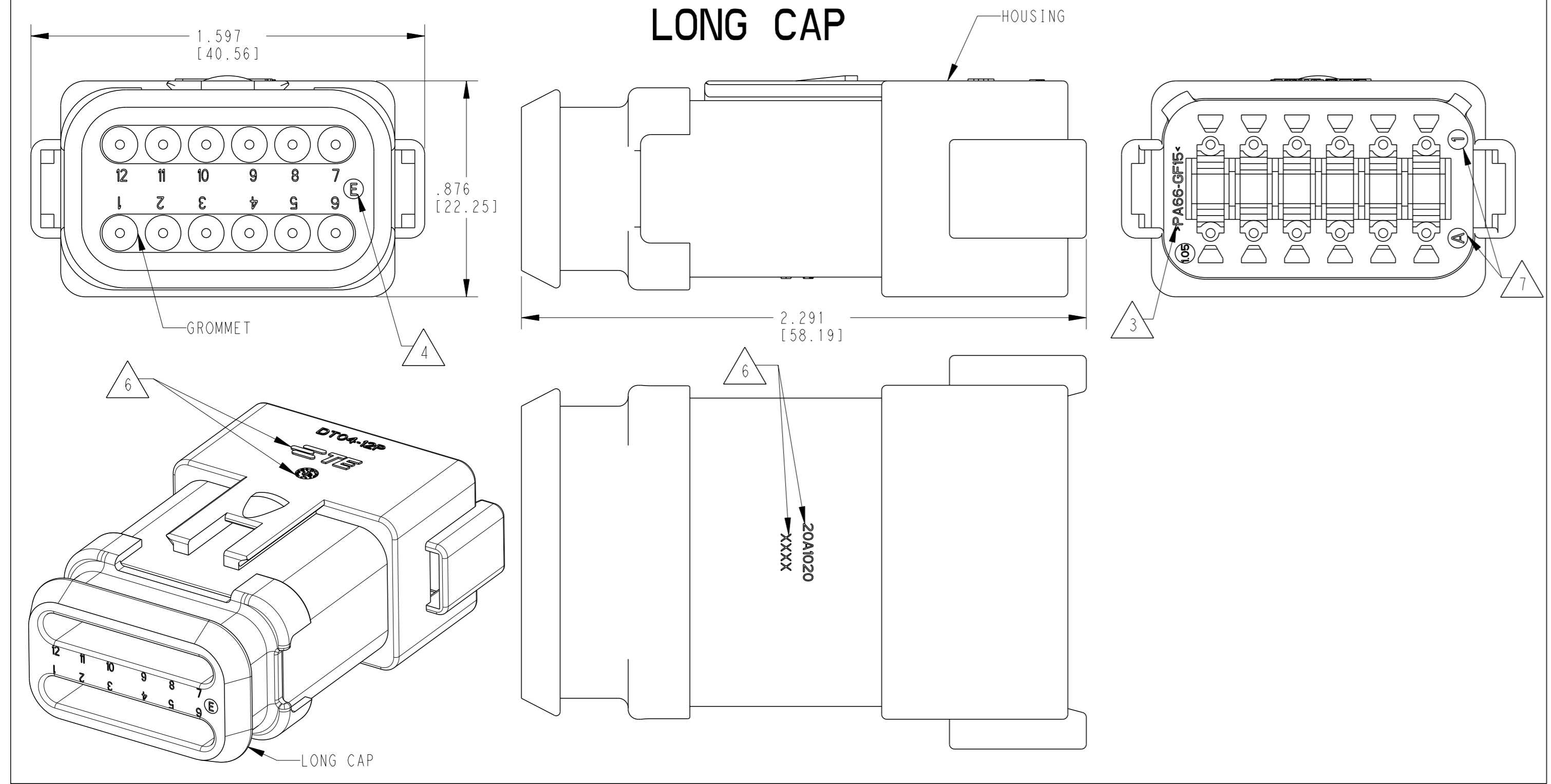
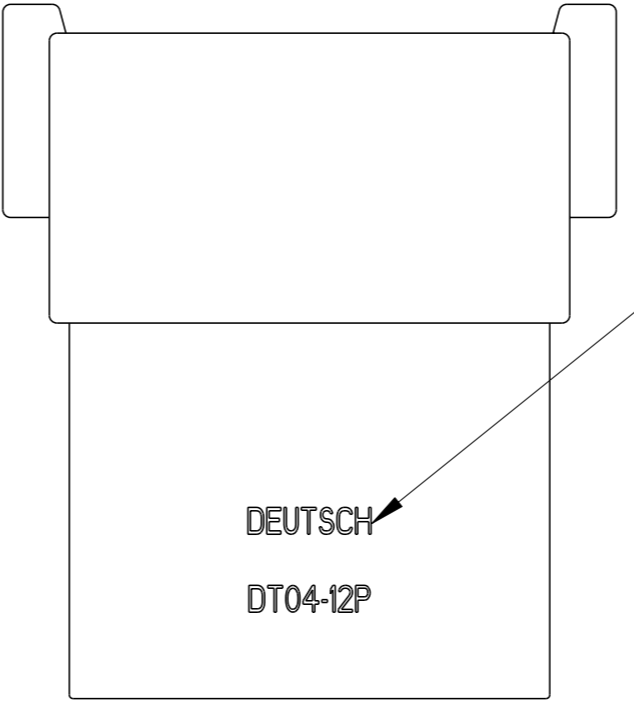


FIGURE 3 LONG CAP



CONTACT SIZE	WIRE RANGE	INSULATION OD SEALING RANGE	SEAL IDENTIFICATION
16	14-20 AWG [2.5-0.5mm ²]	.088-.145 [2.23-3.68] .053-.120 [1.35-3.05]	STANDARD SEAL EXTRA THIN SEAL E-SEAL

TE INTERNAL PART NUMBER	DEUTSCH PART NUMBER	PN REV	HOUSING COLOR	STANDARD SEAL	EXTRA THIN SEAL E-SEAL	BLOCKED SEAL	ENHANCED SEAL	SHORT CAP	LONG CAP	FIGURE
DT04-12PX	DT04-12PX	A	ALL	X						1
DT04-12PX-B016	DT04-12PX-B016	A	ALL	X			X			1
DT04-12PX-BE01	DT04-12PX-BE01	B	ALL	X			X	X		2
DT04-12PX-BE02	DT04-12PX-BE02	B	ALL	X			X	X		2
DT04-12PA-BE03	DT04-12PA-BE03	A	BLACK	X			X	X		2
DT04-12PA-BE04	DT04-12PA-BE04	B	BLACK		X		X	X		2
DT04-12PX-BE07	DT04-12PX-BE07	B	ALL		X		X		X	3
DT04-12PX-C015	DT04-12PX-C015	F	ALL		X					1
DT04-12PX-C017	DT04-12PX-C017	B	ALL			X		X		2
DT04-12PX-CE01	DT04-12PX-CE01	C	ALL		X			X		2
DT04-12PA-CE02	DT04-12PA-CE02	B	BLACK		X					1
DT04-12PA-CE03	DT04-12PA-CE03	B	BLACK		X			X		2
DT04-12PX-CE04	DT04-12PX-CE04	C	ALL		X				X	3
DT04-12PX-CE07	DT04-12PX-CE07	C	ALL		X		X	X		2
DT04-12PX-CE08	DT04-12PX-CE08	B	ALL		X		X			1
DT04-12PA-CE09	DT04-12PA-CE09	B	BLACK		X				X	3
DT04-12PA-CE26	DT04-12PA-CE26	A	BLACK			X		X		2
DT04-12PX-E003	DT04-12PX-E003	C	ALL	X				X		2
DT04-12PA-E004	DT04-12PA-E004	A	BLACK	X						1
DT04-12PA-E005	DT04-12PA-E005	A	BLACK	X				X		2
DT04-12PA-E008	DT04-12PA-E008	B	GRAY	X					X	3
DT04-12PX-EP04	DT04-12PX-EP04	D	ALL	X				X		2
DT04-12PA-EP20	DT04-12PA-EP20	B	GRAY	X			X		X	3
DT04-12PA-P004	DT04-12PA-P004	B	GRAY	X						1



ALT. VIEW FOR PARTS FROM NA

- 4 "E" IDENTIFIES E-SEAL, LOCATED APPROX. AS SHOWN.
- 3 MATERIAL: HOUSING: PA66 GF15, SEE TABLE FOR COLOR
SHORT, LONG CAP: PA66 GF15, BLACK
GROMMET: E-SEAL VMO (BURNT RED)
N-SEAL VMO (RED-ORANGE)
BLOCKED VMO (RED-ORANGE)
- 2. THIS RECEPTACLE MATES WITH DT06-12SX-XXXX PLUG (XXXX = ALL MODIFICATIONS)
- 1. SECONDARY WEDGE LOCK SOLD SEPARATELY: W12PX-XXXX. (X = A,B,C,D KEY, XXXX = ALL MODIFICATIONS)

- 6 MARKING FOR PARTS PRODUCED IN CHINA:
-XXXX IDENTIFIES THE MODIFICATION NUMBER, IF APPLICABLE. EXAMPLE: "E003" FOR DT04-12PA-E003, OR BLANK FOR DT04-12PA
-DATE CODE: IDENTIFIES THE YEAR, MONTH, DAY AND HOUR OF ASSEMBLY.
YEAR: FIRST AND SECOND DIGIT. (17 = 2017)
MONTH: THIRD DIGIT, EXCLUDING I. A = JAN, B = FEB, C = MARCH ... (K = OCTOBER)
DAY: FOURTH AND FIFTH DIGITS (14 = 14th DAY)
HOUR: SIXTH AND SEVENTH DIGITS (11 = 11AM)
-DIAL DATE CODE LOCATED ON HOUSING AND/OR CAP.
-CN LOCATED ON HOUSING AND/OR CAP.
- 5. FOR CONTACT AND WIRE PERFORMANCE AND APPLICATION CHARACTERISTICS SEE CUSTOMER DRAWING 0425-015-0000.

- 9 BLOCKED SEALS ARE NOT SYMMETRICAL ON BOTH SIDES. ALTHOUGH THEY APPEAR VISUALLY DIFFERENT, EFFECTIVE SEALING IS ACHIEVED ON EITHER SIDE.
- 8 FOR ALL ID MARKINGS SURROUNDING THE PART, ORIENTATION IS SHOWN FOR REFERENCE ONLY AND DOES NOT AFFECT FUNCTIONALITY, PROVIDED THE MARKINGS ARE IN THE CORRECT POSITION. SIZE AND LOCATION ARE APPROXIMATE, AS SHOWN.
- 7. MARKING FOR PARTS PRODUCED IN US:
-DATE CODE:
YEAR TO BE LAST NUMERICAL DIGIT, EX: 1 = 2021
MONTH USES SEQUENTIAL ALPHA CHARACTERS, EX: A = JANUARY
-DEUTSCH

NOTES: UNLESS OTHERWISE SPECIFIED

THIS DRAWING IS A CONTROLLED DOCUMENT.

DIMENSIONS: IN [mm]	TOLERANCES UNLESS OTHERWISE SPECIFIED: 0 PLC ± 2 PLC ± 3 PLC ±.025 (0.641) 4 PLC ± ANGLES 40°30'±	FINISH	OWN: A. POLO 22DEC2021 CHK: R. MESSENGER 22DEC2021 APVD: J. GRANICHAROVA 22DEC2021 PRODUCT SPEC 108-151009 APPLICATION SPEC 114-151009 WEIGHT	NAME: 12 WAY RECEPTACLE, STANDARD SEAL EXTRA THIN SEAL, SHORT AND LONG CAP, DT SERIES SIZE: 4FU8 CAGE CODE: DT04-12PX-XXXX RESTRICTED TO: -
------------------------	--	--------	--	--

CUSTOMER DRAWING SCALE: 5:2 SHEET 1 OF 3 REV B1

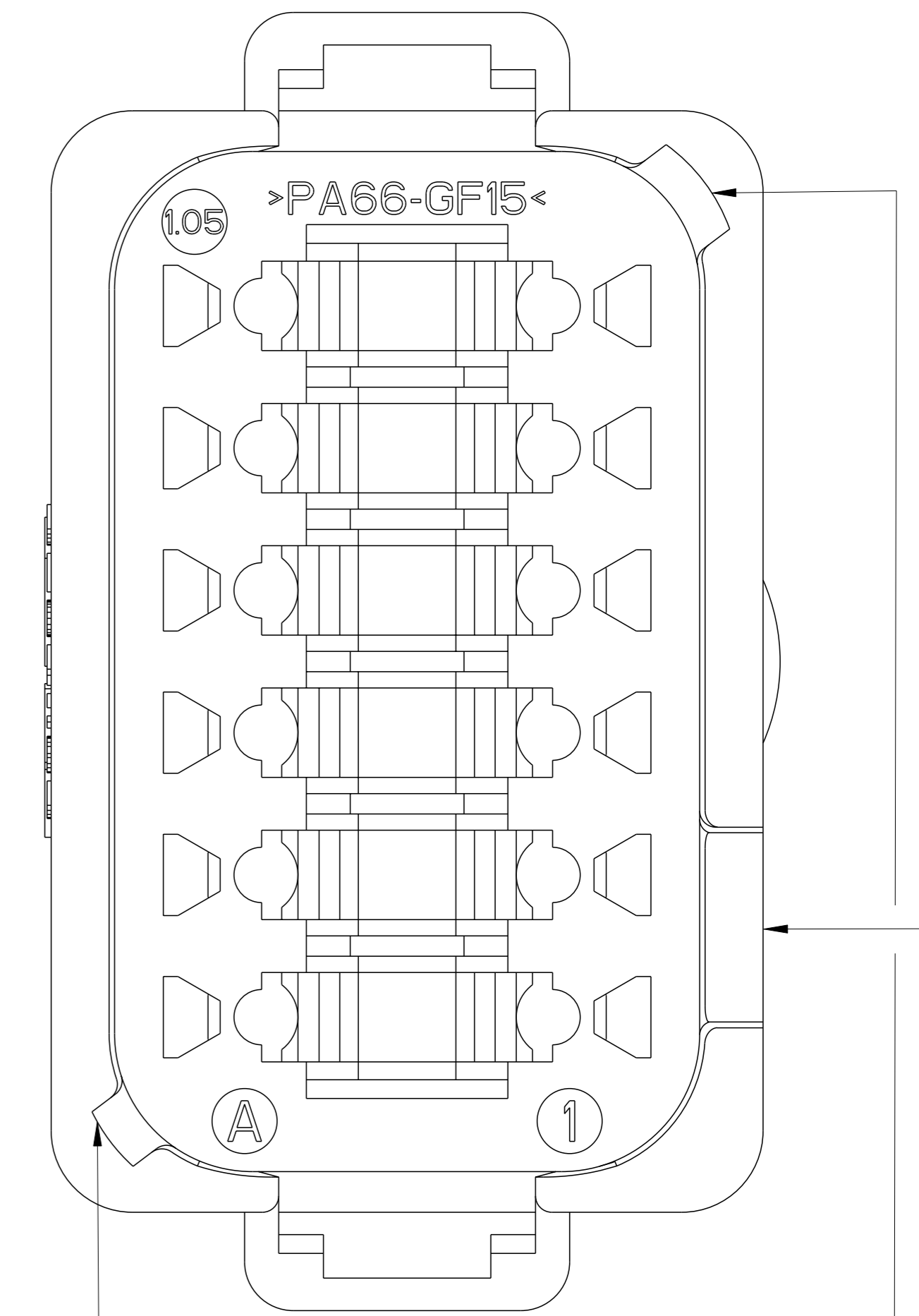
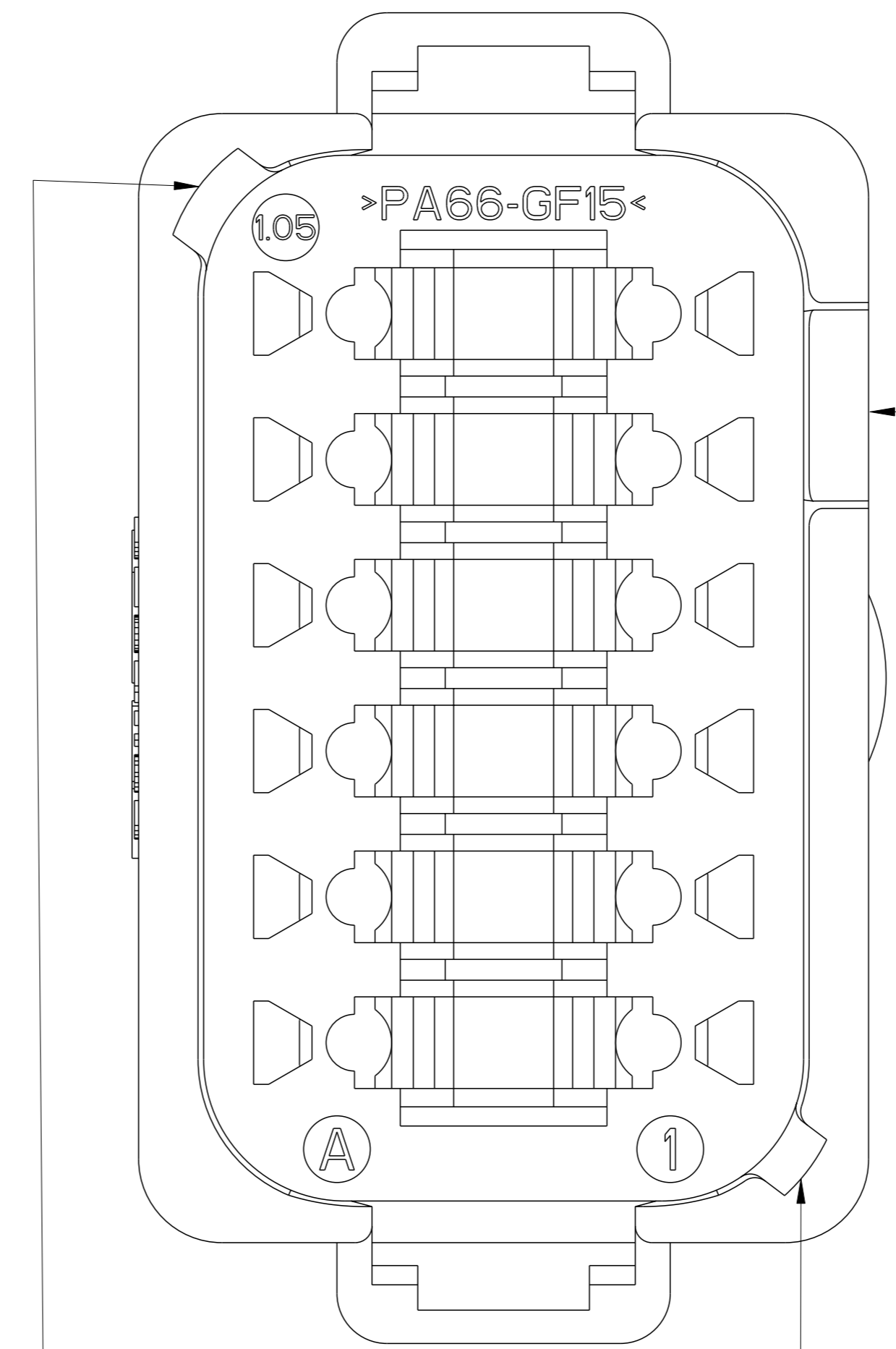
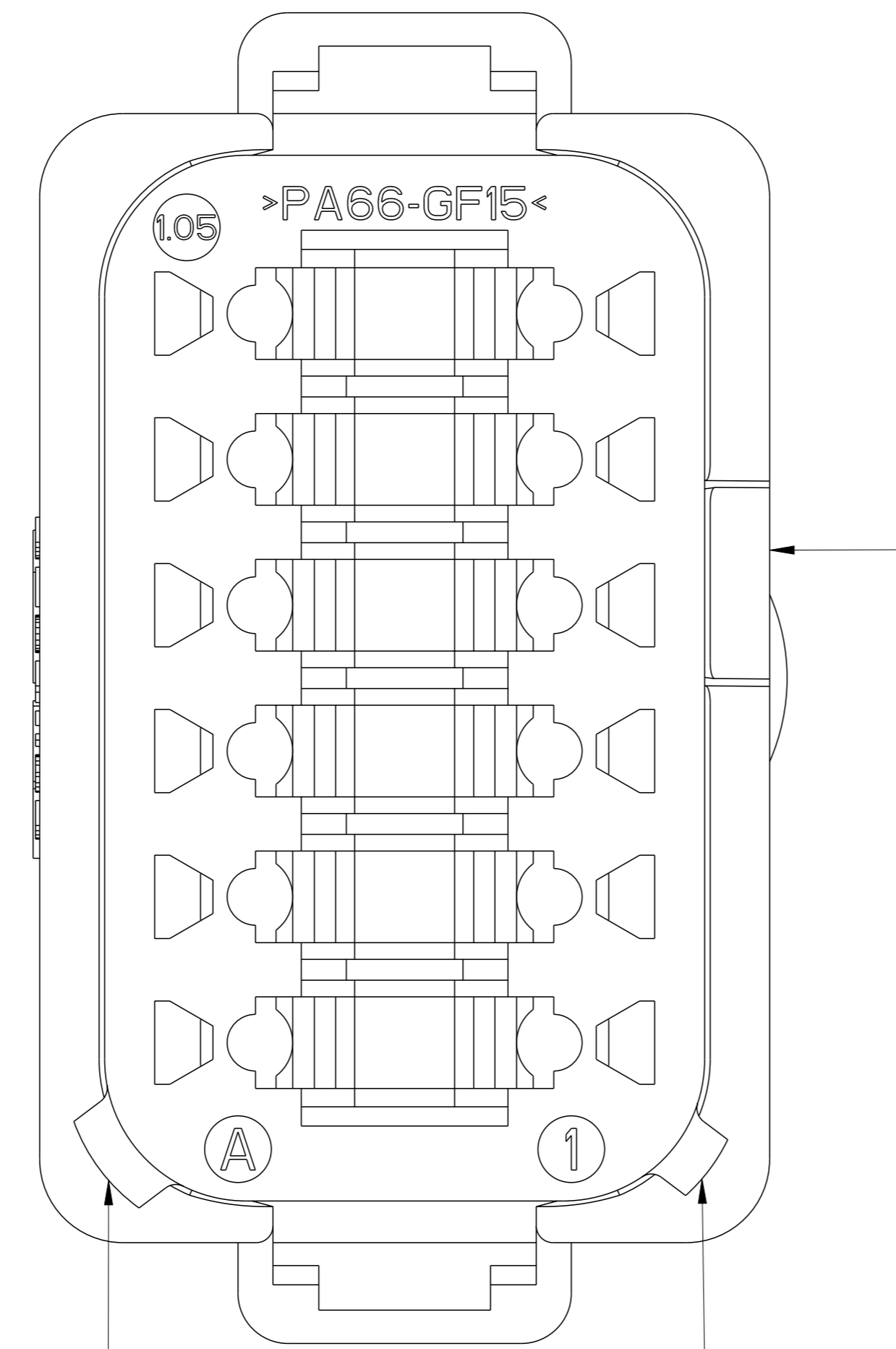
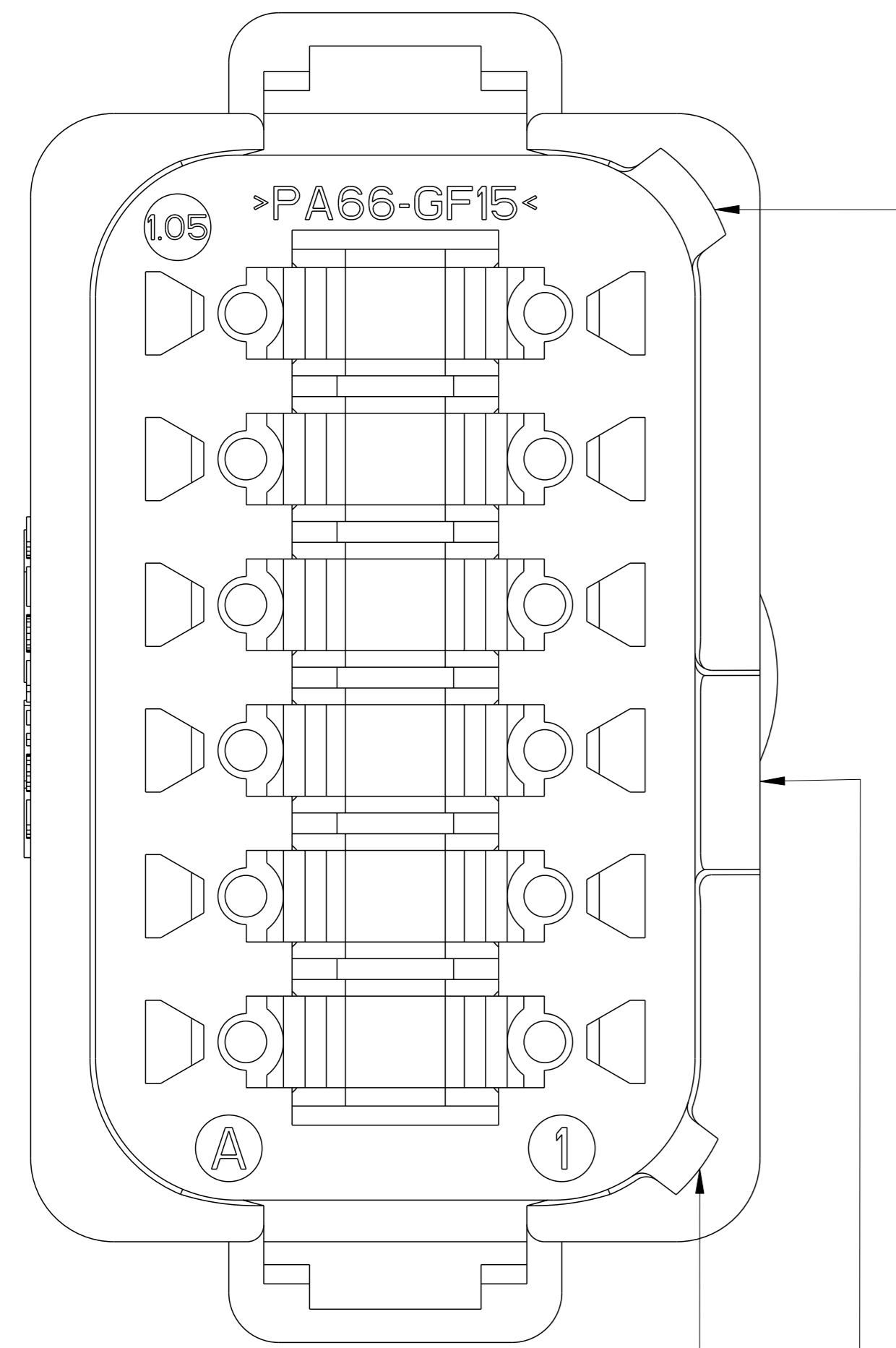
REVISIONS				
#	DATE	DESCRIPTION	DATE	APPV
-	-	SEE SHEET 1	-	-

DT04-12PA-XXXX
 KEY -A-
 HOUSING COLOR: GRAY
 SEE PN TABLE FOR BLACK PN

DT04-12PB-XXXX
 KEY -B-
 HOUSING COLOR: BLACK

DT04-12PC-XXXX
 KEY -C-
 HOUSING COLOR: GREEN

DT04-12PD-XXXX
 KEY -D-
 HOUSING COLOR: BROWN



KEY -A-

ADDITIONAL KEY -A-
ENHANCED KEY ONLY

KEY -B-

ADDITIONAL KEY -B-
ENHANCED KEY ONLY

KEY -C-

ADDITIONAL KEY -C-
ENHANCED KEY ONLY

KEY -D-

ADDITIONAL KEY -D-
ENHANCED KEY ONLY

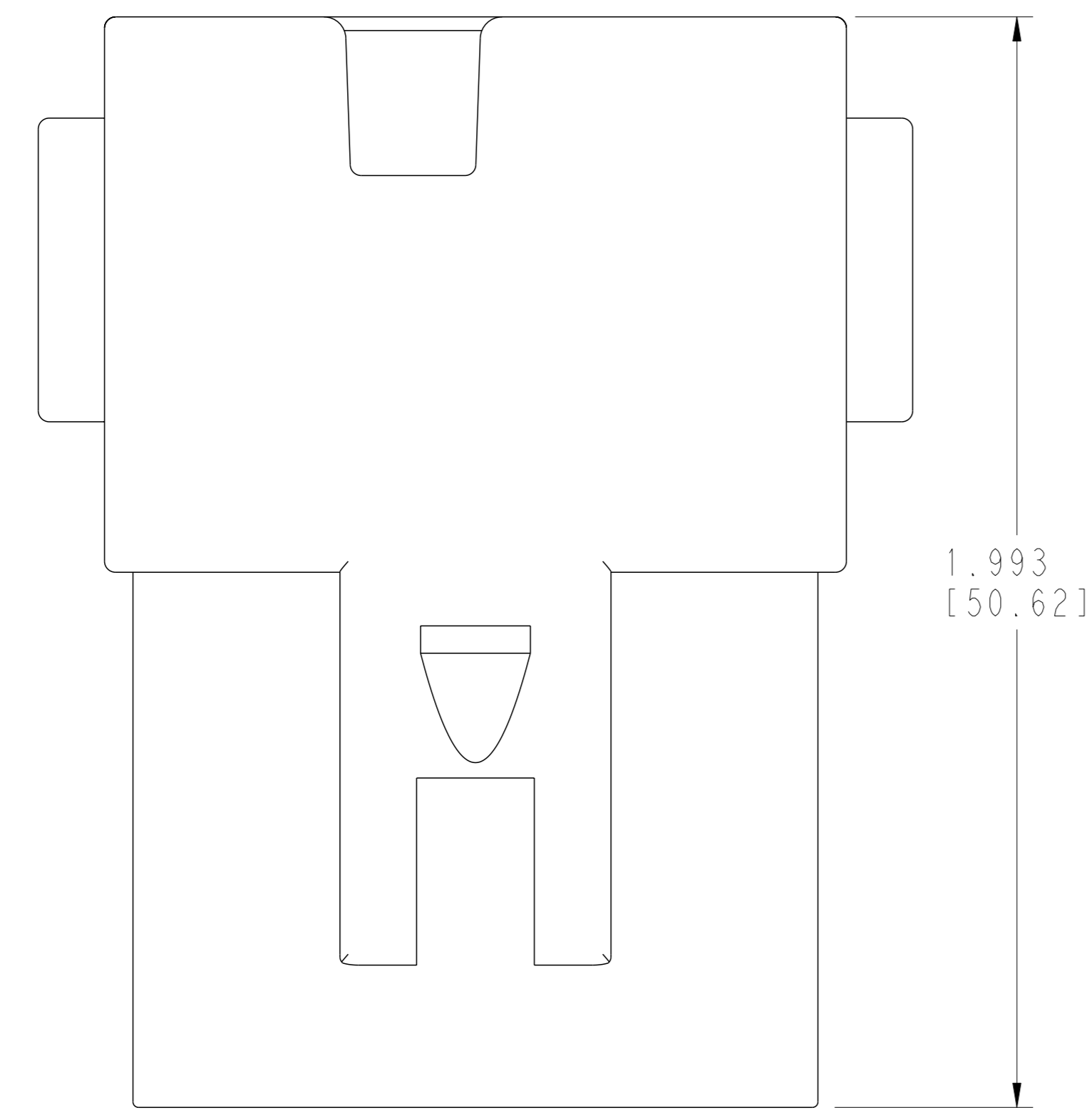
THIS DRAWING IS A CONTROLLED DOCUMENT.

DIMENSIONS: IN [mm]	TOLERANCES UNLESS OTHERWISE SPECIFIED: 0 PLC ± 1 PLC ± 2 PLC ± 3 PLC ±0.25 (0.64) 4 PLC ± ANGLES 40° 30' 0"	FINISH	OWN: A. POLO 22DEC2021 CHK: R. MESSENGER 22DEC2021 APPV: J. GRANICHAROVA 22DEC2021 PRODUCT SPEC: 108-151009 APPLICATION SPEC: 114-151009 WEIGHT	NAME: 12 WAY RECEPTACLE, STANDARD SEAL EXTRA THIN SEAL, SHORT AND LONG CAP, DT SERIES	RESTRICTED TO
MATERIAL: 3	SIZE: 4AFU8	CAGE CODE: DT04-12PX-XXXX	SCALE: 5:2	SHEET: 2 OF 3	REV: B1

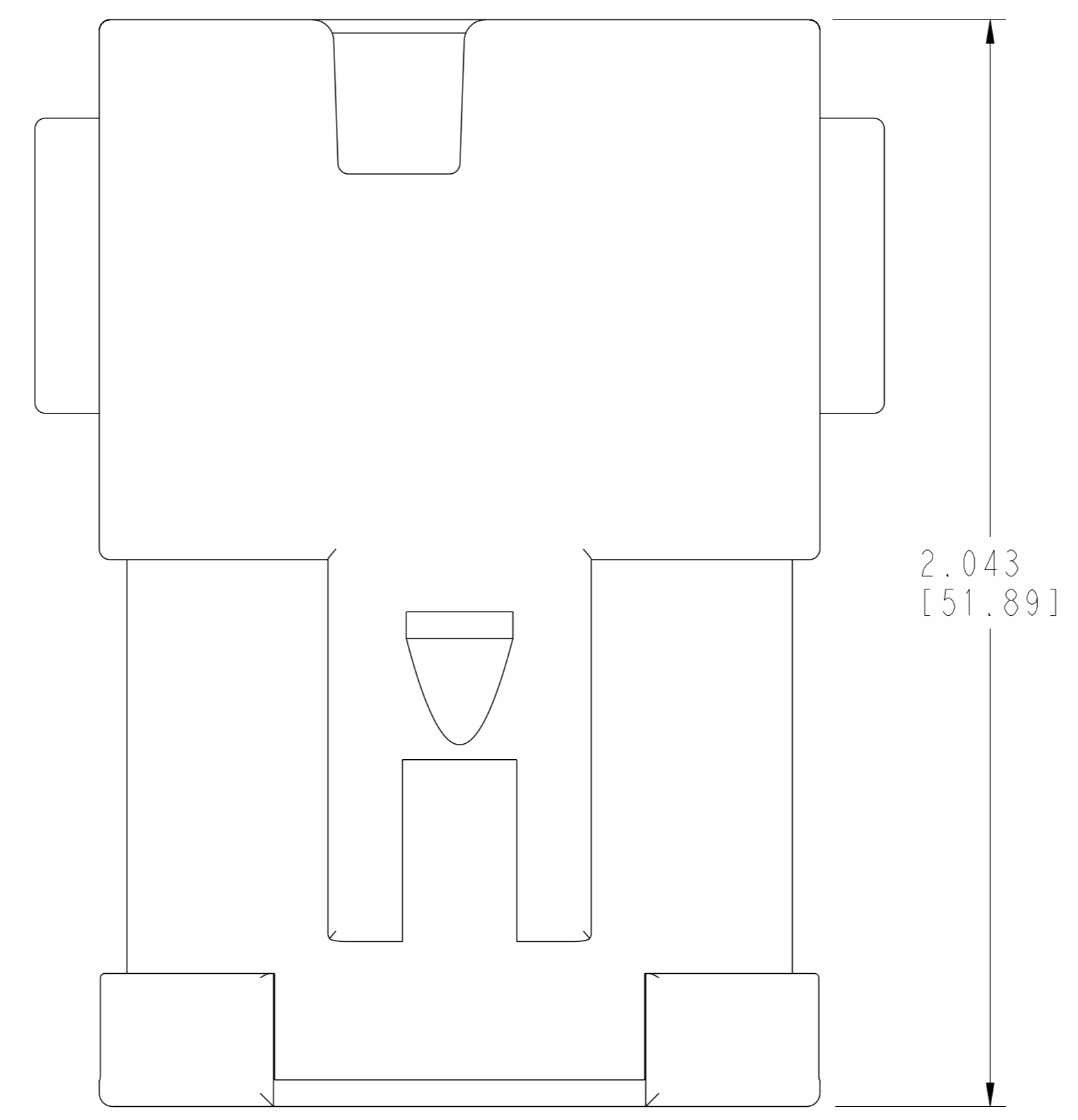
CUSTOMER DRAWING

REVISIONS				
#	LY#	DESCRIPTION	DATE	OWN
-		SEE SHEET 1	-	-

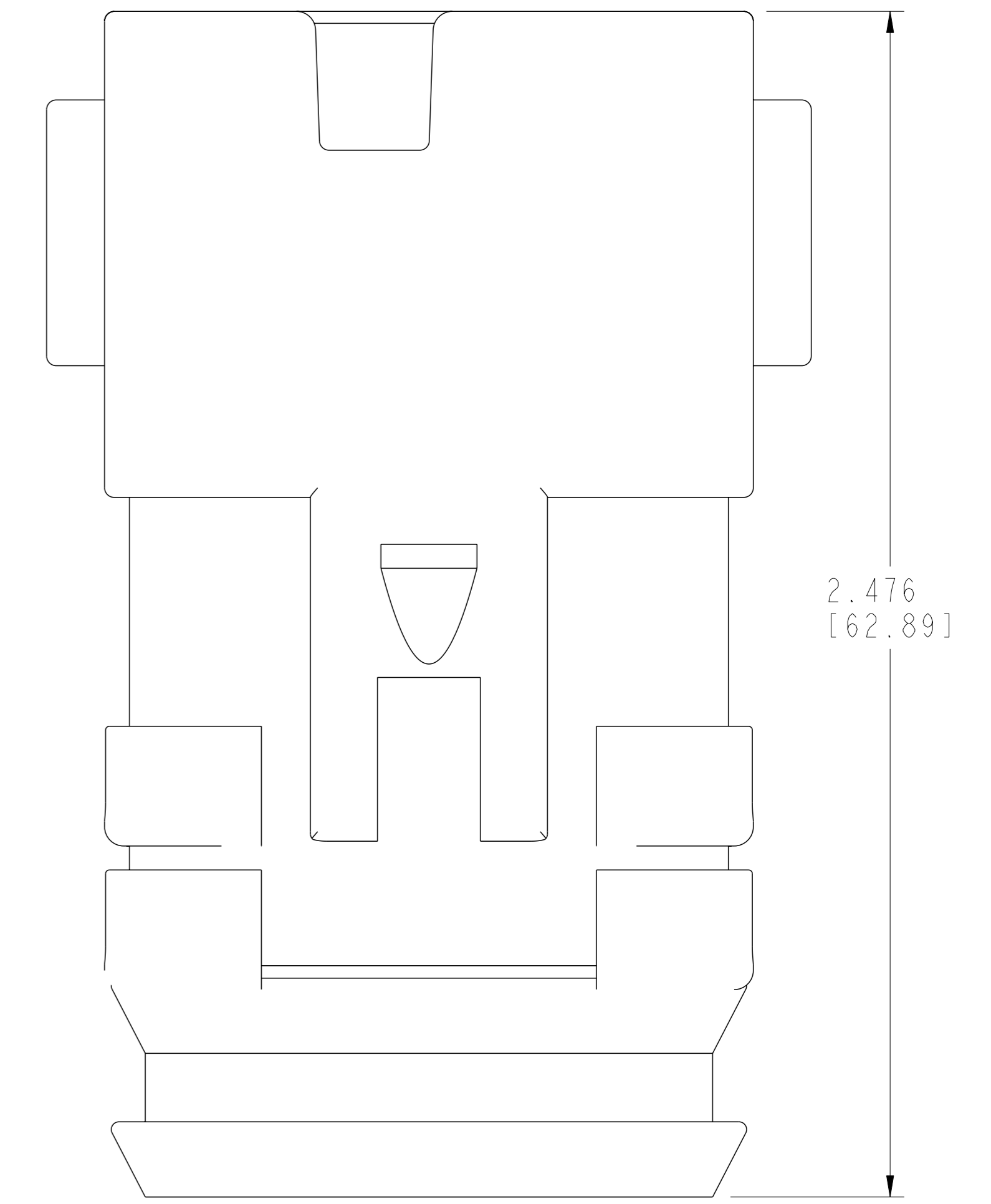
ENHANCED KEY A SHOWN FOR REFERENCE



**ENHANCED KEY
NO CAP
HOUSING COLOR: SEE TABLE**



**ENHANCED KEY
SHORT CAP
HOUSING COLOR: SEE TABLE
SHORT CAP COLOR: BLACK**



**ENHANCED KEY
LONG CAP
HOUSING COLOR: SEE TABLE
LONG CAP COLOR: BLACK**

THIS DRAWING IS A CONTROLLED DOCUMENT.		OWN: A. POLO 22DEC2021	
DIMENSIONS: IN [mm]		CHK: R. MESSENGER 22DEC2021	
TOLERANCES UNLESS OTHERWISE SPECIFIED:		APVD: J. GRANICHAROVA 22DEC2021	NAME: 12 WAY RECEPTACLE, STANDARD SEAL EXTRA THIN SEAL, SHORT AND LONG CAP, DT SERIES SIZE: CAGE CODE DRAWING NO. RESTRICTED TO A 4AFU8 ©=DT04-12PX-XXXX
0 PLC ±	1 PLC ±	PRODUCT SPEC: 108-151009	
2 PLC ±	3 PLC ±	APPLICATION SPEC: 114-151009	SCALE: 5:2 SHEET 3 OF 3 REV: B1
4 PLC ±	ANGLES: 40° 30' 0"	WEIGHT:	CUSTOMER DRAWING
FINISH:			