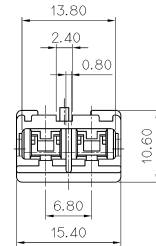
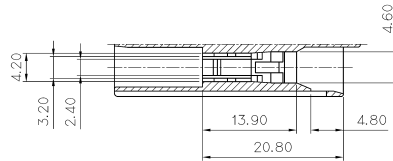
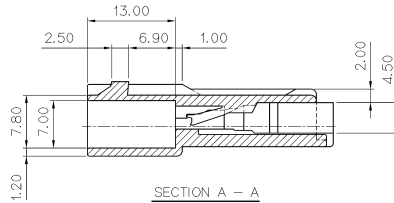
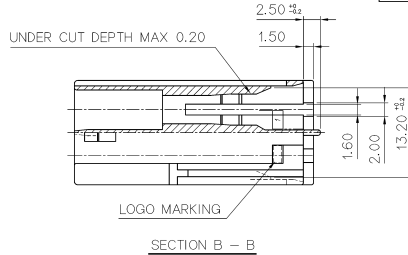
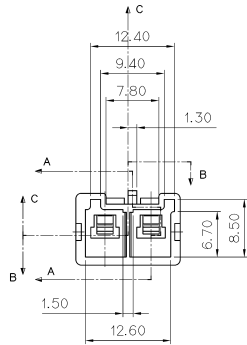


GENERAL TOLERANCE (HOUSING)							USED ON
1MAX	5MAX	10MAX	20MAX	45MAX	ANGLE	ECCENT	MG611251
±0.10	±0.15	±0.20	±0.25	±0.30	±30'	0.10	MG631253



NOTE

1. 제품기능상 유해한 변형, BURR, WELD LINE 등이 없을것.
2. 적용 TERMINAL : ST740700 (7114-1230)
ST740701 (7114-1231)
3. 상대HOUSING : MG611251 (7123-1923-30)
4. LOGO, CAVITY NO ; 기울기 15°, 크기0.8 높이0.2 일것.



ISSUE MARK

				MATERIAL		NYLON66		KOREA ELECTRIC TERMINAL CO., LTD.	
				FINISH		BLACK			
				WIRE RANGE				CLASS	
				INSULATION				TYPE	
				SCALE		2/1		PART NO	
LTR		REVISION RECORD		DR		CHK		DATE	
DR		K J KIM 98.1.8		CHK		R		1/10	
CHK		S. I. Y. 1/10		APP		W. H. 1/10		PART NAME	
								T - 2P REC. HOUSING	